



SHP SUMMER CLASSIC

JULY 22 - 26, 2026

USEF National Hunters * Level 4 Jumpers
PCHA, CPAH & NorCal "A" Rated

- \$35,000 Grand Prix
- \$15,000 Welcome Prix 1.40m
- \$10,000 Open Jumper Classic 1.35m
- \$10,000 USHJA National Derby Open
- \$5,000 USHJA National Derby Jr/Am

GIANT STEPS CHARITY CLASSIC

JULY 29 - AUG 2, 2026

USEF National Hunters * Level 4 Jumpers
PCHA, CPAH & NorCal "A" Rated

World Champion Hunter Rider Event



- \$60,000 Grand Prix
- \$24,500 Welcome Prix 1.40m
- \$10,000 Open Jumper Classic 1.35m
- \$5,000 Open Jumper Speed 1.30m
- \$5,000 USHJA National Derby Open
- \$5,000 USHJA National Derby Jr/Am
- \$10,000 USHJA International Derby



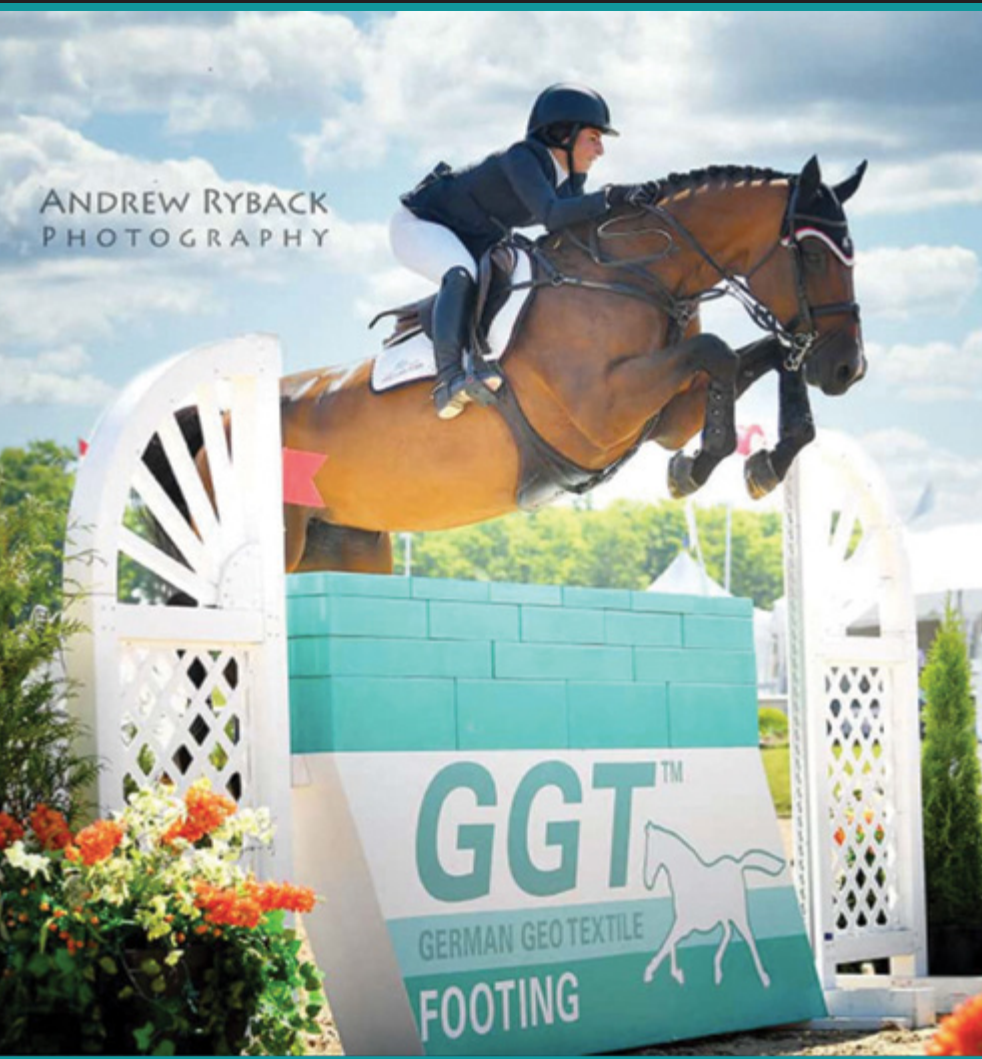
SHP SUMMER CLASSIC
JULY 22 - 26

GIANT STEPS CHARITY CLASSIC
JULY 29 - AUG 2 | WCHR

SHP FALL CLASSIC I
SEPT 2 - 6

SHP FALL CLASSIC II
SEPT 9 - 13

ARENA FOOTING ARENA GROOMERS ARENA MATTING SYSTEMS



PROUD SPONSOR
OF THE
WEST PALMS
EVENT
MANAGEMENT

GGT FOOTING
IS OUR NAME
AND LEADING
THE WORLD IN
ARENA TEXTILES
IS OUR GAME

Follow Us Online



Get Your Arena Solution • Call: Cynthia Brewster Keating
(864) 804.0011 • www.ggtfooting.com



GENERAL INFORMATION

SHOW INFORMATION & FORMS

Enter online at showgroundslive.com/shp

All entries must be submitted online via showgroundslive.com/shp. Download show schedules, class lists, equine health declaration forms, VIP information, RV applications, sponsor and show updates at sonomahorsepark.com

Please note; RV space is limited. RV applications are accepted in the order received. Please complete online reservations form at sonomahorsepark.com For more information, contact Angelica: angelica@westpalmsevents.com

ENTRY DEADLINE

Enter online at showgroundslive.com/shp. Entries close:

MONDAY, June 29, 2026

SHP OFFICIALS

Competition Manager	Caroline Jones	403.333.8692	caroline@westpalmsevents.com
Assistant Manager	Dale Harvey	714.785.9467	dale@westpalmsevents.com
Show Secretary	Lyn Nelson	717.870.3085	lyn@sonomahorsepark.com
Photographer	GrandPix	760.289.2823	grandpixphoto.com
Veterinarian	Dr. Russ Sakai	707.684.6905	Petaluma Equine
Farrier	Jose Ortizharo	760.497.3534	
Medic	Brad Beedle	415.309.7447	
Operations Manager	Brian Wallace	818.912.0720	

SHP PHYSICAL ADDRESS & MAILING ADDRESS

7600 Lakeville Hwy, Petaluma, CA 94954
Attn: Horse Show Office/Exhibitor Name



SHP SUMMER CLASSIC
JULY 22 - 26, 2026

GIANT STEPS CHARITY CLASSIC
JULY 29 - AUG 2, 2026

OFFICIALS

SONOMA SUMMER CLASSIC

JUDGES

Davin Malmqvist
Jumpers

Sheryl Sutherby
Jumpers/Equitation

Lauren Schweppe
Hunters / Equitation

Dee Walker
Hunters/Equitation

Kris Cheyne
Hunters/ Equitation

Joe Heidgen
Hunters/ Equitation

COURSE DESIGNERS

Bernardo Costa Cabral
Jumpers

Robert Barton
Hunters/Jumpers/Equitation

Michael Roy Curtis
Hunters/Jumpers/Equitation

STEWARDS

Kelly Covey
Celia Thomas
Kathy Meadows

GIANT STEPS CHARITY CLASSIC

JUDGES

Davin Malmqvist
Jumpers

TBA
Jumpers/Equitation

Jamie Stryker
Hunters/Equitation

Sheryl Sutherby
Hunters/Equitation

Andrea Wells
Hunters/Equitation

John Colon
Hunters/Equitation

COURSE DESIGNERS

Manuel Esparza
Jumpers

Lynn Mullins
Hunters/Jumpers/Equitation

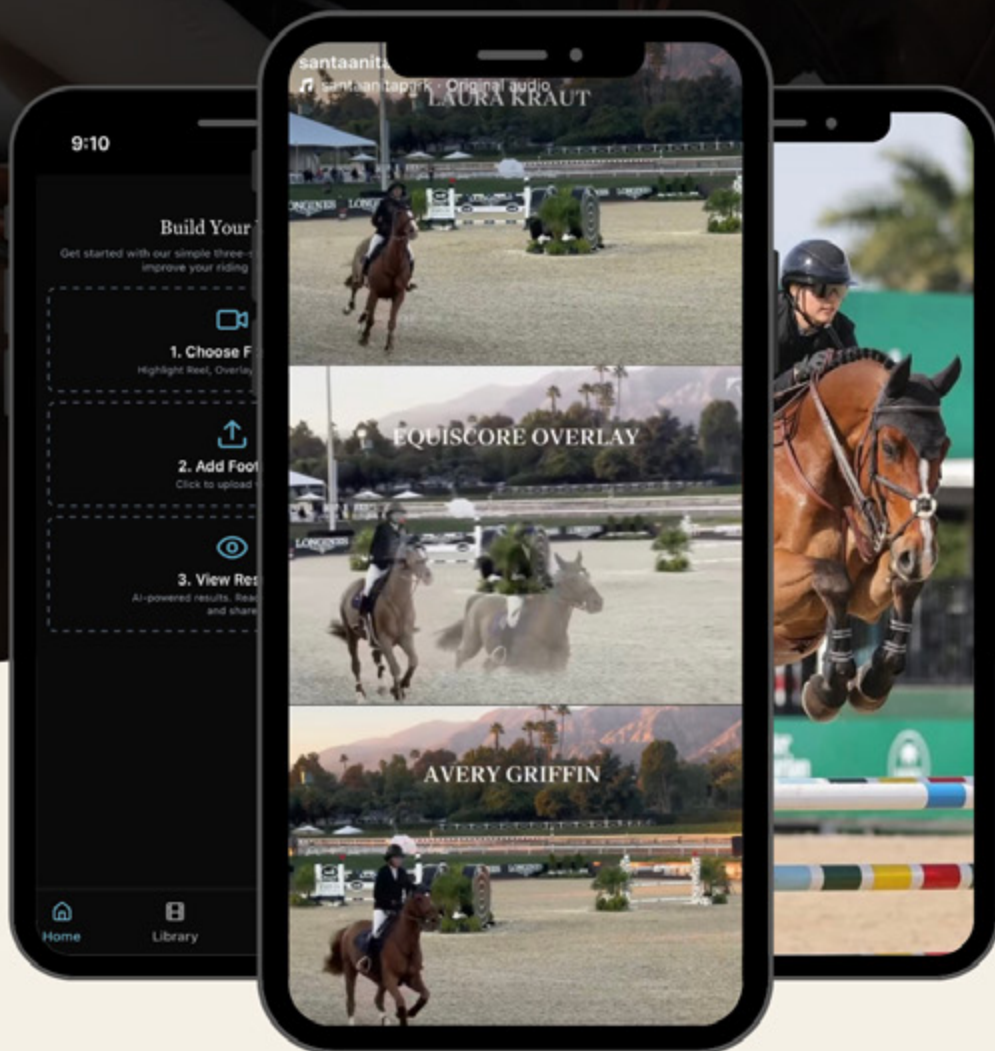
Hailey Rogge
Hunters/Equitation

STEWARDS

Kelly Covey
Celia Thomas
Kathy Meadows



CREATE HIGHLIGHT REELS, OVERLAYS, AND SIDE BY SIDES ALL IN EQUISCORE'S APP



[APP.EQUISCORE.IO](https://app.equiscore.io)





EventPass

Powered By EquiTrace®



New for 2026 at West Palms Events Upload Your Health Papers

EventPass is now used for all horse health documentation. Here's how to get started.

1

Download the App

Create your Free Account

2

Add Your Horses

Add by USEF ID Look Up.

3

Upload Your Health Documents

EventPass rapidly verifies your documents

4

Create Your EventPass

Select the horses you want to compete

5

Scan your pass on Arrival

For a quick & seamless entry to the show.

Need Support? Call our support team on +1 (352) 759 1220
Mon, Thurs - Sun: 9am - 5pm EST
Tue & Wed: 7am - 5pm EST



Scan to Download

JUMPERS

SHP SUMMER CLASSIC
JULY 22 - 26, 2026

GIANT STEPS CHARITY CLASSIC
JULY 29 - AUG 2, 2026

In all jumper classes, ties involving first place will be jumped off. Ties not involving first place will be broken by the fastest time. Orders will be drawn per USEF JP112. Table II, 2(c) classes - power phase to be timed.
* Indicates bonus point class. Riders must ride for awards in Grand Prix and Classics to be awarded the prize money. Horses do not need to show in a class to qualify to show in Open Jumper Classics. See Rule 34. Formal attire required in Grand Prix, Classics and Special Classes. USEF JP111.9



Please visit ryegate.com/uset.php
Upcoming Classes to determine
which classes will be included in
the Rolex Computer Ranking List

JUMPER CLASSICS

	CLASSIC NUMBER	CLASSIC ENTRY FEE	PRIZE MONEY
\$35,000 GRAND PRIX 1.45M (Week 1) **Northern Series American Standard. Prize money awarded to twelfth: 30%, 22%, 13%, 9%, 6%, 5%, 4%, 3%, 2%, 2%, 2%, 2%	1	\$675	\$35,000
\$60,000 GRAND PRIX 1.45M (Week 2) **Northern Series National Standard. Prize money awarded to twelfth: 30%, 22%, 13%, 9%, 6%, 5%, 4%, 3%, 2%, 2%, 2%, 2%	1	\$850	\$60,000
\$15,000 WELCOME PRIX 1.40M (Week 1)	2	\$475	\$15,000
\$24,500 WELCOME PRIX 1.40M (Week 2)	2	\$550	\$24,500
\$10,000 OPEN JUMPER CLASSIC 1.35M	3	\$425	\$10,000
\$5,000 OPEN JUMPER SPEED 1.30M**Northern Series	803	\$325	\$5,000
\$5,000 OPEN JUMPER CLASSIC 1.20M **Northern Series	802	\$325	\$5,000
\$4,000 JUNIOR/AMATEUR JUMPER CLASSIC 1.30M	6	\$300	\$4,000
\$3,000 JUNIOR/AMATEUR JUMPER CLASSIC 1.20M	7	\$250	\$3,000
\$1,500 JUNIOR/AMATEUR JUMPER CLASSIC 1.10M **Northern Series	801	\$175	\$1,500
\$1,000 JUNIOR/AMATEUR JUMPER CLASSIC 1.00M **Northern Series	800	\$125	\$1,000

JUMPER CLASSES

	CLASS NUMBER	ENTRY FEE	PRIZE \$/ADD BACK
OPEN JUMPERS			
1.40m Jumpers	23	\$75	\$250/\$15
1.30m Jumpers	26, 27, 28*	\$70	\$200/\$15
1.20m Jumpers	29, 30, 31*	\$70	\$200/\$15
1.10m Jumpers	40, 41, 42*	\$65	
1.00m Jumpers	47, 48, 49*	\$65	
.95m Jumpers	59, 60	\$65	
.90m Jumpers	50, 51, 52*	\$65	
.80m Jumpers	54, 55, 56* 57, 58	\$65	
YOUNG JUMPERS			
Young Jumpers must be USEF Age Verified at closing date of entries. See USEF JP 117 for Young Jumper Rules/Specs.			
0.90m Young Jumper (4-7 Years Old)	901, 902	FREE	
1.00m Young Jumper (4 - 7 Years Old)	903, 904	FREE	
1.10m Young Jumper (4 - 7 Years Old)	905, 906	FREE	
1.20m Young Jumper (5 - 7 Years Old)	907, 908	FREE	
1.30m Young Jumper (6 - 7 Years Old)	909, 910	FREE	

JUMPER CLASSES

	CLASS NUMBER	ENTRY FEE	PRIZE MONEY
JUNIOR/AMATEUR JUMPERS			
1.40m Junior/Amateur	100, 101, 102*	\$70	\$200
1.30m Junior/Amateur	103, 104, 105*	\$70	\$200
1.20m Junior/Amateur	106, 107, 108*	\$70	\$200
Riders may not cross enter into jumper classes exceeding 1.25m.			
1.10m Junior	120, 121, 122*	\$70	
1.10m Amateur	123, 124, 125*	\$70	
Riders may not cross enter into jumper classes exceeding 1.15m.			
1.00m Junior	130, 131, 132*	\$65	
1.00m Amateur	133, 134, 135*	\$65	
Riders may not cross enter into jumper classes exceeding 1.00m.			
.95m Junior	140, 141, 142*	\$65	
.95m Amateur	143, 144, 145*	\$65	
.85m Junior	150, 151, 152*	\$65	
.85m Amateur	153, 154, 155*	\$65	
.80m Junior/Amateur	160, 161, 162*	\$65	
.70m Junior/Amateur	163, 164, 165*	\$65	

HUNTERS

SHP SUMMER CLASSIC
JULY 22 - 26, 2026

GIANT STEPS CHARITY CLASSIC
JULY 29 - AUG 2, 2026

Hunter sections will be judged on performance and soundness. Manners shall be emphasized and extreme speed penalized in all Junior and Pony Classes. In the Children's, Adult Amateur and non-rated hunter sections, horses will not be judged for soundness. Management reserves the right to combine or cancel any divisions with insufficient entries. Please be aware that the courtesy circle may be restricted. Please check course diagram. All Hunter classes will be scored on the open numerical system. Classics - See rule 35.

HUNTER CLASSICS

	SHOW	CLASSIC NUMBER	CLASSIC ENTRY FEE	PRIZE MONEY
\$10,000 USHJA INTERNATIONAL HUNTER DERBY 3'6 - 3'9 *	Giant Steps Show Only	12	\$450	\$10,000
\$10,000 USHJA NATIONAL HUNTER DERBY OPEN 3' **Northern Series	SHP Summer Only	13	\$375	\$5,000
\$5,000 USHJA NATIONAL HUNTER DERBY OPEN 3' **Northern Series	Giant Steps Show Only	13	\$375	\$5,000
\$5,000 USHJA NATIONAL HUNTER DERBY JR/AM 3' **	SHP Summer I: Hunt & Go, 1 Round Only. Giant Steps Charity Show: 2 rounds/or Hunt & Go	14	\$375	\$5,000
\$1,500 JUNIOR/AMATEUR OWNER HUNTER CLASSIC 3'3 - 3'6		15	\$150	\$1,500
\$1,000 ADULT AMATEUR HUNTER CLASSIC 3'		16	\$100	\$1,000
\$1,000 CHILDREN'S HUNTER CLASSIC 3'		17	\$100	\$1,000
\$500 PONY HUNTER CLASSIC 2'3 - 2'9		18	\$75	\$500
\$500 MODIFIED CHILD/ADULT HUNT & GO DERBY 2'9		19	\$75	\$500
\$1,500 LOW CHILD/ADULT HUNT & GO DERBY 2'6**Northern Series		20	\$175	\$1,500
\$500 CHILDREN'S PONY HUNTER CLASSIC		545	\$75	\$500
GIANT STEPS TEAM CHALLENGE (Specs on Page 16)		901	-	-

USHJA WORLD CHAMPIONSHIP HUNTER RIDER PROGRAM

The USHJA World Championship Hunter Rider Program was founded in 1995 to recognize and celebrate the hunter rider. Since the inaugural World Championship Hunter Rider Professional Finals in 1995, the WCHR program has expanded to include coveted year-end awards for Professionals, Developing Professionals, Amateur Owners, Amateur Adults, Juniors, Children's & Pony riders.



USHJA HUNTER DERBIES

See ushja.org for specifications

HUNTER CLASSES

	CLASS NUMBER	DIVISION ENTRY FEE	CLASS ENTRY FEE	OVER FENCES PRIZE MONEY
RATED HUNTERS				
	* HandyClass			
High Performance Hunters 3'9	200, 201, 202, 203*, 204	\$330	\$75	\$200
Green Hunters 3'9	210, 211, 212, 213*, 214	\$330	Division Only	\$200
Green Hunters 3'6	220, 221, 222, 223*, 224	\$330	Division Only	\$200
High Performance Conformation Hunters 3'9	230, 231, 232, 233*, 234	\$330	Division Only	\$200
High Performance Conformation Model	235		\$30	
Green Conformation Hunters 3'6	240, 241, 242, 243*, 244	\$330	Division Only	\$200
Green Conformation Model	245		\$30	
Performance Hunters 3'6	250, 251, 252, 253*, 254		\$65	\$125
Performance Hunters 3'3	260, 261, 262, 263*, 264		\$65	\$125
Green Hunters 3'3	270, 271, 272, 273, 274	\$315	Division Only	\$150
Green Hunters 3'	280, 281, 282, 283, 284	\$315	Division Only	\$150
USHJA Hunters 3'	320, 321, 322, 323, 324		\$60	
USHJA Hunters 2'9	330, 331, 332, 333, 334		\$60	
USHJA Hunters 2'6	340, 341, 342, 343, 344		\$60	
USHJA Hunters 2'3	350, 351, 352, 353, 354		\$60	
USHJA Hunters 2'	360, 361, 362, 363, 364		\$60	
SHP Hunters 3'	290, 291, 292, 293, 294		\$60	
SHP Hunters 2'6	325, 326, 327, 328, 329		\$60	
Warm-Up Hunters - See schedule for heights	365 - 379		\$60	
Young Hunter 7 & Under 3'3*	950, 951, 952, 953, 954	FREE	FREE	
Young Hunter 6 & Under 3'*	960, 961, 962, 963, 964	FREE	FREE	
Young Hunter 5 & Under 2'9*	970, 971, 972, 973, 974	FREE	FREE	

*Young Hunters must be USEF Age Verified at closing date of entries to be eligible. Young Hunter entries are limited to (5) complimentary classes per horse.

HUNTERS

SHP SUMMER CLASSIC
JULY 22 - 26, 2026

GIANT STEPS CHARITY CLASSIC
JULY 29 - AUG 2, 2026

HUNTER CLASSES

	CLASS NUMBER	DIVISION ENTRY FEE	CLASS ENTRY FEE	OVER FENCES PRIZE MONEY
AMATEUR OWNER HUNTERS				
	<i>* HandyClass</i>			
Amateur Owner Hunters 18 - 35 3'6	380, 381, 382, 383*, 384	\$325	Division Only	\$175
Amateur Owner Hunters 36 & Over 3'6	385, 386, 387, 388*, 389	\$325	Division Only	\$175
Horse or Rider may not cross enter into Adult Amateur Hunters. Horse may not cross enter into Amateur Owner 3'3.				
Amateur Owner Hunters 18 - 35 3'3	390, 391, 392, 393*, 394	\$325	Division Only	\$175
Amateur Owner Hunters 36 & Over 3'3	395, 396, 397, 398*, 399	\$325	Division Only	\$175
JUNIOR HUNTERS				
Small Junior Hunters 17 & Under 3'6	400, 401, 402, 403*, 404	\$325	Division Only	\$175
Large Junior Hunters 17 & Under 3'6	410, 411, 412, 413*, 414	\$325	Division Only	\$175
Small Junior Hunters 17 & Under 3'3	420, 421, 422, 423*, 424	\$325	Division Only	\$175
Large Junior Hunters 17 & Under 3'3	430, 431, 432, 433*, 434	\$325	Division Only	\$175
Horse may not cross enter between Junior Hunters 3'3 and Junior Hunters 3'6 at the same show.				
ADULT AMATEUR HUNTERS				
Adult Amateur Hunters 18 - 35 3'	450, 451, 452, 453, 454		\$65	
Adult Amateur Hunters 36 & Over 3'	460, 461, 462, 463, 464		\$65	
Horse or Rider may not cross enter into any Amateur Owner Hunter 3'6 class at the same show. See Zone 10 Specs				
CHILDREN'S HUNTERS				
Children's Hunters 13 & Under 3'	470, 471, 472, 473, 474		\$65	
Children's Hunters 14 - 17 3'	480, 481, 482, 483, 484		\$65	
Horse or Rider may not cross enter into any Junior Hunter class at the same show. See Zone 10 Specs				
MODIFIED CHILDREN'S/ADULT AMATEUR HUNTERS				
Modified Children's Hunters 2'9	490, 491, 492, 493, 494		\$65	
Modified Adult Amateur Hunters 2'9	500, 501, 502, 503, 504		\$65	
LOW CHILDREN'S/ADULT AMATEUR HUNTERS				
Low Children's Hunters 2'6	510, 511, 512, 513, 514		\$65	
Low Adult Amateur Hunters 2'6	520, 521, 522, 523, 524		\$65	
PONY HUNTERS				
Small Pony Hunters 2'3	530, 531, 532, 533*, 534	\$300	Division Only	\$125
Medium Pony Hunters 2'6	540, 541, 542, 543*, 544	\$300	Division Only	\$125
Large Pony Hunters 2'9	550, 551, 552, 553*, 554	\$300	Division Only	\$125
Sm/Med Green Pony Hunters 2'3 & 2'6	560, 561, 562, 563, 564	\$285	Division Only	\$75
Large Green Pony Hunters 2'9	570, 571, 572, 573, 574	\$285	Division Only	\$75
CHILDREN'S PONY HUNTERS				
Sm/Med Children's Pony Hunters 2'	580, 581, 582, 583, 584		\$65	
Large Children's Pony Hunters 2'6	590, 591, 592, 593, 594		\$65	

Fences must be set at 2' for Small/Medium Ponies and 2'6 for Large Ponies. Spreads may not exceed fence height. Riders may not cross enter in any divisions where fences exceed 3'3 (except Children's Jumpers).



WCHR

WORLD CHAMPIONSHIP HUNTER RIDER

Welcome to the 2026
World Championship Hunter Rider Series!

Be part of the fun in 2026!

NEW FOR 2026!
East Coast Spectacular
January 27-February 1, 2026
World Equestrian Center Ocala



Scan the code to see the full calendar of
2026 WCHR Events.



Peter Wetherill Palm Beach Spectacular
February 11-16, 2026



SPORTPHOTO, MEGAN GIESE MEDIA, HIGH
DESERT SPORT PHOTO, SHAWN MCMILLEN
PHOTOGRAPHY, ANDREW RYBACK



West Coast Spectacular
March 10-15, 2026



Central Spectacular
July 8-12, 2026



Capital Challenge
September 23-October 4, 2026

EQUITATION & MEDALS

SHP SUMMER CLASSIC JULY 22 - 26, 2026

GIANT STEPS CHARITY CLASSIC JULY 29 - AUG 2, 2026

MEDAL CLASSES

	CLASS NUMBER	CLASS ENTRY FEE
SEE USEF & PCHA RULE BOOK FOR SPECIFICATIONS MUST BE A MEMBER IN GOOD STANDING		
RIDER MUST BE USEF MEMBER		
Dover Saddlery/USEF Hunter Seat Medal 17 & Under 3'6 *USEF \$15 surcharge	700	\$80
USEF Adult Equitation 18 & Over 3'3 *USEF \$15 surcharge	701	\$80
Marshall+Sterling/USEF Pony Medal 17 & Under 2'3, 2'6, 2'9 *USEF \$15 surcharge	702	\$80
Platinum Performance/USEF Talent Search 2* 21 & Under *USEF \$15 surcharge	703	\$80
Washington International Jumper Phase 17 & Under 3'6	704	\$65
Washington International Hunter Phase 17 & Under 3'6	705	\$65
Taylor Harris National Children's Medal 17 & Under 3'	706	\$65
Ariat National Adult Medal 18 & Over 3'	708	\$65
Marshall+Sterling/USHJA 3'3 Jumping Seat Medal 17 & Under *USHJA \$10 surcharge	709	\$75
Marshall+Sterling/USHJA 3'3 Jumping Seat Medal 18 & Over *USHJA \$10 surcharge	710	\$75
IHSA/USHJA 3'3 Hunter Seat Medal 17 & Under *USHJA \$10 surcharge	741	\$75
USEF/NCEA Junior Hunter Seat Medal 17 & Under 3'3 *USEF \$15 surcharge	711	\$80
RIDER MUST BE USEF & NHS MEMBER TRAINER MUST BE NHS MEMBER		
Taylor Harris National Adult Medal 18 & Over 3'	707	\$65
ASPCA/NHSAA Maclay Medal 17 & Under 3'6	712	\$65
Hamel Foundation National Horse Show 17 & Under 3'3	713	\$65
RIDER & TRAINER MUST BE PCHA MEMBERS		
PCHA Adult Horsemanship 35 & Over 3'3	714	\$65
PCHA Adult Horsemanship 18 - 34 3'3	715	\$65
PCHA Horsemanship 14 & Under 3'3	716	\$65
PCHA Horsemanship Jr/Am Medal 2'9	717	\$65
Onondarka 12 & Under 3'	719	\$65

EQUITATION CLASSES

	CLASS NUMBER	CLASS ENTRY FEE
JUNIOR EQUITATION		
14 & Under Flat	610	\$65
14 & Under Over Fences 3'	611, 612	\$65
15 - 17 Flat	630	\$65
15 - 17 Over Fences 3'	631, 632	\$65
AMATEUR EQUITATION		
18 - 35 Flat	640	\$65
18 - 35 Over Fences 3'	641, 642	\$65
36 & Over Flat	650	\$65
36 & Over Over Fences 3'	651, 652	\$65
BEGINNING EQUITATION		
Modified Child/Adult Flat	660	\$65
Modified Child/Adult Over Fences 2'9	661, 662	\$65
Low Child/Adult Flat	670	\$65
Low Child/Adult Over Fences 2'6	671, 672	\$65
PONY EQUITATION		
Large Pony Flat	680	\$65
Large Pony Over Fences 2'9	681, 682	\$65
Sm/Med Pony Flat	690	\$65
Sm/Med Pony Over Fences 2'3, 2'6	691, 692	\$65
NO MEMBERSHIP REQUIRED		
Pickwick Jr/Am Medal 3'3	727	\$65
Horse & Hound Pony Medal	565	\$65
OPEN EQUITATION CHALLENGE - Week 2		
Open Equitation Challenge 3'3	750	\$100
Open to Professional, Amateur & Junior Riders. To be shown over a gymnastic course. Fences not to exceed 3'3. A special award will be presented to the winner.		
RIDER MUST BE CPHA MEMBER		
CPHA 18 & Over 3'6	720	\$65
CPHA 17 & Under 3'6	721	\$65
CPHA Foundation Jr/Am 3'3	722	\$65
CPHA Style of Riding Jr/Am 3' - 3'3	723	\$65
CPHA Child/Adult Medal 3'	724	\$65
CPHA Horsemanship Jr/Am Medal 2'6	725	\$65
WCE Jr/Am 3'6	726	\$65
RIDER MUST BE NORCAL MEMBER		
NorCal Junior Medal 3'6	730	\$65
NorCal Senior Medal 3'6	731	\$65
NorCal Jr/Am Medal 3'	732	\$65
NorCal Pony Medal 2'3 - 2'9	733	\$65

OUTREACH CLASSES = FUN!



USHJA MEMBERSHIP =



GOLDEN BACKSTAGE PASS

AWARDS & REWARDS



OUTREACH FESTIVALS

USHJA



Join the fun at ushja.org/outreach/
Memberships are free!





USHJA Outreach

YEAR END AWARDS

for Riders, Horses, and Trainers



Bronze
50-74 points



Silver
75-99 points



Gold
100-199 points



Platinum
200+ points



USHJA
Outreach

Join the fun at ushja.org/outreach/!
Memberships are free!

USJHA OUTREACH RULES & SCHEDULE

SHP SUMMER CLASSIC
JULY 22 - 26, 2026

GIANT STEPS CHARITY CLASSIC
JULY 29 - AUG 2, 2026

The following classes are part of the 2026 USHJA Outreach Program. USEF and USHJA membership is not required to participate in an Outreach Competition or in any Outreach classes. Non-USEF and USHJA members will not be charged a Non-Member or Show Pass Fee. Riders and Trainers must be USHJA members at the free Outreach level or higher in order to be eligible for points toward year end awards. Hunter championships will be presented in each hunter section with the top four over fences earning under saddle points. Equitation championships will be presented in each equitation section with points counting equally for all classes. Combined section championships will be presented in each combined section with points counting equally for all classes. Ties broken by the most points over fences; if still tied, then most points in the equitation flat class.

HUNTER CLASSES: Hunter sections judged on performance and soundness. Manners shall be emphasized. Horses will not jog for soundness.

EQUITATION CLASSES: Riders may only ride one horse in an equitation class. To be judged on general horsemanship.

CROSS RAIL: Judged on suitability. No in and outs.

WALK TROT: Obstacles riders will be asked to ride over a course of obstacles at the walk and trot such as poles on the grounds and cones.

ATTIRE: Riders are required to wear approved protective head gear, riding boots and britches or jodhpurs.

BRAIDING: Please do not braid for the horse show. Horses/ponies will not be penalized for being braided.

USHJA OUTREACH SCHEDULE

GLOBAL JUMP DESIGN HUNTER 4 ARENA

SATURDAY 8:00 AM

870/871	Child Poles Hunters (W/T) 17 & U	6"
872	Child Poles Hunters (W/T) 17 & U	U/S
875/876	Adult Poles Hunters (W/T) 18 & O	6"
877	Adult Poles Hunters (W/T) 18 & O	U/S
850/851	Child Cross Rail Hunters 17 & U	1'6"
852	Child Cross Rail Hunters 17 & U	U/S
855/856	Adult Cross Rail Hunters 18 & O	1'6"
857	Adult Cross Rail Hunters 18 & O	U/S
802	Warm-Up Hunters	2'
830/831	Short Stirrup Hunters 17 & U	2'
832	Short Stirrup Hunters 17 & U	U/S
835/836	Long Stirrup Hunters 18 & O	2'
837	Long Stirrup Hunters 18 & O	U/S
801	Warm-Up Hunters	2'3"
810/811	Training Child Hunters 17 & U	2'3"
812	Training Child Hunters 17 & U	U/S
815/816	Training Adult Hunters 18 & O	2'3"
817	Training Adult Hunters 18 & O	U/S

GLOBAL JUMP DESIGN HUNTER 4 ARENA

SUNDAY 8:00 AM

887	Adult Poles Equitation (W/T) 18 & O	Flat
885/886	Adult Poles Equitation (W/T) 18 & O	6"
882	Child Poles Equitation (W/T) 17 & U	Flat
880/881	Child Poles Equitation (W/T) 17 & U	6"
867	Adult Cross Rail Equitation 18 & O	Flat
865/866	Adult Cross Rail Equitation 18 & O	1'6"
862	Child Cross Rail Equitation 17 & U	Flat
860/861	Child Cross Rail Equitation 17 & U	1'6"
847	Long Stirrup Equitation 18 & O	Flat
845/846	Long Stirrup Equitation 18 & O	2'
842	Short Stirrup Equitation 17 & U	Flat
840/841	Short Stirrup Equitation 17 & U	2'
827	Training Adult Equitation 18 & O	Flat
825/826	Training Adult Equitation 18 & O	2'3"
822	Training Child Equitation 17 & U	Flat
820/821	Training Child Equitation 17 & U	2'3"

ENTRIES CLOSE TUESDAY, JUNE 29TH. ENTER ONLINE AT SHOWGROUNDSLIVE.COM/SHP

USJHA OUTREACH CLASS LIST

SHP SUMMER CLASSIC
JULY 22 - 26, 2026

GIANT STEPS CHARITY CLASSIC
JULY 29 - AUG 2, 2026

OUTREACH CLASSES

	CLASS NUMBER	CLASS ENTRY FEE
2'3 HUNTERS AND EQUITATION		
Warm-Up Hunters 2'3	801	\$55
Training Child Hunters 17 & Under 2'3	810, 811, 812*	\$55
Training Adult Hunters 18 & Over 2'3	815, 816, 817*	\$55
	<i>* Under Saddle</i>	
Training Child Equitation 17 & Under 2'3	820, 821, 822*	\$55
Training Adult Equitation 18 & Over 2'3	825, 826, 827*	\$55
Riders may not show in classes over 2'9	<i>* Flat Class</i>	
2' HUNTERS AND EQUITATION		
Warm-Up Hunters 2'	802	\$55
Short Stirrup Hunters 17 & Under 2'	830, 831, 832*	\$55
Long Stirrup Hunters 18 & Over 2'	835, 836, 837*	\$55
	<i>* Under Saddle</i>	
Short Stirrup Equitation 17 & Under 2'	840, 841, 842*	\$55
Long Stirrup Equitation 18 & Over 2'	845, 846, 847*	\$55
Riders may not show in classes over 2'6	<i>* Flat Class</i>	
1'6 CROSS RAIL HUNTERS AND EQUITATION		
Child Cross Rail Hunters 17 & Under 1'6	850, 851, 852*	\$55
Adult Cross Rail Hunters 18 & Over 1'6	855, 856, 857*	\$55
	<i>* Under Saddle</i>	
Child Cross Rail Equitation 17 & Under 1'6	860, 861, 862*	\$55
Adult Cross Rail Equitation 18 & Over 1'6	865, 866, 867*	\$55
Riders may not show in classes over 2'	<i>* Flat Class</i>	
6" POLES WALK TROT HUNTERS AND EQUITATION		
Child Poles Hunters (Walk/Trot) 17 & Under 6"	870, 871, 872*	\$55
Adult Poles Hunters (Walk/Trot) 18 & Over 6"	875, 876, 877*	\$55
	<i>* Under Saddle</i>	
Child Poles Equitation (Walk/Trot) 17 & Under 6"	880, 881, 882*	\$55
Adult Poles Equitation (Walk/Trot) 18 & Over 6"	885, 886, 887*	\$55
Riders may not show in any other classes	<i>* Flat Class</i>	

ENTRIES CLOSE TUESDAY, JUNE 29TH. ENTER ONLINE AT SHOWGROUNDSLIVE.COM/SHP

SHP HUNT TEAMS OF 3

SHP SUMMER CLASSIC
JULY 22 - 26, 2026

GIANT STEPS CHARITY CLASSIC
JULY 29 - AUG 2, 2026

	CLASS #	ENTRY FEE
BARNSTYLE HUNT TEAMS OF 3	750	\$450/TEAM

BARNSTYLE HUNT TEAMS OF 3 - Week 1

Teams of Three, shown over a course in the ring, one to follow the other at a safe hunting distance. Combined ownership permitted. Judged on performance, suitability, manners, uniformity and appearance as a team. Jumps approximately 3'0". Horses and/or rider may only compete on one team. Ponies not entered elsewhere in this show may compete if ridden by an adult.

POST ENTRIES ONLY accepted until 4:00pm Thursday, July 23rd, 2026.

A portion of the entry fee will go towards The Living Room - a Santa Rosa based Charity supporting Women & Children in need of housing and assistance.





FRIDAY, JULY 30, 2026

GIANT STEPS TEAM CHALLENGE & EXHIBITOR PARTY

Join us in the VIP for a front row seat to SHP's ultimate team competition, followed by an evening of festivities to celebrate Giant Steps. The VIP will be open to all. Details to follow. In the meantime...

RIDERS: Below are the Team Challenge specifications. 'Bonus Points' are the key to your victory, so pick your teammate and get a head start on the competition!

	CLASS #	ENTRY FEE
GIANT STEPS TEAM CHALLENGE	901	\$500/TEAM

Open to all riders, to be shown over one hunter course and one jumper course in teams of two. Teams must consist of at least one non-professional rider. Rider 1 will jump a hunter-style course in the Main Hunter Arena over fences not to exceed 3'. At least 2 high options of 3'3 will be included, high-options will be awarded 1 point per jump. Standard hunter judging will be used. Rider 1 will receive a numerical score which will be announced at the conclusion of their round.

After Rider 1 has completed their hunter course and received a score, Rider 2 will jump a jumper-style course in the Grand Prix Arena over fences not to exceed 1.10m. At least 2 high options of 1.20m will be included, high options taken will remove 1 second each from the final time. Jumper round to be judged under Table III, faults converted. Each knock down or refusal adds 4 seconds to the overall time. Rider 2 final time will be deducted from Rider 1 hunter score. The team with the highest overall score at the end of both rounds wins. Prize to be awarded to the winning team.

BONUS POINTS

In addition to the high options, for every \$500 raised, 1 point on the hunter score will be added and 1 second from the jumper time will be deducted. There is no limit to the number of additional points raised. The team that raises the most funds will receive 2 points added to the hunter score, and 2 seconds deducted from the jumper time. The team that raises the second most funds will receive 1 point added to the hunter score, and 1 second deducted from the jumper time. **The deadline for pledged funds is Friday, August 1st at 2:00 pm. 100% of the funds raised will go directly to scholarship funds at Giant Steps Therapeutic Equestrian Center.**

There will be a special prize for the team with the highest amount of money raised. Costumes are encouraged but not required, and a special award for best team costume will be awarded. Team name is required. Riders must ride for awards in the Grand Prix Arena at the conclusion of the class.

ABOUT GIANT STEPS

Giant Steps is dedicated to enriching lives through the power of horses, team and community. Through the excellence of our equine assisted programs, people of all ages, means, and challenges experience the extraordinary benefits of therapeutic riding and activities.

Every year, hundreds of people come to Giant Steps Therapeutic Equestrian Center, wanting to break down barriers that may keep them from reaching their full potential. We serve people representing a wide a range of ages, disabilities, and needs. Through our equine therapy programs, we assist them in achieving their physical, mental, and social goals to lead richer, more independent lives.

As a nonprofit, we rely on our generous donors and dedicated team of volunteers to create a safe space and provide enriching and enjoyable programs. Joining Giant Steps is ultimately about joining an inclusive community, where different people connect and champion for each other's success. For more information, please visit giantstepsriding.org

Relationships Matter.



Protect Your Present. Ensure Your Future.

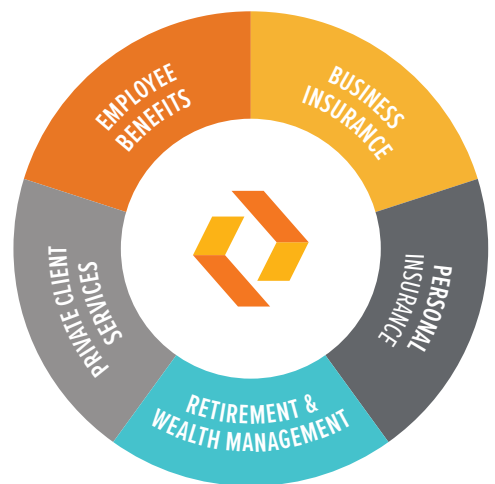
You deserve more than an insurance broker; you deserve someone who's there for you when you need them most. Someone who understands the value of a relationship that's built on trust, backed by actions, and bolstered by an extraordinarily high standard of service and protection. Peace of mind isn't just having the right policy, it's knowing you have the right partner.

The Perfect Fit For Your Peace Of Mind.

At Relation, you'll find superior 360° solutions for businesses, families, and individuals—all backed by a personal, relationship-based partnership you can rely on. From employee benefits and insurance for businesses large and small, to comprehensive personal insurance, retirement and wealth management, and extraordinary private client services for high-net-worth individuals, you'll benefit from our long-standing relationships with the industry's most important carriers. We know where to look, who to call, and—because of our deep industry experience—what to ask for. All on your behalf.

We've Got You Covered, Business And Personal.

If you have an insurance need, we'd love to help. Because we believe in more than making sure you are protected ... we believe in the peace of mind that comes from knowing you have a friend in the business. To us, it's not just insurance, it's a relationship.



If You Have Any Questions, We're Here To Help.
Contact Us Today.
(800) 404-4969

VIP INFORMATION

SHP SUMMER CLASSIC
JULY 22 - 26, 2026

GIANT STEPS CHARITY CLASSIC
JULY 29 - AUG 2, 2026



2026 brings a modern take on VIP at Sonoma Horse Park!

We have made the VIP experience accessible for all this year—Preferred Sonoma Caterers will continue to serve their amazing food from the north end of the berm, with a delicious and healthy menu of food for purchase daily. Tables may be purchased on either side of the berm for private use throughout the week and during evening events. All other seating is open to all and we encourage everyone to join us for a delicious meal or glass of wine! Tables are available for \$500 per week and can be put on a barn account to split out or put on individual entries. Additionally, Preferred Sonoma Caterers will offer their renowned bounty trays for sale on Saturday evenings for \$100, this includes fruit, cheese, crackers, breads, nuts, and spreads. All bounty trays must be purchased by Friday for Saturday delivery.

Tables will be assigned in order of booking, when making your reservation please let us know if you would like your table on the GGT Grand Prix arena side or the Relation Insurance Main Hunter arena side. Tables will be assigned from the center out unless you have a specific request. If we are able to accommodate your request we will.

Catered receptions are hosted on Thursday and Saturday evenings, while breakfast for all is served Wednesday, Friday, and Sunday weekly. Local wines and beer are poured each evening beginning at 3 pm until the end of the last class. All of these are complimentary for our exhibitors and spectators.

VIP TABLE

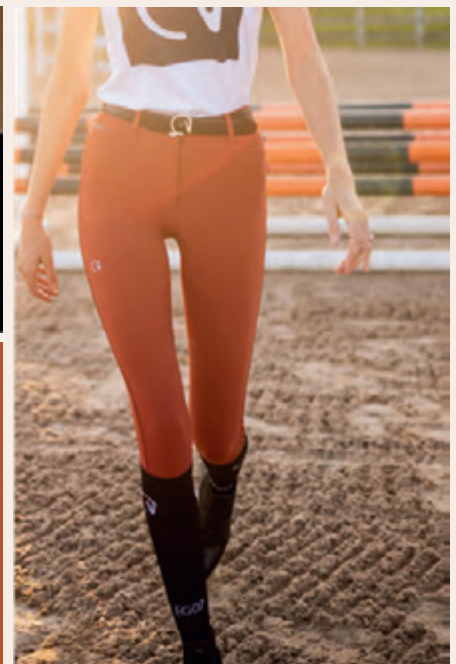
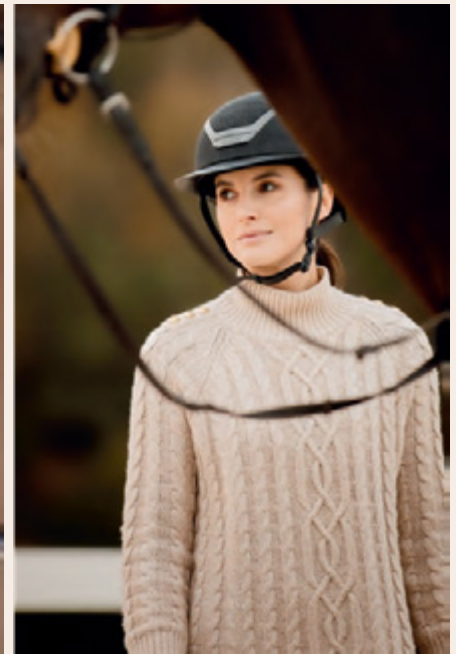
\$500 for a table of 8

\$100 for a bounty tray that serves 8
(must be booked by Friday of each week)

RESERVE VIP SEATS

Please email jeanette@sonomahorsepark.com the following information:

1. Name of horse show
2. Trainer name and barn name
3. Account(s) table should be billed to



HORSEPLAY

ARE YOU LOOKING FOR A NEW HAY SUPPLIER?

RT Hay's distribution center is located in Lincoln, CA for hay pick or local deliveries.



Orchard Alfalfa Mix
Alfalfa • Timothy
Orchard Grass
Meadow Grass

If you are located anywhere in California, chances are your neighbors are our customers.

We aim to deliver top-notch quality hay and personalized service to equestrian centers, feed stores, equine veterinary facilities, horse parks and private owners throughout California. Whether you want to pick up a few bales at our location in Lincoln California, order a local delivery, or have 500+ hay bales delivered anywhere in California simply give us a call to discuss your customized order and we'll be happy to help!

We provide quality feed for horses, llamas, alpacas, all sorts of minis, donkeys, cows, goats, sheep, rabbits, and yes... chinchillas too!

We believe in a personalized approach to business. For our new customers, we offer a meeting to get to know you and provide samples of the hay you may be ordering. Simply give us a call, text email to set up a meeting and see the samples in person!



Rick 916.865.6430 & Tracy Boggs - 916.952.9509



SHP SUMMER CLASSIC

TENTATIVE SCHEDULE
July 22 - 26, 2026

GGT FOOTING GRAND PRIZ	CHARLEIGH'S COOKIES JUMPER 2	RELATION INSURANCE MAIN HUNTER ARENA	HORSEPLAY HUNTER 2	LYLSTIX HUNTER 3	GLOBAL JUMP DESIGN HUNTER 4 ARENA
SATURDAY 8:00 AM	SATURDAY 8:00 AM	SATURDAY 8:00 AM	SATURDAY 8:00 AM	SATURDAY 8:00 AM	SATURDAY 8:00 AM
703 USEF Talent Search 2* 122 1.10m Junior 2.2b 125 1.10m Amateur 2.2b 108 1.20m Jr/Am 2.2b 105 1.30m Jr/Am 2.2b 102 1.40m Jr/Am 2.2b 802 \$5,000 1.20m Open 2.2b Jumper Classic **NS 890 Leadline 6 & U 1 \$35,000 2.2b / American Standard GRAND PRIZ Riders must ride for awards	164 .70m Jr/Am Jumpers 2.1 58 .80m Open Jumpers 2.1 161 .80m Jr/Am Jumpers 2.1 151 .85m Junior 2.1 154 .85m Amateur 2.1 60 .95m Open Jumpers 2.1 141 .95m Junior 2.1 144 .95m Amateur 2.1 132 1.00m Junior 2.2b 135 1.00m Amateur 2.2b 727 Pickwick Medal 3'3 704 WIHS Jumper Phase 3'6	390/391* AO Hunter 18-35 3'3 394 AO Hunter 18-35 U/S 395/396* AO Hunter 36 & O 3'3 399 AO Hunter 36 & O U/S 380/381* AO Hunter 18-35 3'6 384 AO Hunter 18-35 U/S 385/386* AO Hunter 36 & O 3'6 389 AO Hunter 36 & O U/S 705 WIHS Hunter Phase 3'6 700 Dover/USEF Medal 3'6 400/401* Small Jr 17 & U 3'6 404 Small Jr 17 & U U/S 410/411* Large Jr 17 & U 3'6 721/720 CPHA 17 under/ 18+ 414 Large Jr 17 & U U/S 420/421* Small Jr 17 & U 3'3 424 Small Jr 17 & U U/S 430/431* Large Jr 17 & U 3'3 434 Large Jr 17 & U U/S *2nd Round is 1st Classic Round	732 NorCal Jr/Am Medal 3' 708 Ariat Adult Medal 3' 450/451* AA Hunter 18-35 3' 460/461* AA Hunter 36 & O 3' 454 AA Hunter 18-35 U/S 464 AA Hunter 36 & O U/S 719 Onondarka Medal 3' 480/481* Child Hunter 14-17 3' 474 Child Hunter 13 & U U/S 484 Child Hunter 14-17 U/S 711 USEFNCEA Jr Medal 3'3 *2nd Round is 1st Classic Round	702 USEF Pony Medal 2'3-9 530/531* Small Pony Hunter 2'3 534 Small Pony Hunter U/S 540/541* Med Pony Hunter 2'6 562/563 Sm/Med Grm Pony 2'3-6 544 Med Pony Hunter U/S 550/551* Large Pony Hunter 2'9 572/573 Child Green Pony 2'9 554 Large Pony Hunter U/S 512/513 Low Child Hunter 2'6 522/523 Low AA Hunter 2'6 492/493 Mod AA Hunter 2'9 502/503 Mod AA Hunter 2'9 717 PCHA Horsemanship 2'9 *1st Round Pony Classic	982 Walk/Trot Eq 984/985 Walk/Trot Pleasure 870/871 Child Hunter Poles 3* 875/876 Adult Hunter Poles 3* 872 Child Hunter Poles U/S 877 Adult Hunter Poles U/S 850/851 Child Hunter X-Rail 1'6 855/856 Adult Hunter X-Rail 1'6 852 Child Hunter X-Rail U/S 857 Adult Hunter X-Rail U/S 830/831 Short Stirrup Hunter 2' 835/836 Long Stirrup Hunter 2' 832 Short Stirrup Hunter U/S 837 Long Stirrup Hunter U/S 810/811 Training Child Hunter 2'3 815/816 Training Adult Hunter 2'3 812 Training Child Hunter U/S 817 Training Adult Hunter U/S 582/583 Sm/Med Child Pony 2' 592/593 Large Child Pony 2'6

GGT FOOTING GRAND PRIZ	CHARLEIGH'S COOKIES JUMPER 2	RELATION INSURANCE MAIN	HORSEPLAY HUNTER 2	LYLSTIX HUNTER 3	GLOBAL JUMP DESIGN
SUNDAY 8:00 AM	SUNDAY 8:00 AM	SUNDAY 8:00 AM	SUNDAY 8:00 AM	SUNDAY 8:00 AM	SUNDAY 8:00 AM
3 \$10,000 1.35m Open 2.2b Jumper Classic 6 \$4,000 1.30m Jr/Am 2.2b Jumper Classic 7 \$3,000 1.20m Jr/Am 2.2b Jumper Classic 801 \$1,500 1.10m Jr/Am 2.2b Jumper Classic**N.S. Riders must ride for awards	165 .70m Jr/Am Jumper 2.2b 162 .80m Jr/Am Jumper 2.2b 152 .85m Junior 2.2b 155 .85m Amateur 2.2b 142 .95m Junior 2.2b 145 .95m Amateur 2.2b 800 \$1,000 1.00m Jr/Am 2.2b Jumper Classic**N.S. 723 CPHA Style of Riding 3'3 Classic riders must ride for awards	731 NorCal Sr Medal 3'6 730 NorCal Jr Medal 3'6 382/383* AO Hunter 18-35 3'6 387/388* AO Hunter 36 & O 3'6 392/393* AO Hunter 18-35 3'3 397/398* AO Hunter 36 & O 3'3 422/423* Small Jr 17 & U 3'3 432/433* Large Jr 17 & U 3'3 402/403* Small Jr 17 & U 3'6 412/413* Large Jr 17 & U 3'6 15 \$1,500 JR/AO Classic 3'3-6 *Handy Class Classic riders must ride for awards	472/473 Child Hunter 13 & U 3' 482/483 Child Hunter 14-17 3' 17 \$1,000 Children's Hunter Classic 3' 452/453 AA Hunter 18-35 3' 462/463 AA Hunter 36 & O 3' 16 \$1,000 Adult Am Hunter Classic 3' 724 CPHA Child/Adult 3' 714 PCHA 35 & O 3'3 715 PCHA 18-34 3'3 713 Hamel Foundation 3'3 712 ASPCA MacLay 3'6 722 CPHA Foundation 3'3 Classic riders must ride for awards	552/553* Large Pony Hunter 2'9 542/543* Med Pony Hunter 2'6 532/533* Small Pony Hunter 2'3 18 Pony Hunter Classic 670 Low Child/AA Eq Flat 20 \$1,500 Low Ch/AA 2'6 Hunt & Go Derby **NS 660 2'9* Child/AA Eq Flat 661/662 Mod Child/AA Eq 2'9 19 \$500 Mod Ch/AA 2'9 Hunt & Go Derby *Handy Class Classic/Derby riders ride for awards	983 Walk/Trot Eq 986/987 Walk/Trot Pleasure 882 Child Eq Poles Flat 887 Adult Eq Poles Flat 860/861 Child Eq X-Rail 1'6 865/866 Adult Eq X-Rail 1'6 862 Child Eq X-Rail Flat 867 Adult Eq X-Rail Flat 840/841 Short Stirrup Eq 2' 845/846 Long Stirrup Eq 2' 842,847 Sh St Eq Flat/Lg St Flat 545 Child Pony Classic 820/821 Training Child Eq 2'3 825/826 Training Adult Eq 2'3 822,827 Train Child Eq Flat/Ad Flat

ENTRIES CLOSE TUESDAY, JUNE 29TH. ENTER ONLINE AT SHOWGROUNDSLIVE.COM/SHP



SHP GIANT STEPS CHARITY CLASSIC

TENTATIVE SCHEDULE
July 29 - Aug 2, 2026

GGT FOOTING GRAND PRIX	CHARLEIGH'S COOKIES JUMPER 2	RELATION INSURANCE MAIN HUNTER ARENA	HORSEPLAY HUNTER 2	LYLSTIX HUNTER 3	GLOBAL JUMP DESIGN HUNTER 4 ARENA
WEDNESDAY	WEDNESDAY 8:00 AM	WEDNESDAY 8:00 AM	WEDNESDAY 8:00 AM	WEDNESDAY 8:00 AM	WEDNESDAY 8:00 AM
40 1.10m Jumpers 2.2d 905 1.10m YO (4 - 7 Yrs) 2.d 29 1.20m Jumpers 2.2d 907 1.20m YO (5 - 7 Yrs) 2.2.d 909 1.30m YO (6 - 7 Yrs) 2.2.d 23 1.40m Jumpers 2.2d	54 .80m Jumpers 2.2b 55 .80m Jumpers 2.1 50 .90m Jumpers 2.2b 51 .90m Jumpers 2.1 901, 902 0.90m Young Jumper (4 - 7 Years Old) III 47 1.00m Jumpers 2.2b 48 1.00m Jumpers 2.d 903, 904 1.00m Young Jumper (4 - 7 Years Old) 2.2b	245 Green Conformation Model 235 High Perform. Conform Model 365 Warm-Up Hunter 3'3-9 240/241 Green Conformation 36 220/221 Green Hunter 36 244 Green Conformation U/S 224 Green Hunter U/S 250/251 Performance Hunter 36 254 Performance Hunter U/S 210/211 Green Hunter 39 214 Green Hunter U/S 230/231 High Perf Conf 39 200/201 High Perf Hunter 39 234 High Perf Conf U/S 204 High Perf Hunter U/S 260/261 Performance Hunter 33	366 Warm-Up Hunter 3-3'3 320/321 USHJA 3' Hunters 3' 324 USHJA 3' Hunter U/S 280/281 Green Hunters 3' 960/961 Young Hunter 6&U 3' 284 Green Hunters U/S 964 Young Hunter 6&U U/S 270/271 Green Hunters 33 950/951 Young Hunter 7&U 33 274 Green Hunters U/S 954 Young Hunter 7&U U/S	367 Warm-Up Hunter 2'6-3' 340/341 USHJA 2'6 Hunter 2'6 344 USHJA 2'6 Hunter U/S 330/331 USHJA 2'9 Hunter 2'9 334 USHJA 2'9 Hunter U/S 970/971 Young Hunter 5&U 2'9 974 Young Hunter 5&U U/S 290/291 SHP Hunters 3' 3' 294 SHP Hunters 3' U/S	368 Warm-Up Hunter 2'-2'6 360/361 USHJA 2' Hunters 2' 364 USHJA 2' Hunters U/S 350/351 USHJA 2'3 Hunters 2'3 354 USHJA 2'3 Hunters U/S 325/326 SHP 2'6 Hunters 2'6 329 SHP 2'6 Hunters U/S
WEDNESDAY	803 \$5,000 Open 2b 1.30m Jumper Classic**N.S.				
	Riders must ride for awards				

GGT FOOTING GRAND PRIX	CHARLEIGH'S COOKIES JUMPER 2	RELATION INSURANCE MAIN HUNTER ARENA	HORSEPLAY HUNTER 2	LYLSTIX HUNTER 3	GLOBAL JUMP DESIGN HUNTER 4 ARENA
THURSDAY	THURSDAY 8:00 AM	THURSDAY 8:00 AM	THURSDAY 8:00 AM	THURSDAY 8:00 AM	THURSDAY 8:00 AM
41 1.10m Jumpers 2.1 906 1.10m YO Jumper 4-7 II.d 30 1.20m Jumpers 2.1 908 1.20m YO Jumper 5-7 27 1.30m Jumpers 2.1 100 1.40m Jr/Am 2.1 103 1.30m Jr/Am 2.1 910 1.30m YO 6-7 II.1 106 1.20m Jr/Am 2.1 120/123 1.10m Junior 2.1 & AMI 2 \$24,500 2.2b WELCOME Riders must ride for awards	66 .70m Jumpers 2.2d 56 .80m Jumpers 2.2d 52 .90m Jumpers 2.2d 49 1.00m Jumpers 2.2d 130 1.00m Junior 2.1 133 1.00m Amateur 2.1 709 USHJA Jump Seat 17&U 33 710 USHJA Jump Seat 18&O 33	232/233* High Perform Conform 39 212/213* Green Hunter 39 202/203* High Perform Work 39 222/223* Green Hunter 36 242/243* Green Conformation 36 252/253* Performance Hunter 264 Performance Hunter 262/263* Performance Hunter 33 375 Warm-Up Hunters 3' *Handy Class	369 Warm-Up Hunters 3-3'3 322/323 USHJA 3' Hunter 3' 282/283 Green Hunter 3' 962/963 Young Hunter 6&U 3' 272/273 Green Hunter 33 952/953 YO Hunter 7&U 33 716 PCHA 14&U 33* 701 USEF Adult Medal 33 721 CPHA Medal 17 & U 36 720 CPHA Medal 18 & O 36	370 Warm-Up Hunters 2-2'6 342/343 USHJA 2'6 Hunter 2'6 332/333 USHJA 2'9 Hunter 2'9 972/973 Young Hunter 5&U 2'9 292/293 SHP Hunters 3' 3'	371 Warm-Up Hunters 2-2'6 362/363 USHJA 2' Hunters 2' 352/353 USHJA 2'3 Hunters 2'3 327/328 SHP Hunters 2'6 2'6 373 Child Pony Warm-Up 2'-2'6

GGT FOOTING GRAND PRIX	CHARLEIGH'S COOKIES JUMPER 2	RELATION INSURANCE MAIN HUNTER ARENA	HORSEPLAY HUNTER 2	LYLSTIX HUNTER 3	GLOBAL JUMP DESIGN HUNTER 4 ARENA
FRIDAY	FRIDAY 8:00 AM	FRIDAY 8:00 AM	FRIDAY 8:00 AM	FRIDAY 8:00 AM	FRIDAY 8:00 AM
42 1.10m Jumpers 2.2d 31 1.20m Jumpers 2.2d 28 1.30m Jumpers 2.2d 121 1.10m Junior 2.2d 124 1.10m Amateur 2.2d 107 1.20m Jr/Am 2.2d 104 1.30m Jr/Am 2.2d 101 1.40m Jr/Am 2.2d 1901 Giant Steps Team Challenge - Jumper Riders must ride for awards	163 .70m Jr/Am Jumpers 2.2d 57 .80m Open Jumpers 2.2d 160 .80m Jr/Am Jumpers 2.2d 150 .85m Junior 2.2d 153 .85m Amateur 2.2d 59 .95m Open Jumpers 2.2d 140 .95m Junior 2.2d 143 .95m Amateur 2.2d 131 1.00m Junior 2.2d 134 1.00m Amateur 2.2d 726 WCE Medal Jr/Am 36	12 \$10,000 USHJA International Derby 13 \$10,000 USHJA National Hunter Derby Open**NS 14 \$5,000 USHJA National Hunter Derby Jr/Am**NS 901 Giant Steps Team Challenge - Hunter Riders must ride for awards	610 Eq 14 & U Flat 630 Eq 15-17 Flat 611/612 Eq 14 & U 3' 631/632 Eq 15-17 3' 706 THIS Child Medal 3' 640 Eq 18-35 Flat 650 Eq 36 & O Flat 641/642 Eq 18-35 3' 651/652 Eq 36 & O 3' 707 THIS Adult Medal 3' 741 USHJA Hunt Seat 33 718 Foxfield Medal 33*	725 CPHA Horsemanship 2'6 520/521 Low AA Hunter 2'6 510/511 Low Child Hunter 2'6 524 Low AA Hunter U/S 514 Low Child Hunter U/S 500/501 Mod AA Hunter 2'9 490/491 Mod Child Hunter 2'9 504 Mod AA Hunter U/S 494 Mod Child Hunter U/S 680 Large Pony Eq Flat 681/682 Large Pony Eq 2'9 570/571 Large Green Pony 2'9 574 Large Green Pony U/S 690 Sm/Med Pony Eq Flat 691/692 Sm/Med Pony Eq 2'3-6 560/561 Sm/Med Green Pony 2'3-6 564 Sm/Med Green Pony U/S 733 NorCal Pony Medal 2'3-9	** At conclusion of hunter derbies 580/581 Sm/Med Child Pony 2' 584 Sm/Med Child Pony U/S 590/591 Large Child Pony 2'6 565 Horse & Hound Pony Medal 594 Large Child Pony 2'6 U/S 980/981 Walk/Trot Eq

ENTRIES CLOSE TUESDAY, JUNE 29TH. ENTER ONLINE AT SHOWGROUNDSLIVE.COM/SHP



SHP GIANT STEPS CHARITY CLASSIC

TENTATIVE SCHEDULE
July 29 - Aug 2, 2026

GGT FOOTING GRAND PRIX	CHARLEIGH'S COOKIES JUMPER 2	RELATION INSURANCE MAIN HUNTER ARENA	HORSEPLAY HUNTER 2	LYLSTIX HUNTER 3	GLOBAL JUMP DESIGN HUNTER 4 ARENA	
SATURDAY	SATURDAY 8:00 AM 703 USEF Talent Search 2* 122 1.10m Junior 2.2b 125 1.10m Amateur 2.2b 108 1.20m Jr/Am 2.2b 105 1.30m Jr/Am 2.2b 102 1.40m Jr/Am 2.2b 802 \$5,000 1.20m Open 2.2b Jumper Classic**N.S. 890 Leadline 6 & U 1 \$60,000 2.2a National Standard Grand Prix *N.S. Riders must ride for awards	SATURDAY 8:00 AM 164 .70m Jr/Am Jumpers 2.1 58 .80m Open Jumpers 2.1 161 .80m Jr/Am Jumpers 2.1 151 .85m Junior 2.1 154 .85m Amateur 2.1 60 .95m Open Jumpers 2.1 141 .95m Junior 2.1 144 .95m Amateur 2.1 132 1.00m Junior 2.2b 135 1.00m Amateur 2.2b 727 Pickwick Medal 3'3 704 WIHS Jumper Phase 3'6	SATURDAY 8:00 AM 390/391* AO Hunter 18-35 3'3 394 AO Hunter 18-35 U/S 395/396* AO Hunter 36 & O 3'3 399 AO Hunter 36 & O U/S 380/381* AO Hunter 18-35 3'6 384 AO Hunter 18-35 U/S 385/386* AO Hunter 36 & O 3'6 389 AO Hunter 36 & O U/S 705 WIHS Hunter Phase 3'6 700 Dover/US Jr Medal 3'6 400/401* Small Jr 17 & U 3'6 404 Small Jr 17 & U U/S 721/720 CPHA 17 under/ 18+ 410/411* Large Jr 17 & U 3'6 414 Large Jr 17 & U U/S 420/421* Small Jr 17 & U 3'3 424 Small Jr 17 & U U/S 430/431* Large Jr 17 & U 3'3 434 Large Jr 17 & U U/S *2nd Round is 1st Classic Round	SATURDAY 8:00 AM 732 NorCal Jr/Am Medal 3' 708 Ariat Adult Medal 3' 450/451* AA Hunter 18-35 3' 480/481* AA Hunter 36 & O 3' 454 AA Hunter 36 & O U/S 464 AA Hunter 36 & O U/S 719 Onondaka Medal 3' 470/471* Child Hunter 13 & U 3' 480/481* Child Hunter 14-17 3' 474 Child Hunter 13 & U U/S 484 Child Hunter 14-17 U/S 711 USEF/NCEA Jr Medal 3'3 *2nd Round is 1st Classic Round	SATURDAY 8:00 AM 702 USEF Pony Medal 2'3-9 530/531* Small Pony Hunter 2'3 534 Small Pony Hunter U/S 540/541* Med Pony Hunter 2'6 562/563 Sm/Med Gm Pony 2'3-6 544 Med Pony Hunter U/S 550/551* Large Pony Hunter 2'9 572/573 Large Green Pony 2'9 554 Large Pony Hunter U/S 512/513 Low Child Hunter 2'6 492/493 Mod Child Hunter 2'9 502/503 Mod AA Hunter 2'9 717 PCHA Horsemanship 2'9 *2nd Round is 1st Classic Round	SATURDAY 8:00 AM 982 Walk/Trot Eq 984/985 Walk/Trot Pleasure 870/871 Child Hunter Poles 3* 875/876 Adult Hunter Poles 3* 872 Child Hunter Poles U/S 877 Adult Hunter Poles U/S 850/851 Child Hunter X-Rail 1'6 855/856 Adult Hunter X-Rail 1'6 852 Child Hunter X-Rail U/S 857 Adult Hunter X-Rail U/S 830/831 Short Stirrup Hunter 2' 835/836 Long Stirrup Hunter 2' 832 Short Stirrup Hunter U/S 837 Long Stirrup Hunter U/S 810/811 Training Child Hunter 2'3 815/816 Training Adult Hunter 2'3 812 Training Child Hunter U/S 817 Training Adult Hunter U/S 582/583 Sm/Med Child Pony 2' 592/593 Large Child Pony 2'6
SUNDAY	SUNDAY 8:00 AM 3 \$10,000 1.35m Open 2.2b Jumper Classic 6 \$4,000 1.30m Jr/Am 2.2b Jumper Classic 7 \$3,000 1.20m Jr/Am 2.2b Jumper Classic 801 \$1,500 1.10m Jr/Am 2.2b Jumper Classic**N.S. Classic riders must ride for awards	SUNDAY 8:00 AM 731 NorCal Sr Medal 3'6 730 NorCal Jr Medal 3'6 382/383* AO Hunter 18-35 3'6 387/388* AO Hunter 36+ 3'6 392/393* AO Hunter 18-35 3'3 397/398* AO Hunter 36 & O 3'3 422/423* Small Jr 17 & U 3'3 432/433* Large Jr 17 & U 3'3 402/403* Small Jr 17 & U 3'6 412/413* Large Jr 17 & U 3'6 15 \$1,500 JR/AO Hunter Classic 3'3-6 *Handy Class Classic riders must ride for awards	SUNDAY 8:00 AM 472/473 Child Hunter 13 & U 3' 482/483 Child Hunter 14-17 3' 17 \$1,000 Children's Hunter Classic 3' 18 \$500 Pony Classic 2'3-9 452/453 AA Hunter 18-35 3' 462/463 AA Hunter 36 & O 3' 16 \$1,000 Adult Am Classic 3' 724 CPHA Child/Adult 3' 714 PCHA 35 & O 3'3 715 PCHA 18-34 3'3 712 ASPCA Maday 3'6 722 CPHA Foundation 3'3 Classic riders must ride for awards	SUNDAY 8:00 AM 552/553* Large Pony Hunter 2'9 542/543* Med Pony Hunter 2'6 532/533* Small Pony Hunter 2'3 18 Pony Hunter Classic 670 Low Child/AA Eq Flat 671/672 Low Child/AA Eq 2'6 20 \$1,500 Low Ch/AA 2'6 Hunt & Go Derby **NS 660 Mod Child/AA Eq Flat 661/662 Mod Child/AA Eq 2'9 19 \$500 Mod Ch/AA 2'9 Hunt & Go Derby *Handy Class Classic/Derby riders must ride for awards	SUNDAY 8:00 AM 983 Walk/Trot Eq 986/987 Walk/Trot Pleasure 880/881 Child Eq Poles 3* 885/886 Adult Eq Poles 3* 882 Child Eq Poles Flat 887 Adult Eq Poles Flat 860/861 Child Eq X-Rail 1'6 865/866 Adult Eq X-Rail 1'6 862 Child Eq X-Rail Flat 867 Adult Eq X-Rail Flat 840/841 Short Stirrup Eq 2' 845/846 Long Stirrup Eq 2' 842,847 Short St Eq Flat/Long St Flat 545 Child Pony Classic 820/821 Training Child Eq 2'3 825/826 Training Adult Eq 2'3 822 Training Child Eq Flat 827 Training Adult Eq Flat	

ENTRIES CLOSE TUESDAY, JUNE 29TH. ENTER ONLINE AT SHOWGROUNDSLIVE.COM/SHP



SHP Summer Classic

July 22-26, 2026

Giant Steps Charity Classic

July 29-August 2, 2026

ENTRIES CLOSE: **June 29, 2026**

ENTER ONLINE AT SHOWGROUNDSLIVE.COM/SHP

OWNER OR AUTHORIZED AGENT

RIDER 1

TRAINER

Owner Name	Rider Name		Trainer Name	
Address	Address		Address	
City	State	Zip	City	State
Social Security or TIN #	Phone	CPHA #	E-Mail	Zip
E-Mail	USEF/USHJA #	NorCal #	Cell Phone	Other Phone
USEF/USHJA #	PCHA #	NorCal #	USEF/USHJA #	NorCal #

PRIZE MONEY PAID TO

RIDER 2

PAYMENT INFO

Owner Name	Rider Name		Credit Card #	
Address	Address		Cardholder Name	
City	State	Zip	Signature	Exp.
Social Security or TIN #	Phone	CPHA #	Deposit Received \$	Billing
E-Mail	USEF/USHJA #	NorCal #	Ck #	Date
USEF/USHJA #	PCHA #	NorCal #	Closeout \$	Date
			USEF/USHJA #	PCHA #
				NorCal #

NAME OF HORSE		AGE	COLOR	SEX	HEIGHT	RIDERS		CLASSES
Microchip #						Rider 1	Date of Birth	
USEF/USHJA #	Measurement #	1st Yr	2nd Yr	Sm	Med	Rider 2	Date of Birth	
				Lg				

FEDERATION ENTRY AGREEMENT: This document waives and releases important legal rights. Please read carefully before signing.

I understand and expressly acknowledge that I am fully aware that horseback riding and jumping, horse sports, and my participation in this Horse Show competition involve inherent dangerous risks that include, but are not limited to, the risks of accident, loss, serious bodily injury, property damage, and/or death ("Harm"). I hereby agree to expressly assume ALL RISK OF HARM to myself and my horse(s), and choose to voluntarily participate in this Horse Show.

I HEREBY EXPRESSLY VOLUNTARILY, AND UNCONDITIONALLY RELEASE, INDEMNIFY AND HOLD HARMLESS Howard Herman, Marcia Herman, Meredith Herman, Ashley Herman, Riverside Equestrian Center, Sonoma Horse Park, their owners, officers, members, agents, employees, licensees and invitees, as well as any other person, firm, corporation, company, entity, or anyone in any way connected with the ownership and management of the show premises and the Horse Show, or in control of the premises or equipment related thereto (collectively, "Releasees") from and against ANY AND ALL CLAIMS FOR INJURIES, DAMAGES, AND/OR LOSSES connected with participation in this Horse Show, and includes reimbursement of Releasees' costs and attorney's fees incurred in defense of such claims. I further agree to this release, indemnification, and holding harmless WHETHER OR NOT SUCH CLAIM, INJURY, DAMAGE, OR LOSS RESULTED, DIRECTLY OR INDIRECTLY, FROM MY NEGLIGENCE ACTS OR OMISSIONS OR THE NEGLIGENCE ACTS OR OMISSIONS OF RELEASEES, to the fullest extent allowed by law. I also acknowledge that no representations or warranties, whether oral or written, implied or expressed, have been made by Releasees concerning the Horse Show event, or the activities at Riverside Equestrian Center, and/or Sonoma Horse Park, or any other member.

I understand and agree that this Release, Assumption of Risk, Waiver and Indemnification shall be binding upon my heirs and assigns. If a parent or guardian is signing below, he or she consents to the minor child's participation in the Horse Show and agrees to all of the above provisions and agrees to assume all of the obligations of this release of liability on the minor child's behalf.

I HEREBY DECLARE THAT I CAREFULLY HAVE READ THE FOREGOING RELEASE OF ALL LIABILITY, I AM FULLY AWARE OF THE LEGAL CONSEQUENCES OF SIGNING BELOW AND I AGREE TO THE TERMS OF THE RELEASE IN FULL.

OWNER/AGENT (Mandatory)

RIDER/HANDLER (Mandatory)

TRAINER (Mandatory)

Signature	Signature	Signature
Print Name	Is Rider/Handler a U.S. Citizen (circle):	Print Name
Parent/Guardian (required if Rider/Handler is a minor)	YES NO	Emergency Contact #
Print Name	Is Rider/Handler a U.S. Citizen (circle):	STABLE WITH:
	YES NO	

ASSOCIATION FEES	
SHOW FEES	\$50
10X10 Stall	\$450
10X12 Stall	\$550
Office	\$135
Manure Disposal	\$55
Medical	\$65
MISC FEES	
1.2M+ and Rated Hunters	\$140
1.2M and Equitation & Hunters	\$115
Late Entry	\$75
Photography Fee	\$100

MUST ENTER ONLINE: showgroundslive.com/shp

CONTACT: Lyn Nelson (717) 870-3085 or lyn@sonomahorsepark.com

KYLEE ARBUCKLE
310-293-1667



HEATHER ROADES
818-383-3461

KINDRED HILL

— FARM —



LOCATED AT BURTON RANCH
3421 NICASIO VALLEY RD NICASIO, CA 94946

[HTTPS://WWW.KINDREDHILLFARM.COM/](https://www.kindredhillfarm.com/)



CHARLEIGH'S COOKIES

hand made with nature's flavors
and organic ingredients



photos by
Woodside Images

YOU HAVE A CHOICE



So do we. We choose only organic and natural ingredients because we embrace healthy living and eating for all of the precious creatures in our lives. Choose to show your gratitude with hand made, wholesome cookies that are delivered fresh to your door.

Have You Thanked Your Horse Today?

(855) SWAG-LUV • CHARLEIGHSCOOKIES.COM
#CCSWAGLUV



Outfitted by

Northern CA's Premier Source for

Industry best
apparel, boots,
equipment, and
custom services

Branding &
Marketing

Permanently
located at Sonoma
Horse Park



shop online!



 *the* Equestrian's Concierge LLC



K·M·C FARM

KARA MIA LOVE • CELIA MAHER • KELLY CREGG

LOCATED AT SONOMA HORSE PARK

WWW.KMCFARM.NET

SONOMA HORSE PARK

2026 RULES, REGULATIONS & GENERAL INFORMATION

EVERY CLASS OFFERED HEREIN WHICH IS COVERED BY THE RULES AND SPECIFICATIONS OF THE CURRENT USEF RULE BOOK WILL BE CONDUCTED AND JUDGED IN ACCORDANCE THEREWITH.

USEF MEMBERSHIP STATEMENT: The 2026 SHP Summer Classic & Giant Steps Charity Horse Shows are covered by the rules and specifications of the current USEF Rule Book and will be conducted and judged in accordance therewith. Eventing Competitions at the Modified Level or above, Combined Driving Competitions at the Advanced Level, Dressage Competitions, Endurance Rides and Vaulting Competitions: (See GR828.4 of the Federation rules). Life, Senior active and junior active members shall be eligible to participate in all classes at Regular Competitions, Eventing Competitions at the Modified Level or above and Combined Driving Competitions at the Advanced Level, Dressage, Reining and Vaulting Competitions and Endurance Rides. A non member may participate as a handler, rider, driver, owner, lessee, or agent at Regular Competitions, Eventing Competitions, Dressage Competitions, Reining Competitions and Combined Driving Competitions upon payment of a Show Pass fee. Participants in the following classes are exempted from the Requirements of this rule: 1) leadline; 2) exhibitions; 3) games and races; 4) classes for 4-H members; 5) walk trot and academy classes (academy classes are classes limited to horses used regularly in a lesson program); 6) USDF introductory level tests, pas de deux and quadrille classes; 7) assistant handlers in Dressage Sport Horse Breeding classes.

RELEASES:

2a. FEDERATION ENTRY AGREEMENT, PER USEF 905.4: By entering a Federation-licensed Competition and signing this entry blank as the Owner, Lessee, Trainer, Manager, Agent, Coach, Driver, Rider, Handler, Vaultor or Longeur and on behalf of myself and my principals, representatives, employees and agents, I agree that I am subject to the Bylaws and Rules of the United States Equestrian Federation, Inc. (the "Federation") and the local rules of the competition. I agree to be bound by the Bylaws and Rules of the Federation and of the competition. I will accept as final the decision of the Hearing Committee on any question arising under the Rules, and agree to release and hold harmless the competition, the Federation, their officials, directors and employees for any action taken under the Rules. I represent that I am eligible to enter and/or participate under the Rules, and every horse I am entering is eligible as entered. I agree that as a condition of and in consideration of acceptance of entry, the Federation and/or the Competition may use or assign photographs, videos, audios, cable-casts, broadcasts, internet, film, new media or other likenesses of me and my horse from the competition for the promotion, coverage or benefit of the competition, sport, or the Federation. Those likenesses shall not be used to advertise a product and may not be used in such a way as to jeopardize amateur status. I hereby expressly and irrevocably waive and release any rights in connection with such use, including any claim to compensation, invasion of privacy, right of publicity, or to misappropriation. The construction and application of Federation rules are governed by the laws of the State of New York, and any action instituted against the Federation must be filed in NY State. See GR908.4.

2b. SAFE SPORT STATEMENT: Reminder: All USEF Life and Senior Active members, as well as participants who have regular contact with minor athletes, are required to comply with the U.S. Center for SafeSport training requirements to be eligible to participate in the competition. All participants must adhere to the U.S. Center for SafeSport Code, USEF Safe Sport Policy, and the Minor Athlete Abuse Prevention Policies. More information about these can be found at usef.org

2c. PCHA: The competition and its management agree to defend, indemnify and hold harmless the PCHA, its directors, officers, committee members, agents and employees from and against all loss or damage including any and all claims arising out of the competition, including claims as to personal injury or property loss or damage suffered during or in conjunction with competition, whether or not such injury or loss resulted directly or indirectly from negligent acts or omissions of said directors, officers, committee members, agents or employees.

2d. SONOMA HORSE PARK: I HEREBY EXPRESSLY, VOLUNTARILY, AND UNCONDITIONALLY RELEASE, INDEMNIFY AND HOLD HARMLESS Howard Herman, Meredith Herman, Ashley Herman, Riverside Equestrian Center, and/or Sonoma Horse Park, their owners, officers, members, agents, employees, licensees and invitees, as well as any other person, firm, corporation, company, entity, or anyone in any way connected with the ownership and management of the show premises and the Horse Show, or in control of the premises or equipment related thereto (collectively, "Releasees") from and against ANY AND ALL CLAIMS FOR INJURIES, DAMAGES, AND/OR LOSSES connected with participation in this Horse Show. This includes, but is not limited to, claims for monetary damages, attorney's fees, costs, losses, and/or causes of action against Releasees for any and all Harm to me or my horse(s) and for any Harm caused or contributed in any way to by me or my horse(s) to others, arising out of or in any way connected with participation in this Horse Show, and includes reimbursement of Releasees' costs and attorney's fees incurred in defense of such claims. I further agree to this release, indemnification, and holding harmless WHETHER OR NOT SUCH CLAIM, INJURY, DAMAGE, OR LOSS RESULTED, DIRECTLY OR INDIRECTLY, FROM MY NEGLIGENT ACTS OR OMISSIONS OR THE NEGLIGENT ACTS OR OMISSIONS OF RELEASEES, to the fullest extent allowed by law. I also acknowledge that no representations or warranties, whether oral or written, implied or expressed, have been made by Releasees concerning Horse Show premises, the Horse Show event, or activities at Burgundy Farms, Riverside Equestrian Center, and/or Sonoma Horse Park, or any other matter.

MANAGEMENT: The Horse Show Management reserves the right to itself to interpret all questions and conditions in regard to, or arising out of, or incident to the show without claims for damages or recourse of any kind. All questions not covered in these Rules & Regulations shall be decided by the horse show manager; its decision to be final. The Horse Show Management reserves to itself the right to refuse, accept conditionally, or to cancel any entries, disqualify any riders or exhibitors, prohibit exhibition of entries, and cancel award prizes, without claim for damages; to change any course, to cancel or combine any unfilled classes, or to reschedule classes as competition warrants; to change rings or rotate judges, and to change specifications in jumper classes.

CONDITION OF ENTRY: Every horse entered herein for competition will be under the control of the Horse Show Manager, but the horse show manager will in no case be responsible for any loss or damage that may occur, and it shall be a condition of entry that each exhibitor shall hold the individual horse shows and the officials, employees, directors, officers, sponsoring entities, Sonoma Horse Park, Riverside Equestrian Center, Giant Steps, and its employees, directors, officers, sponsoring entities of each horse show & the facilities at which each horse show is held blameless for any loss or accident to his horse(s), employee(s), or equipment which may occur from sickness, fire or other cause. All owners and Competitors shall be responsible for any damage incurred by them, their agents or employees to stalls, buildings, and other properties on the show grounds, and shall be billed accordingly.

****ENTRY CLOSING DATE: MONDAY, JUNE 29, 2026****

ENTRY PROCEDURES: Entries must be submitted online at showgroundslive.com/shp. For each horse entered, non-refundable \$450 Deposit Fee will be charged to provided credit card. A 3.5% credit card fee will be applied to all credit card transactions and is non-refundable once the card has been processed. Entries must be received by the entry deadline on June 29, 2025. Entries received after June 29TH will be late and subject to a late entry fee. Online entry forms must be filled out completely, including all classes entered, signatures and organizational membership numbers. Competitors are responsible for their errors and those of their agents in making out entry blanks. In all cases the description on entry blank must fully identify the horse. An entry with incomplete information for horse, owner, rider or trainer such as a horse entered as "Entry" or "TBD" or any such derivative, will be subject to a \$75 Incomplete Entry Fee. An entry with missing USEF/USHJA numbers or signatures is also subject to this fee. Classes may only be entered or declared by using a Class Number. Horses entered without classes may be put on a waiting list for classes if rings are fully subscribed. GR907.1 STALLS AND CLASSES MAY BECOME FULLY SUBSCRIBED BEFORE THE CLOSE OF ENTRIES.

ENTRY REQUIREMENTS:

- Entries must be submitted online at showgroundslive.com/shp
- All horses on show grounds must be registered on an entry blank including horses not entered in classes. One entry blank per horse.
- Entry forms must be complete with owner, riders, trainers and payee information including association membership numbers.
- Signatures of owner, riders, trainer and parent or guardian of minor competitors.
- Owner's mailing address and Social Security number
- Date of birth of junior and amateur riders
- Payment for \$450 Deposit Fee.

POST ENTRY FEES:

- Entries received after Closing Date: \$75 Late Entry Fee (*until July 3rd*)
- Entries received after June 29th: \$150 Late Entry Fee (*after July 3rd*)
- Entries with incomplete information after Closing Day: \$75 Incomplete Entry Fee

ADD/SCRATCH FEES:

- Scratch show after Closing Date: \$100 Show Scratch Fee + \$450 Deposit Fee (*after June 29th*)
- Same-day Add: \$25 Per Class
- Rode Did Not Enter (RDNE): \$50 Per Class

For Show Scratches, contact: angelica@westpalmsevents.com Any complete Show Scratch must be made in writing in the Show Office on an official form, by letter, or via email, and received prior to the start of the applicable class or show. Classes may be added up until 4:00 pm the day prior to the day of the class. Same day adds are only allowed when notice for that specific arena is posted at the Show Office. Unless otherwise posted at the office, it should be assumed there are no same day adds. Any changes made after 4:00 pm, if accepted, will be considered SAME DAY and will fall under the policy for same day adds and scratches. There will be a \$25 per transaction fee for same day adds. Horses and riders who go in a class without entering in the Show Office will pay a \$50 RDNE Fee. All class scratches must be received in the Show Office before the start of the class in writing to be considered for a class refund. Scratching at the gate or via phone call does not constitute an official scratch and will NOT be considered once a class or division begins, it may not be scratched, except for a Vet Scratch. If a Vet Scratch, the horse must be scratched in the Show Office on the day of the class and the Official Show Vet's Certificate must be received that day. A class that has been closed may not be scratched. Show Management reserves the right to limit entries at its discretion.

SHOW FEES: All horses entered in the Show must pay a mandatory \$135 Office/Facility Fee and a mandatory \$65 Medical Services Fee. All entries competing in jumper classes at 1.20m or higher must pay a \$140 Nomination Fee. All other jumper entries, and all hunter and equitation entries must pay a \$115 Nomination Fee. Outreach entries must pay a \$85 Nomination Fee. All horses entered in the Show must pay a mandatory \$55 Manure Disposal Fee. Entries who compete without reserving a stall and who trailer-in to compete, will be charged a \$150 Trailer-In Fee (per day). Horses occupying show stalls that are not entered in the show will be subject to a \$200 Non-Showing Horse Fee (exempt from USHJA/USEF Fees, Nomination and Office Fees).

ASSOCIATION FEES: Each horse will be charged a \$23 USEF Fee per competition (\$15 Drugs and Medication, \$8 USEF), a \$14 CDFA Fee for Drug Screening, and a non-refundable \$10 USHJA Fee (or a \$5 USHJA Fee if horse is only entered in Outreach classes). Horses entered in Grand Prix are required to pay the \$35 IHP Fee up to a total of the cap of \$420 per competition year. For those exhibitors who are not current members of the USHJA a \$30 Show Pass will be added to your entry. Riders and Owners will only be allowed ONE USEF Show Pass per calendar year. The show pass must be paid from your USEF account on your member dashboard. Anyone listed as a Trainer or Coach (including Parents) must be active USEF members. In addition each horse, regardless of whether the owner is a current member of the USEF or USHJA must pay a \$75 Lifetime Horse Registration Fee.

STABLING: 10' x 10' stalls will be available for \$450 Stall Fee. 10' x 12' stalls and tack rooms will be available for \$550 Stall Fee. 10' x 10' stalls are either wood with top and bottom doors or 1/4 inch puck board with a single door. 10' x 12' stalls are 1/4 inch puck board with a single door. All stalls have dirt floors. No bedding included. Water buckets and hoses must be provided by the exhibitor. It is strictly forbidden to remove stall doors. Competitors are responsible for the condition of the stalls upon departure. Anyone dismantling stalls or causing damage to a stall will be fined \$600 per stall. Requests for stalls for horses not entered in the show or for tack, feed or grooming may be reduced by management and refunds given, if there is a shortage of stalls. Trainers will be responsible for payment of all stalls requested. Credit Card required to hold stalls.

FEED & BEDDING: All feed orders received in Show Office by NOON will be delivered the same day. Online feed orders will be closed starting on Friday at 2:00 pm. Any further feed orders after Friday at 2:00 pm must be completed in person at the show office. Saturday feed orders must be in by NOON. No deliveries on Sunday. All feed orders must state barn and stall numbers. Feed and bedding will not be delivered without a signed open check or credit card on file at the Show Office. Any discrepancies in orders must be reported to the Show Office the day of delivery or refunds cannot be guaranteed. Order feed online at showgroundslive.com/shp

NUMBERS: Management will provide a number card for each competitor which shall be worn on the rider's back for hunters and equitation, and on the saddle pad or tack for jumpers so it is clearly visible to the judge at all times when in competition. Riders wearing the wrong number or no number at all may be eliminated from

the class by the judge. An open check or credit card is required at time of check in before numbers will be issued. Numbers must accompany all entered horses at all times on competition grounds.

TRAINER SPLITS: Trainers may split show charges for miscellaneous items to their clients. Splits will be accepted until NOON on the Friday of a show week. No exceptions will be made. Only items billed by the show directly can be split. Splits will revert back to the trainer for payment if uncollected.

CLOSE OUT: Entries not closed out by 8:00 am on the Tuesday following the show will be charged a \$100 Late Close Out Fee.

REFUNDS: Request for a refund of the deposit must be submitted in writing and received BEFORE the Closing Date of entries and a \$50 Office Fee will be deducted. The \$450 Deposit Fee is not refundable under any condition after the close of entries. Credit card fees are non-refundable at any time after the card has been processed. A competitor may replace one entry with another horse. If no replacement is made or note is received, competitors are responsible for the full stall fees and a \$50 Office Fee. Stalls are non-refundable. In all cases, a \$50 Office Fee will still be applicable. Approved refunds will be issued 30 days post the end date of the horse show in question.

RETURNED CHECKS/CREDIT CARD CHARGE-BACKS: Checks returned by the bank or credit card charge-backs for any reason are regarded as a serious offense and will be handled in the following procedure. \$100 or 10% of the amount of the check will be assessed for each returned check or charge-back, whichever is greater. Accounts will be given 10 days to be paid in full with cash or cash equivalent, or they will be turned into USEF and PCHA for further disciplinary action. Checks will not be deposited a second time. In the case that the debt is not cleared within 30 days of the conclusion of the show, all prize money will be forfeited.

UNPAID CHARGES: All bills for show entry fees, veterinary and farrier services, photographer, food concessionaire, etc. are due and payable during the Show. If Show Management or officials (i.e. farrier, veterinarian, photographer, food concessionaire, etc.) must bill an exhibitor for unpaid charges, a \$100 Billing Fee will be added to the amount due.

TIME SCHEDULE/POSTED ORDER: Each evening, time schedule for the next day's schedule is available. This time schedule will be strictly adhered to. Trainer, exhibitor or representative must tell the paddock steward of possible ring conflicts so arrangements can be made to accommodate the rider and time schedule. All Hunter and Jumper orders will be drawn according to USEF Rule JP112. Posted orders for Grand Prix, Hunter and Jumper Classics, Hunter and Jumper Derbies will be strictly adhered to. All Show Manager decisions will be final.

JUMPER GRAND PRIX & CLASSICS: Grand Prix: Horses must declare by 3:00 pm the day before the Grand Prix, Derby & Classics. A late fee will be charged if entered after 3:00 pm the day before class is held. All scratches must be received in the Show Office before the start of the class in writing to be considered for a class refund. Scratch Fee will still apply (see Class List for classics & special class scratch fees).

HUNTER CLASSICS: Horses entered the day of the 1st round of the Classic will pay a late entry fee, and must be entered in the Classic before the start of the 1st round. To be eligible, horses must have entered, shown and completed the course in at least (2) Hunter classes. Classics scratched day of the 1st round and thereafter, will be charged Classic's scratch fee (see Class List for Classic scratch fee).

PRIZE MONEY: Prize money not deducted from show bill will be made payable to owner listed on entry form and mailed within 30 days after the show. PRIZE MONEY WILL NOT BE MAILED UNLESS THE OWNER'S SOCIAL SECURITY NUMBER IS LISTED ON ENTRY BLANK. PRIZE MONEY CHECKS NOT CASHED AFTER 90 DAYS WILL HAVE A STOP PAYMENT PLACED ON THEM AND EXHIBITOR WILL FORFEIT PRIZE MONEY. Foreign competitors are advised that the U.S. Internal Revenue Service requires sporting events to withhold 30% of prize money won in the U.S. Foreign competitors should apply for a U.S. Social Security number and will be asked to complete a W-8 form prior to Sonoma Horse Park issuing prize money won. Division Prize Money Breakdown: 1st - 30%, 2nd - 22%, 3rd - 15%, 4th - 10%, 5th - 7%, 6th - 6%, 7th - 5%, 8th - 5%. SHP Spring Classic I Hunter Prize Money: 2025 Offered: \$38,300; 2025 Guaranteed: \$5,000; 2024 Awarded: \$22,098.20 SHP Spring Classic II Hunter Prize Money: 2025 Offered: \$28,300; 2025 Guaranteed: \$5,000; 2024 Awarded: \$21,140.00.

ADD-BACK: In classes with add-back, prize money is computed from the number of horses that actually show.

STATEMENT OF HEALTH/VACCINATIONS, PER GR845 EQUINE VACCINATION RULE: At Federation licensed competitions, horses entering the grounds must be accompanied by documentation of Equine Influenza Virus and Equine Herpes Virus (Rhinopneumonitis) vaccinations within six months prior to entering the stables. Horses not in compliance with this rule may be required to leave the competition grounds upon request by Show Management. Competitors may be asked to provide proof of vaccination upon check-in or prior to entering the property.

EQUINE HEALTH REQUIREMENTS: Equine Health Requirements will be enforced. All horses (competing or not) that enter the grounds are required to present the Required Health Entry Requirements, including the Event Participation Declaration and Proof of Vaccination. All horses are subject to examination by SHP officials/designated representatives and/or state officials (collectively "officials") for determining whether such animals are, have been infected/exposed, or are likely to become infected with an infectious or contagious disease. If after such examination, officials have reason to believe that an animal's health condition places other animals at risk, such officials, at their sole discretion, may quarantine such animal (and others that may have been infected/exposed) or, if appropriate, require that such animals be transported off the grounds. All participants agree to fully cooperate with event officials and abide by their decisions and instructions. Failure to comply shall be grounds for immediate expulsion and potential disciplinary action by organization, state/local or federal animal health officials. All competitors are encouraged to review the equine health entry/transport requirements of the destination state prior to entry. Additional information can be obtained from the State Vet Office. Please refer to sonomahorsepark.com and the Show Office for current Equine Health and Biosecurity measures.

ARRIVAL & DEPARTURE: Horses and grooms may arrive & depart within the days listed below:

SHP SPRING CLASSIC I • MAY 13 - 17, 2026

Arrive no earlier than Monday, 8:00 am, May 11, 2026
Departure by Sunday, 6:00 pm, May 17, 2026

SHP SPRING CLASSIC II • MAY 20 - 24, 2026

Arrive no earlier than Monday, 8:00 am, May 18, 2026
Departure by Sunday, 6:00 pm, May 24, 2026

SHP SUMMER CLASSIC • JULY 22 - 26, 2026

Arrive no earlier than Monday, 8:00 am, July 20, 2026
Departure by Sunday, 6:00 pm, July 26, 2026

GIANT STEPS CHARITY CLASSIC • JULY 29 - AUGUST 2, 2026

Arrive no earlier than Monday, 8:00 am, July 27, 2026
Departure by Sunday, 7:00 pm, August 2, 2026

SHP FALL CLASSIC I • SEPTEMBER 2 - 6, 2026

Arrive no earlier than Monday, 8:00 am, Aug 31, 2026
Departure by Sunday, 6:00 pm, Sept 6, 2026

SHP FALL CLASSIC II • SEPTEMBER 9 - 13, 2026

Arrive no earlier than Monday, 8:00 am, Sept 7, 2026
Departure by Sunday, 6:00 pm, Sept 13, 2026

PARKING: Horse trailers and autos will be parked in designated areas. No autos allowed in the barn aisles. Any autos, including but not limited to, cars, box trucks, trailers, etc that are parked in barn aisles will be towed and Horse Show Management will hold no liability for any damage caused

LIMITED RV SPACE: Includes electricity, water and two pump-out services. 30 amps: \$525/week. 50 amps: \$650/week. There are limited RV spaces available. RVs must park in designated area with a permit provided by the show. RVs will be pumped on Thursday and Saturday. Reservations are taken on a paid first come-first served basis. Completed RV Reservation Form must be received in advance to guarantee a space. Cancellations after May 1, 2026 will be subject to a \$200 RV Cancellation Fee. Power for RVs is not turned on prior to Monday, so you must have advanced approval to arrive before Monday. Download and submit RV Reservation Form at sonomahorsepark.com/rated-shows. For questions, email angelica@westpalmsevents.com

MOTORIZED VEHICLES: Minors who do not have a valid driver's license which allows them to operate a motorized vehicle in the state in which they reside will not be permitted to operate a motorized vehicle of any kind, including, but not limited to, golf carts, motorcycles, scooters, or farm utility vehicles, on the competition grounds of licensed competitions. Minors who have a valid temporary license may operate the above described motorized vehicles as long as they are accompanied by an adult with a valid driver's license. The parent/legal guardian or individual who signs the entry blank as a parent or guardian of a minor operating a motorized vehicle in violation of this rule are solely responsible for any damages, claims, losses or actions resulting from that operation. Violations of this rule will be cause for penalties against those responsible for the child committing the offense. Wheelchairs and other mobility assistance devices for individuals with disabilities are exempt from this rule. The unsafe use of personal electronic transport devices, as determined by the competition officials and management in their sole discretion, that do not require a driver's license to operate, including but not limited to segways, hover boards, and single wheeled scooters is prohibited on competition grounds. Operating such devices in areas where people gather may be deemed "unsafe use" if there is a risk of harm to others. If the operator of the device is a minor, the parent/legal guardian or individual who signs the entry blank as a parent or guardian of a minor operating the device in violation of this rule is accountable and may be subject to penalties. Wheelchairs and other mobility assistance devices for individuals with disabilities are exempt from this rule.

Effective immediately all persons under the age of 18 MUST have a helmet on to operate a bicycle or E bike. In addition ALL persons operating E bikes / bicycles/golf cart or any vehicle MUST respect the 5 MPH speed limit at the horse show.

MEASUREMENT CARDS: Horses/Ponies showing in Junior Hunter, Pony Hunter, Children's Pony Hunter or Pony Jumpers must present their USEF Measurement card to the Show Secretary, or be measured at the show, before the horse's number will be released. Foreign measurement cards are not acceptable as proof of measurement.

MEDICAL WASTE: Needles must be placed in the proper receptacles. Receptacles are provided by management and are located in each barn aisle. Anyone found in violation will be fined \$75 per needle/syringe or other penalties deemed necessary by show management. USEF GR1210.4

HARD HATS AND ATTIRE, USEF GR801: will be strictly enforced. It is compulsory for all persons at Federation licensed hunter, jumper or hunter/ jumper competitions when mounted anywhere on the competition grounds, to wear properly fastened protective headgear which meets or exceeds ASTM (American Society for Testing and Materials)/SEI (Safety Equipment Institute) standards for equestrian use and carries the SEI tag. It must be properly fitted with harness secured. GR801.2 All competitors are required to wear shoes or boots with a riding heel whenever mounted on horseback on the grounds. GR801.9

COURSES: Courses may consist of any combination of the following: Brush, Gate, Oxers, Panels, Post & Rails, Banks, Ditches, Coups & Liverpools. The horse show management reserves the right to adjust fence heights or spreads in jumper classes as competition warrants.

ARENAS: Grand Prix Arena: Textile 350' x 220'; Main Hunter Arena: Textile 275' x 165'; Jumper 2 Arena: Textile 300' x 160'; Hunter 2 Arena: Textile 260' x 160'; Hunter 3 Arena: Textile 240' x 140'; Hunter 4 Arena: Textile 240' x 150'.

SCHOOLING SUPERVISION: Please be advised that the starters are schooling supervisors and have absolute authority to scratch riders who do not follow USEF schooling rules. They can scratch riders without going through the USEF Steward or the Show Manager.

LUNGING: Lunging is NOT permitted in the following arenas: Grand Prix Arena, Jumper 2 Arena, Main Hunter Arena, Hunter 2 Arena, Hunter 3 Arena and Hunter 4 Arena. The trainer will be fined \$500 each time anyone is caught lunging in any of these arenas. The \$500 penalty fee will be added to trainer's show bill and is expected to be paid upon check out.

DOGS: Dogs are not permitted to be loose on competition grounds and must be held on a leash or otherwise restrained. Dog owners are solely responsible for any damages, claims, losses or actions resulting from their dogs' behaviors. Dog owners failing to comply with this rule will be issued a Yellow warning card and may be subject to penalty under Chapter 7. See USEF GR1301.6 Loose dogs will be picked up and detained until the owner has paid a \$250 Loose Dog Fine. A second offense may cause the owner to be barred from showing and expelled from the show grounds. Refusal to pay the fine will bar the owner from further participation in the horse show and the owner will not be entitled to any refund of entry or stabling fees paid or due. Management reserves the right to call Animal Control to have an animal removed from the premises.

PHOTOGRAPHER FEE: For a flat fee of \$100, Sonoma Horse Park provides exhibitors with online access to all professional photos taken of them during the show.

Exhibitors may access their show photos by following the link on <https://www.sonomahorsepark.com/rated-shows>

INSURANCE: All owners and competitors are personally responsible for damages to third parties caused by themselves, their employees, their agents, or their animals. They are therefore strongly advised to take out third-party insurance providing full coverage for participation in equestrian events at home and abroad, and to keep the policy up to date.

USHJA ZONE 10 SPECIFICATIONS: ushja.org/zones-affiliates/zone-10/specifications/

HOSPITALS:

- **Nearest Emergency Care Hospital:** Novato Community Hospital- Sutter Health, located at 180 Rowland Way Novato, CA 94945. This Hospital is 12 miles (20 minutes drive time) from Sonoma Horse Park.
- **Nearest Trauma Level 1 Hospital:** Santa Rosa Memorial Hospital, located at 1165 Montgomery Dr. Santa Rosa, CA 95405. This Hospital is 29 miles (35 minutes drive time) from Sonoma Horse Park.

MAILING ADDRESS: UPS & FedEx shipments: Sonoma Horse Park, 7600 Lakeville Hwy, Petaluma, CA 94954. Attention: Horse Show Office

DIRECTIONS TO SONOMA HORSE PARK:

- 101 North: From San Francisco/Marin: Exit CA-37 toward Napa/Vallejo (5.7 miles). Turn left at Lakeville (2 miles). 7600 Lakeville Hwy is on the left.
- 101 South: From Santa Rosa: Exit CA-116 East toward Napa/Sonoma (.2 miles). Turn left at Lakeville Hwy (9 miles). 7600 Lakeville Hwy is on the right.
- I-80: Sacramento/East Bay: Exit CA-37 toward Napa (16.3 miles). Turn right at Lakeville Hwy (2 miles). 7600 Lakeville Hwy is on the left.

HORSE SHOW CHAMPIONSHIPS

1.30m Open Jumpers	.85m Junior Jumpers	USHJA 2'6 Hunters	Low Child/Adult Hunters
1.20m Open Jumpers	.85m Amateur Jumpers	USHJA 2'3 Hunters	Low Adult Hunters
1.10m Open Jumpers	.80m Jr/Am Jumpers	USHJA 2' Hunters	Modified Children's Hunters
1.00m Open Jumpers	.70m Jr/Am Jumpers	SHP Hunters 3'	Modified Adult Hunters
.90m Open Jumpers	High Performance Hunters 3'9	SHP Hunters 2'6	Small Pony Hunters
.80m Open Jumpers	Green Hunters 3'9	Large Junior Hunters 3'6	Medium Pony Hunters
1.30m-1.35m 7 Year Old Jumpers	Green Hunters 3'6	Small Junior Hunters 3'6	Large Pony Hunters
1.20m-1.25m 6 Year Old Jumpers	High Perform Conformation Hunters 3'9	Large Junior Hunters 3'3	Sm/Med Green Pony Hunters
1.00m-1.15m 5 Year Old Jumpers	Green Conformation Hunters 3'6	Small Junior Hunters 3'3	Large Green Pony Hunters
1.40m JR/AM Jumpers	Performance Hunters 3'6	AO Hunters 18 - 35 3'6	Sm/Med Child Pony Hunters
1.30m JR/AM Jumpers	Performance Hunters 3'3	AO Hunters 36 & Over 3'6	Large Child Pony Hunters
1.20m JR/AM Jumpers	Green Hunters 3'3	AO Hunters 18 - 35 3'3	Equitation 18 & Over
1.10m Junior Jumpers	Green Hunters 3'	AO Hunters 36 & Over 3'3	Equitation 15 - 17
1.10m Amateur Jumpers	Young Hunters 7 & Under	JR/AM Modified Hunters	Equitation 14 & Under
1.00m Junior Jumpers	Young Hunters 6 & Under	Children's Hunters 13 & Under	Low Child/Adult Equitation 2'9
1.00m Amateur Jumpers	Young Hunters 5 & Under	Children's Hunters 14 - 17	Mod. Child/Adult Equitation 2'9
.95m Junior Jumpers	USHJA 3' Hunters	Adult Amateur Hunters 18 - 35	Sm/Med Child Pony Equitation
.95m Amateur Jumpers	USHJA 2'9 Hunters	Adult Amateur Hunters 36 & Over	Large Child Pony Equitation

OPPORTUNITY SERIES CHAMPIONSHIPS

Child Training Hunters 17 & U	Short Stirrup Hunters 17 & U	Child Cross Rail Hunters 17 & U	Child Poles Hunters (W/T) 17 & U
Child Training Equitation 17 & U	Short Stirrup Equitation 17 & U	Child Cross Rail Equitation 17 & U	Child Poles Equitation (W/T) 17 & U
Adult Training Hunters 18 & O	Long Stirrup Hunters 18 & O	Adult Cross Rail Hunters 18 & O	Adult Poles Hunters (W/T) 18 & O
Adult Training Equitation 18 & O	Long Stirrup Equitation 18 & O	Adult Cross Rail Equitation 18 & O	Adult Poles Equitation (W/T) 18 & O

AWARDS & POINTS

CLASSIC PRIZE MONEY BREAKDOWNS

Prize Money	1st	2nd	3rd	4th	5th	6th	7th	8th	9th	10th
\$24,999	\$7,500	\$5,500	\$3,450	\$2,250	\$1,650	\$1,300	\$1,100	\$900	\$750	\$599
\$10,000	\$3,000	\$2,200	\$1,450	\$950	\$700	\$600	\$550	\$550	\$550	\$550
\$7,500	\$2,250	\$1,400	\$900	\$700	\$625	\$575	\$525	\$525		
\$5,000	\$1,500	\$975	\$600	\$450	\$400	\$375	\$350	\$350		
\$4,000	\$1,200	\$750	\$425	\$370	\$340	\$315	\$300	\$300		
\$3,500	\$1,000	\$600	\$375	\$350	\$325	\$300	\$275	\$275		
\$3,000	\$800	\$450	\$350	\$325	\$300	\$275	\$250	\$250		
\$2,500	\$700	\$300	\$285	\$275	\$250	\$240	\$225	\$225		
\$2,000	\$450	\$265	\$240	\$225	\$215	\$205	\$200	\$200		
\$1,500	\$440	\$240	\$200	\$175	\$135	\$110	\$100	\$100		
\$1,000	\$300	\$210	\$120	\$95	\$80	\$70	\$60	\$60		
\$500	\$150	\$110	\$75	\$50	\$35	\$30	\$25	\$25		

CLASSICS

Trophy to 1st place. Ribbons to 10th place

CLASSES

Trophy to 1st place. Ribbons to 8th place

POINTS

1st: 10, 2nd: 6, 3rd: 4, 4th: 2, 5th: 1, 6th: .5

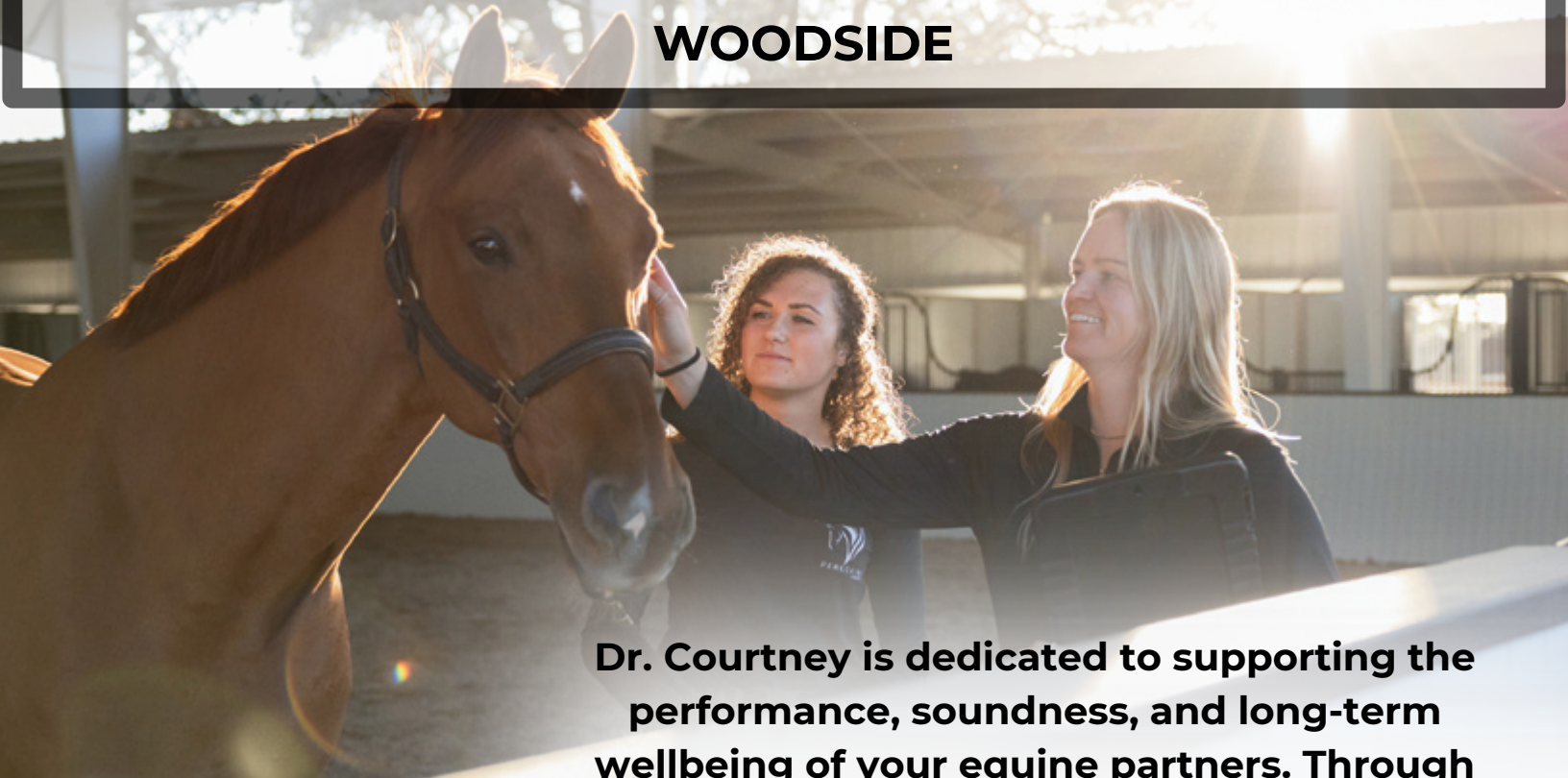
MODEL

1st: 5, 2nd: 3, 3rd: 2, 4th: 1, 5th: .5, 6th: .25

BONUS POINTS

1st: 15, 2nd: 9, 3rd: 6, 4th: 3, 5th: 2, 6th: 1

**SERVING SONOMA & MARIN COUNTIES • EAST BAY •
WOODSIDE**



Dr. Courtney is dedicated to supporting the performance, soundness, and long-term wellbeing of your equine partners. Through advanced diagnostics, progressive therapies, and thoughtful case management, we help horses stay comfortable, competitive, and performing at their best.



(707) 244-3329 • INFO@PEREGRINEEQUINE.COM





FEDERATION ENTRY AGREEMENT

By entering a Federation-licensed Competition and signing this entry blank as the Owner, Lessee, Trainer, Manager, Agent, Coach, Driver, Rider, Handler, Vaultler or Longeur and on behalf of myself and my principals, representatives, employees and agents, I agree that I am subject to the Bylaws and Rules of the United States Equestrian Federation, Inc. (the "Federation") and the local rules of _____(Competition). I agree to be bound by the Bylaws and Rules of the Federation and of the competition. I will accept as final the decision of the Hearing Committee on any question arising under the Rules, and agree to release and hold harmless the competition, the Federation, their officials, directors and employees for any action taken under the Rules. I represent that I am eligible to enter and/or participate under the Rules, and every horse I am entering is eligible as entered. I also agree that as a condition of and in consideration of acceptance of entry, the Federation and/or the Competition may use or assign photographs, videos, audios, cable - casts, broadcasts, internet, film, new media or other likenesses of me and my horse taken during the course of the competition for the promotion, coverage or benefit of the competition, sport, or the Federation. Those likenesses shall not be used to advertise a product and they may not be used in such a way as to jeopardize amateur status. I hereby expressly and irrevocably waive and release any rights in connection with such use, including any claim to compensation, invasion of privacy, right of publicity, or to misappropriation. The construction and application of Federation rules are governed by the laws of the State of New York, and any action instituted against the Federation must be filed in New York State. See GR907.4.

If not currently a USEF Active Competing member or Subscriber and competing only in classes that are exempt from membership requirements, I acknowledge and agree that I will be enrolled at no cost as a USEF Fan and my USEF Fan Account will continue to annually automatically renew unless and until USEF determines in its sole discretion to terminate my Fan account. Additionally, I acknowledge that the benefits of a USEF Fan are subject to change without notice. I acknowledge that I may opt out at any time by going to My USEF Dashboard or calling (859) 810-8733.

BY SIGNING BELOW, I AGREE that I have read, understand, and agree to be bound by all applicable Federation Bylaws, rules, and policies including the USEF Safe Sport Policy and Minor Athlete Abuse Prevention Policies (MAAPP) as published at www.usef.org, as amended from time to time, as well as all terms and provisions of this Prize List. If I am signing and submitting this Agreement electronically, I acknowledge that my electronic signature shall have the same validity, force and effect as if I affixed my signature by my own hand.

RIDER/DRIVER/HANDLER/VAULTER/LONGEUR (mandatory)

Signature: _____

Print Name: _____

TRAINER (mandatory)

Signature: _____

Print Name: _____

OWNER/AGENT (mandatory)

Signature: _____

Print Name: _____

COACH (if applicable)

Signature: _____

Print Name: _____

Parent/Guardian Signature: (Required if Rider/Driver/Handler/Vaultler/Longeur is a minor) _____

Print Parent//Guardian Name: _____ Emergency Contact Phone No. _____

Is Rider/Driver/Vaultler a U.S. Citizen: Yes No



WAIVER AND RELEASE OF LIABILITY, ASSUMPTION OF RISK AND INDEMNITY AGREEMENT

For and in consideration of United States Equestrian Federation, Inc. dba US Equestrian ("USEF") allowing me, the undersigned, to participate in any capacity (including as a rider, driver, handler, vaulter, longeur, lessee, owner, agent, coach, official, trainer or volunteer) in a USEF sanctioned, licensed or approved event or activity, including but not limited to equestrian clinics, practices, shows, competitions and related or incidental activities and _____ ("USEF Event" or "USEF Events"); I, for myself, and on behalf of my spouse, children, heirs and next of kin, and any legal and personal representatives, executors, administrators, successors,, and assigns, hereby agree to and make the following contractual representations pursuant to this Agreement (the "Agreement"):

A. RULES AND REGULATIONS: I hereby agree that I have read, understand, and agree to be bound by all applicable Federation Bylaws, rules, and policies including the USEF Safe Sport Policy and Minor Athlete Abuse Prevention Policies (MAAPP) as published at www.usef.org, as amended from time to time.

B. ACKNOWLEDGMENT OF RISK: I knowingly, willingly, and voluntarily acknowledge the inherent risks associated with the sport of equestrian and know that horseback riding and related equestrian activities are inherently dangerous, and that participation in any USEF Event involves risks and dangers including, without limitation, the potential for serious bodily injury (including broken bones, head or neck injuries), sickness and disease (including communicable diseases), trauma, pain & suffering, permanent disability, paralysis and death; loss of or damage to personal property (including my mount & equipment) arising out of the unpredictable behavior of horses; exposure to extreme conditions and circumstances; accidents involving other participants, event staff, volunteers or spectators; contact or collision with other participants and horses, natural or manmade objects; adverse weather conditions; facilities issues and premises conditions; failure of protective equipment (including helmets); inadequate safety measures; participants of varying skill levels; situations beyond the immediate control of the USEF Event organizers and competition management; and other undefined, not readily foreseeable and presently unknown risks and dangers ("Risks").

EQUINE ACTIVITY LIABILITY ACT WARNING:

CAUTION: HORSEBACK RIDING AND EQUINE ACTIVITIES CAN BE DANGEROUS. RIDE AT YOUR OWN RISK.

Under the laws of most States, an equine activity sponsor or equine professional is not liable for any injury to, or the death of, a participant in equine activities resulting from the inherent risks of equine activities.

C. ASSUMPTION OF RISK: I understand that the aforementioned Risks may be caused in whole or in part or result directly or indirectly from the negligence of my own actions or inactions, the actions or inactions of others participating in the USEF Events, or the negligent acts or omissions of the Released Parties defined below, and I hereby voluntarily and knowingly assume all such Risks and responsibility for any damages, liabilities, losses, or expenses that I incur as a result of my participation in any USEF Events. I also agree to be responsible for any injury or damage caused by me, my horse, my employees or contractors under my direction and control at any USEF Event.

D. WAIVER AND RELEASE OF LIABILITY, HOLD HARMLESS AND INDEMNITY: In conjunction with my participation in any USEF Event, I hereby release, waive and covenant not to sue, and further agree to indemnify, defend and hold harmless the following parties: USEF, USEF Recognized Affiliate Associations, the United States Olympic & Paralympic Committee (USOPC), USEF clubs, members, Event participants (including athletes/riders, coaches, trainers, judges/officials, and other personnel), the Event owner, licensee, and competition managers; the promoters, sponsors, or advertisers of any USEF Event; any charity or other beneficiary which may benefit from the USEF Event; the owners, managers, or lessors of any facilities or premises where a USEF Event may be held; and all directors, officers, employees, agents, contractors, and volunteers of any of the aforementioned parties (**Individually and Collectively, the "Released Parties" or "Event Organizers"**), with respect to any liability, claim(s), demand(s), cause(s) of action, damage(s), loss, or expense (including court costs and reasonable attorney fees) of any kind or nature ("**Liability**") which may arise out of, result from, or relate in any way to my participation in the USEF Events, including claims for Liability caused in whole or in part by the negligent acts or omissions of the Released Parties.

E. COMPLETE AGREEMENT AND SEVERABILITY CLAUSE: This Agreement represents the complete understanding between the parties regarding these issues and no oral representations, statements or inducements have been made apart from this Agreement. If any provision of this Agreement is held to be unlawful, void, or for any reason unenforceable, then that provision shall be deemed severable from this Agreement and shall not affect the validity and enforceability of any remaining provisions.

I HAVE CAREFULLY READ THIS DOCUMENT IN ITS ENTIRETY, UNDERSTAND ALL OF ITS TERMS AND CONDITIONS, AND KNOW IT CONTAINS AN ASSUMPTION OF RISK, RELEASE AND WAIVER FROM LIABILITY, AS WELL AS A HOLD HARMLESS AND INDEMNIFICATION OBLIGATIONS.

By signing below, I (as the participant or as the Parent/Legal Guardian of the minor identified below) hereby accept and agree to the terms and conditions of this Agreement in connection with my (or the minor's) participation in any USEF Event. If, despite this Agreement, I, or anyone on my behalf or the minor's behalf, makes a claim for Liability against any of the Released Parties, I will indemnify, defend and hold harmless each of the Released Parties from any such Liabilities as the result of such claim.

The parties agree that this agreement may be electronically signed. The parties agree that the electronic signatures appearing on this agreement are the same as handwritten signatures for the purposes of validity, enforceability, and admissibility.

RIDER/DRIVER/HANDLER/VAULTER/LONGEUR OWNER TRAINER OFFICIAL STAFF VOLUNTEER COACH (IF APPLICABLE)

Signature: _____ Date: _____ Print Name: _____

Parent/Guardian Signature: (Required if Rider/Driver/Handler/Vaulter/Longeur is a minor) _____ Date: _____

Print Parent//Guardian Name: _____ Emergency Contact Phone No. _____



NORCAL HUNTER JUMPER ASSOCIATION MEMBERSHIP APPLICATION

PO BOX 243 · DAVIS, CA 95617

PO Box 243
Davis, CA
95617

MEMBER INFORMATION

NEW
 RENEWAL

ANNUAL \$75
 THREE YEAR \$180
 LIFE \$650

JUNIOR
 AMATEUR
 PROFESSIONAL

I do not want NorCal to release my email address.

NAME _____ ADDRESS _____ CITY _____ STATE _____ ZIP _____

E-MAIL _____

TELEPHONE _____ CELL PHONE _____

DOB: (REQUIRED) _____ TRAINER _____

HORSE 1

ANNUAL \$50
 LIFE \$150
 NAME CHANGE \$5
 TRANSFER OF OWNERSHIP \$5

CHECK SIZE FOR PONY

SMALL
 MEDIUM
 LARGE

*HORSE NAME _____ USE# _____

FOR TRANSFER, PLEASE LIST FORMER OWNER'S NAME
*HORSE REGISTRATION MUST BE PAID BEFORE POINTS CAN ACCRUE.

HORSE 2

ANNUAL \$50
 LIFE \$120
 NAME CHANGE \$5
 TRANSFER OF OWNERSHIP \$5

CHECK SIZE FOR PONY

SMALL
 MEDIUM
 LARGE

*HORSE NAME _____ USE# _____

FOR TRANSFER, PLEASE LIST FORMER OWNER'S NAME
*HORSE REGISTRATION MUST BE PAID BEFORE POINTS CAN ACCRUE.

PAY BY CREDIT CARD

NAME _____

CCH _____ MUST ENTER FOR PAYMENT TO BE PROCESSED >>> EXP. DATE _____

BILLING ADDRESS _____ ZIP _____



Pacific Coast Horse Shows Association
P.O. Box 5570, Glendale, CA 91221
(818)842-8194
pcha@pchashows.com

TODAYS DATE _____

Membership Application

_____ NEW _____ RENEWAL

_____ SENIOR: \$85.00 _____ JUNIOR: \$85.00
_____ SENIOR FOR 3 YEARS: \$230.00 _____ JUNIOR FOR 3 YEARS: \$230.00

CHECK ALL THAT APPLY: _____ PROFESSIONAL _____ AMATEUR _____ HUNTER/JUMPER _____ WESTERN
_____ STEWARD _____ SHOW MANAGER _____ SHOW CONTACT

NAME _____

DATE OF BIRTH REQUIRED _____

ADDRESS _____

CITY/STATE _____ ZIP _____

TELEPHONE _____ E-MAIL _____

NAME OF TRAINER (MUST BE A MEMBER) _____

CREDIT CARD _____ SECURITY CODE _____ CHECK# _____

EXPIRATION DATE _____

NAME ON CARD _____

BILLING ADDRESS _____

RIDER, HORSE, OWNER AND TRAINER MUST ALL BE MEMBERS TO COMPETE FOR POINTS



Pacific Coast Horse Shows Association
P.O. Box 5570, Glendale, CA 91221
(818)842-8194
pcha@pchashows.org

HORSE REGISTRATION

Horse must be member to compete for year end points

_____ YEARLY REGISTRATION: \$50.00 _____ LIFETIME REGISTRATION: \$150.00

_____ HUNTER/JUMPER _____ WESTERN

SHOW NAME OF HORSE _____

COLOR _____ SEX _____ HT _____ YR. FOALED _____ BREED _____

OWNER OF HORSE (MUST BE A MEMBER) _____

_____ SHOW NAME CHANGE: \$10.00

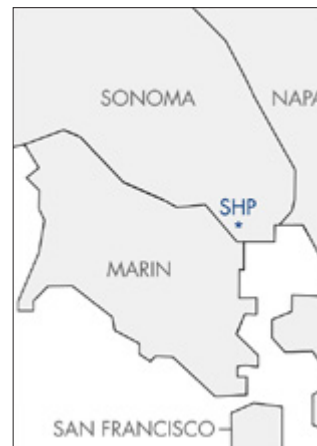
FORMER NAME _____

_____ TRANSFER OF OWNERSHIP: \$10.00

FORMER OWNER _____

HOTEL INFORMATION

Sonoma Horse Park is located 25 miles north of San Francisco in southern Sonoma County and borders Marin County. Hundreds of wineries, luxury hotels and charming bed and breakfast inns, world-renowned restaurants, golf courses and shopping are all a short drive away. Below are our local lodging suggestions.



NOVATO HOTELS

COURTYARD NOVATO

1400 N Hamilton Parkway
Novato, CA 94949
Phone: 415.883.8950
Website: marriott.com/en-us/hotels/sfonv-courtyard-novato-marin-sonoma
Distance to SHP: 9 miles

BEST WESTERN NOVATO OAKS

215 Alameda Del Prado
Novato, CA 94949
Phone: 415.883.4400
Website: novatooaksinn.com
Distance to SHP: 12 miles

INN MARIN

250 Entrada Drive
Novato, CA 94949
Phone: 415.883.5952
Website: innmarin.com
Distance to SHP: 10 miles

PETALUMA HOTELS

COURTYARD PETALUMA

700 Caulfield Lane
Petaluma, CA 94952
Phone: 707.347.5400
Website: marriott.com/en-us/hotels/sfo-cp-courtyard-petaluma-sonoma-county
Distance to SHP: 11 miles

SHERATON PETALUMA

745 Baywood Drive
Petaluma, CA 94952
Phone: 707.283.2888
Website: marriott.com/en-us/hotels/sts-si-sheraton-sonoma-wine-country-petaluma
Distance to SHP: 12 miles

HOTEL PETALUMA

205 Kentucky Street
Petaluma, CA 94952
Phone: 707.559.3393
Website: hotelpetaluma.com
Distance to SHP: 13 miles

LOCAL LUXURY HOTELS

THE LODGE AT SONOMA

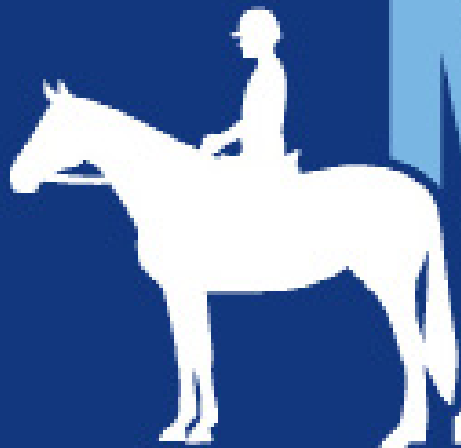
1325 Broadway
Sonoma, CA 95476
Phone: 707.935.6600
Website: marriott.com/en-us/hotels/sfoas-the-lodge-at-sonoma-resort-autograph-collection
Distance to SHP: 16 miles

SONOMA MISSION INN

100 Boyes Blvd
Sonoma, CA 95476
Phone: 707.938.9000
Website: fairmont.com/sonoma
Distance to SHP: 17 miles

CARNEROS RESORT

4048 Sonoma Hwy
Napa, CA 94559
Phone: 866.860.2328
Website: carnerosresort.com
Distance to SHP: 18 miles



MAAPP

MINOR ATHLETE ABUSE PREVENTION

LEARN ABOUT MAAP POLICIES



Safe Sport Training



Local Travel



One-On-One Interactions



Social Media & Electronic Communications



Read about these & more at usef.org/MAAPP

REPORT MAAP POLICY VIOLATIONS



usef.org/safe-sport/reporting

859-225-6915 or Text Anonymously 855-682-8733





RiataDesigns.com

www.riatadesigns.com

Sun Protection Made Beautiful



7600 LAKEVILLE HWY, PETALUMA, CA 94954

sonomahorsepark.com

showgroundslive.com/shp

