



## LA SUMMER CLASSIC

AUGUST 25-28, 2022

USEF "NATIONAL" HUNTERS; LEVEL "2" JUMPER RATED

## LA LABOR DAY CLASSIC

SEPTEMBER 1-SEPTEMBER 4, 2022

USEF "NATIONAL" HUNTERS; LEVEL "2" JUMPER RATED

LOS ANGELES EQUESTRIAN CENTER



[WWW.WESTPALMSEVENTS.COM](http://WWW.WESTPALMSEVENTS.COM)

# New Dynamick® range



Get more  
out of your 2Gs.



**2G<sup>s</sup>**  
*Mademoiselle*

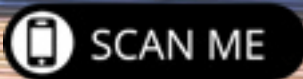
**2G<sup>s</sup>**

**2G<sup>s</sup>**  
**kid**





SCAN HERE TO  
VIEW AMAZING DEALS



GGT ONE Care Slim



ASK ABOUT WATERFREE FOOTING

Contact Cynthia Brewster Keating  
864-804-0011  
[www.ggtfooting.com](http://www.ggtfooting.com)

ARENA CONDITIONERS | ARENA FOOTING | ARENA MATTING SYSTEMS



#### EVENT MANAGER

Adrienne Karazissis

#### SHOW SECRETARY

Caroline Jones

#### TECHNICAL COORDINATOR

John Endicott

#### OFFICE

Julie O'Connor, Kim Hess,  
Nancee Tepley

#### SHOW VETERINARIAN

Dr. David Runk  
(530) 902-0750

#### FARRIER

Perfect Fit Farrier Services  
(805) 358-1700

#### PHOTOGRAPHER

Sara Shier  
sarashierphotography@gmail.com

PO BOX 1092  
CAMARILLO, CA 93011  
PH (818) 987-3336

WWW.WESTPALMSEVENTS.COM

Official Footing Provider  
to all WPPEM Events



# LA SUMMER CLASSIC

AUGUST 25-28, 2022

LOS ANGELES EQUESTRIAN CENTER



#### SHOW APPROVALS

USEF 'National' | PCHA | LAHJA

#### FEATURES

USHJA National Hunter Derby

2'0" & 2'3" Copper Medal Final

3'0" Silver Medal Final - Junior

3'0" Silver Medal Final - Amateur

## SUMMERTIME GRAND PRIX

### LA SUMMER CLASSIC HORSE SHOW OFFICIALS

#### JUDGES

Scott Williamson - Gate Mills, OH  
*Hunters, Equitation*

Haley Schoolfield - Waxahachie, TX  
*Jumpers, Equitation*

Michael Howell - Columbus, OH  
*Jumpers*

Katie Frank - Carlsbad, CA  
*Jumpers*

#### STEWARDS

Jil Edwards

#### COURSE DESIGNER

Marina Azevedo  
Scott Starnes

ENTRIES ARE DUE:  
**AUGUST 8, 2022**



# LA LABOR DAY CLASSIC

SEPTEMBER 1-4, 2022  
LOS ANGELES EQUESTRIAN CENTER



**SHOW APPROVALS**  
USEF 'National' | PCHA | LAHJA

## FEATURES

USHJA National Hunter Derby

2'6" & 2'9" Bronze Medal Final

3'3" Gold Medal Final

## LABOR DAY GRAND PRIX

### LA LABOR DAY CLASSIC HORSE SHOW OFFICIALS

#### JUDGES

Lynn Forgione - Mooresville, NC  
*Hunters, Jumpers, Equitation*

Jenny Fischer - Montgomery, NY  
*Hunters, Jumpers, Equitation*

Michael Howell - Columbus, OH  
*Jumpers*

#### STEWARD

Jil Edwards

#### COURSE DESIGNER

Oscar Soberon  
Lynn Mullins

ENTRIES ARE DUE:  
**AUGUST 8, 2022**

## NOMINATION FEES

**NOMINATION 1** .....\$75  
(Hunters & Equitation)

**NOMINATION 2** .....\$75  
(All Jumper Classes without Prize \$)

**NOMINATION 3** .....\$125  
(All Jumper Classes with Prize \$)

## WARM-UP VOUCHERS

**\$50.00 EACH**

Non-transferable between shows

**Please reference weekly  
schedules as all classes  
below may not be  
offered each week.**



# RATED HUNTERS

Handy Round for Each Division Indicated by “\*”

## GREEN HUNTER 3'6" & 3'9"

USEF & PCHA 'A' Rated

**Division Fee** - \$300

*Individual classes may not be entered*

### Green Hunter 3'6"

**1, 2\*, 3, 4.** \$175 Green Hunter 3'6"

**5.** Green Hunter 3'6" U/S

### Green Hunter 3'9"

**6, 7\*, 8, 9.** \$175 Green Hunter 3'9"

**10.** Green Hunter 3'9" U/S

## GREEN HUNTER 3' & 3'3"

**Division Fee** - \$275

*Individual classes may not be entered*

**38, 39, 40, 41.** \$100 Green Hunter 3'

**42.** Green Hunter 3' U/S

**43, 44, 45, 46.** \$100 Green Hunter 3'3"

**47.** Green Hunter 3'3" U/S

## HIGH PERFORMANCE HUNTER

USEF & PCHA 'A' Rated

**Entry Fee** - \$75 per class

*Fence height: 3'9"*

**23, 24\*, 25, 26.** \$250 High Perf. Hunter

**27.** High Performance Hunter U/S

## CONFORMATION HUNTER

USEF & PCHA 'A' Rated

**Division Fee** - \$300

**Model Entry Fee** - \$30

*Individual classes may not be entered*

**17.** Model

**18, 19\*, 20, 21.** \$175 Conf. Hunter

**22.** Conformation Hunter U/S

## PERFORMANCE HUNTER 3'3"

USEF & PCHA 'A' Rated

**Entry Fee** - \$60 per class

**28, 29\*, 30, 31.** \$100 Perf. Hunter 3'3"

**32.** Performance Hunter 3'3" U/S

## PERFORMANCE HUNTER 3'6"

USEF & PCHA 'A' Rated

**Entry Fee** - \$60 per class

**33, 34\*, 35, 36.** \$125 Perf. Hunter 3'6"

**37.** Performance Hunter 3'6" U/S

## USHJA HUNTERS

USEF & PCHA 'C' Rated

**Entry Fee** - \$60 per class

**113, 114, 115, 116.** USHJA Hunter, Fences 2'

**117.** USHJA Hunter, Fences 2' U/S

**148, 149, 150, 151.** USHJA Hunter, Fences 2'3"

**152.** USHJA Hunter, Fences 2'3" U/S

**108, 109, 110, 111.** USHJA Hunter, Fences 2'6"

**112.** USHJA Hunter, Fences 2'6" U/S

**11, 12, 13, 14.** USHJA Hunter, Fences 2'9"

**15.** USHJA Hunter, Fences 2'9" U/S

**118, 119, 120, 121.** USHJA Hunter, Fences 3'

**122.** USHJA Hunter, Fences 3' U/S

## JUNIOR HUNTER

USEF & PCHA 'A' Rated

**Division Fee** - \$300

*Individual classes may not be entered*

**48, 49\*, 50, 51.** \$125 Small Junior Hunter

**52.** Small Junior Hunter U/S

**53, 54\*, 55, 56.** \$125 Large Junior Hunter

**57.** Large Junior Hunter U/S

## 3'3" JUNIOR HUNTER

USEF & PCHA 'A' Rated

**Division Fee** - \$300

*Individual classes may not be entered*

**153, 154, 155, 156.** \$125 3'3" Small Junior Hunter

**157.** 3'3" Small Junior Hunter U/S

**163, 164, 165, 166.** \$125 3'3" Large Junior Hunter

**167.** 3'3" Large Junior Hunter U/S

## AMATEUR OWNER HUNTER

USEF & PCHA 'A' Rated

**Division Fee** - \$300

*Individual classes may not be entered*

**58, 59\*, 60, 61.** \$125 A/O Hunter 18-35

**62.** A/O Hunter 18-35 U/S

**63, 64\*, 65, 66.** \$125 A/O Hunter 36 & O

**67.** A/O Hunter 36 & over U/S

**68, 69\*, 70, 71.** \$125 3'3" A/O Hunter 18-35

**72.** 3'3" A/O Hunter 18-35 U/S

**182, 183\*, 184, 185.** \$125 3'3" A/O Hunter 36 & O

**186.** 3'3" A/O Hunter 36 & O U/S

## PONY HUNTER

USEF & PCHA 'A' Rated

**Division Fee** - \$285

*Individual classes may not be entered*

**73.** \$100 Small Pony Hunter Conformation

**74\*, 75, 76.** \$100 Small Pony Hunter

**77.** Small Pony Hunter U/S

**78.** \$100 Med Pony Hunter Conformation

**79\*, 80, 81.** \$100 Medium Pony Hunter

**82.** Medium Pony Hunter U/S

**83.** \$100 Lg Pony Hunter Conformation

**84\*, 85, 86.** \$100 Large Pony Hunter

**87.** Large Pony Hunter U/S

## CHILDREN'S PONY HUNTER

**Entry Fee** - \$60 per class

**290, 291, 292.** Children's Pony Hunter

**293.** Children's Pony Hunter U/S

## CHILDREN'S HUNTER

**Entry Fee** - \$60 per class

**88, 89, 90, 91.** Children's Hunter, 13 & U

**92.** Children's Hunter, 13 & under U/S

**93, 94, 95, 96.** Children's Hunter, 14 -17

**97.** Children's Hunter, 14 -17 U/S

## ADULT AMATEUR HUNTER

**Entry Fee** - \$60 per class

**98, 99, 100, 101.** AA Hunter, 18-35

**102.** Adult Amateur Hunter, 18-35 U/S

**103, 104, 105, 106.** AA Hunter, 36 & O

**107.** Adult Amateur Hunter, 36 & O U/S





# Strong ammonia odor in your barn?

## Problem urine spots?

## The solution is here.



**MEGAZORB™ Bedding Pellets** with mega-absorption and odor control are custom made from screened 98% dust free premium pine flakes with zeolite. These premium Mallard Creek equine bedding pellets with zeolite are made with no additives which results in a cleaner, more environmentally friendly bedding for your horse. We control the milling process, pressure and moisture, for a softer, quickly absorbing and virtually dust-free pellet.



**PREMIUM  
BEDDING  
PELLETS**



Made with

# ZEOLITE

**Use as standard pellet bedding or under any shavings**

**Ultra-absorbent**

**Enhanced with Zeolite**

**Controls Harmful Ammonia**

**98% Dust - Free**

**Economical**

**Premium Pine Pellet**

———— **40 lbs. Bag!** ————



# 1-877-SHAVINGS

# USHJA Outreach



## HUNTER

Min. of 2 O/F and 1 U/S and max. of 3 O/F and 1 U/S at one day shows  
Min. of 3 O/F and 1 U/S and max. 4 O/F and 1 U/S at multi-day shows

Hunter Walk Trot Poles  
Hunters 18" or X-rail  
Hunters 2'  
Hunters 2'3"  
Hunters 2'6"  
Hunters 2'9"  
Hunters 3'  
Hunter Derby

## EQUITATION

Min. of 2 O/F and 1 U/S and max. of 3 O/F and 1 U/S at one day shows  
Min. of 3 O/F and 1 U/S and max. of 4 O/F and 1 U/S at multi-day shows

Walk Trot Equitation  
Walk Trot Canter Equitation  
Equitation 18" or X-rail  
Equitation 2'  
Equitation 2'3"  
Equitation 2'6"  
Equitation 2'9"  
Equitation 3'

## JUMPER

Min. of 3 classes and a max. of 3 classes at one day shows  
Min. 3 classes and a max. 5 classes at a multi-day shows

Jumper .60m  
Jumper .65m  
Jumper .70m  
Jumper .75-.80m  
Jumper .85m  
Jumper .90-95m  
Jumper 1.0-1.05m  
Jumper 1.10-1.15m  
Jumper 1.20m

May be offered as Open, Junior, Amateur, Pony or combined/divided at manager discretion.

## NEW Awards & Rewards:

- Point tracking for Horses, Trainers, and Riders
- Outreach High Point Trainer Award for each Zone
- **NEW** Golden Back Stage Pass for highest pointed Gold Certificate Rider in each Zone
- More rewards for certificate earners

## More Flexibility for Managers:

- Three categories - choose the best fit for your competition
- Additional sections - Jumpers now to 1.20m
- Managers may combine, divide or run concurrent sections at their discretion
- Sections may be utilized to best fit competitions - Junior, Amateur, Pony, Open, Schooling
- Flat rate host fee: \$30 per competition regardless of Category



Join the fun at [ushja.org/outreach](https://ushja.org/outreach)!  
Memberships are free!



# OUTREACH CLASSES

The following classes are part of the 2022 USHJA Outreach Program. USEF and USHJA membership is not required to participate in an Outreach Competition or in any Outreach classes. Non-USEF and USHJA members will NOT be charged a Non-Member or Show Pass Fee. Riders and Trainers must be USHJA members at the free Outreach level or higher in order to be eligible for points toward year end awards. Hunter championships will be presented in each hunter section with the top four over fences earning under saddle points. Equitation championships will be presented in each equitation section with points counting equally for all classes. Combined section championships will be presented in each combined section with points counting equally for all classes. Ties broken by the most points over fences; if still tied, then most points in the equitation flat class.

## BEGINNING CHILDREN'S/ADULT HUNTER

No cross entries into classes 3' or higher.

To be shown over a course of fences 2'3"

Entry Fee - \$55 per class

**280, 281, 282, 283.** Beginning Children's/Adult Hunter

**284.** Beginning Ch/Ad Hunter U/S

## 2'6" CHILDREN'S/ADULT HUNTER

No cross entries into classes 3'3" or higher.

To be shown over a course of fences 2'6"

Entry Fee - \$55 per class

**123, 124, 125, 126.** 2'6" Ch/Ad Hunter

**127.** 2'6" Children's/Adult Hunter U/S

## CHILD/ADULT EQUITATION 2'6"

No cross entries into classes 3'3" or higher.

To be shown over a course of fences 2'6"

Equitation to follow the same restrictions as respective hunter divisions.

Entry Fee - \$55 per class

**397, 398.** Child/Adult Eq O/F 2'6"

**399.** Child/Adult Equitation 2'6", flat

## 2'9" CHILDREN'S/ADULT HUNTER

No cross entries into classes 3'6" or higher.

To be shown over a course of fences 2'9"

Entry Fee - \$55 per class

**128, 129, 130, 131.** 2'9" Ch/Ad Hunter

**132.** 2'9" Children's/Adult Hunter U/S

## 2'9" CHILD/ADULT EQUITATION

No cross entries into classes 3'6" or higher.

To be shown over a course of fences 2'9"

Entry Fee - \$55 per class

**385, 386.** 2'9" Child/Adult Equitation

**387.** 2'9" Child/Adult Equitation Flat

## STIRRUP HUNTER DIVISION

Open to riders not competing in classes offering fences 2'9" or higher. **Fences 2'**

Entry Fee - \$55 per class

**Short Stirrup Hunter** Open to riders 11 & U

**133, 134, 135, 136.** Short Stirrup Hunter

**137.** Short Stirrup Hunter U/S

**Long Stirrup Hunter** Open to riders 12 -17

**138, 139, 140, 141.** Long Stirrup Hunter

**142.** Long Stirrup Hunter U/S

**Rusty Stirrup Hunter** Open to riders 18 & O

**143, 144, 145, 146.** Rusty Stirrup Hunter

**147.** Rusty Stirrup Hunter U/S

## STIRRUP EQUITATION

Open to riders not competing in classes offering fences 2'9" or higher. **Fences 2'**

Short, Long and Rusty Stirrup Equitation to follow same restrictions as respective hunter divisions.

Entry Fee - \$55 per class

**388, 389.** Short Stirrup Eq O/F

**390.** Short Stirrup Eq, Flat

**391, 392.** Long Stirrup Eq O/F

**393.** Long Stirrup Eq, Flat

**394, 395.** Rusty Stirrup Eq O/F

**396.** Rusty Stirrup Eq, Flat

## WALK TROT/CROSS RAILS

Riders may not cross enter into the stirrup sections if they compete in Walk Trot or CrossRail classes.

Exception is Stirrup U/S

Entry Fee: \$50 per class

**179, 180.** Walk Equitation

**170, 171, 172.** Walk Trot Equitation

**187, 188, 189.** Walk Trot Pleasure

**174, 175.** Trot a Pole Equitation

**176.** Trot a Pole Eq Flat

Riders will be given a short track to maneuver at the walk/trot including things such as halting next to a bush or guiding their horse through two rails.

**191, 192, 193.** CrossRail Hunter

**194.** CrossRail Hunter U/S

**195, 196, 197.** CrossRail Equitation

**198.** Cross Rail Eq Flat

**413.** Leadline

Riders may not show in any other class at the show

# MEDAL CLASSES

ENTRY FEE: \$55 PER CLASS

## 343. CPHA HORSEMANSHIP MEDAL

Fence Height 2'6"

## 324. PCHA JR./AM HORSEMANSHIP

Fence Height 2'9"

## 322. LAHJA COPPER MEDAL

Fence Height 2'0"/2'3"

## 323. LAHJA BRONZE MEDAL

Fence Height 2'6"/2'9"

# OUTREACH CLASSES

The following classes are part of the 2022 USHJA Outreach Program. USEF and USHJA membership is not required to participate in an Outreach Competition or in any Outreach classes. Non-USEF and USHJA members will NOT be charged a Non-Member or Show Pass Fee. Riders and Trainers must be USHJA members at the free Outreach level or higher in order to be eligible for points toward year end awards. Hunter championships will be presented in each hunter section with the top four over fences earning under saddle points. Equitation championships will be presented in each equitation section with points counting equally for all classes. Combined section championships will be presented in each combined section with points counting equally for all classes. Ties broken by the most points over fences; if still tied, then most points in the equitation flat class.

## JUMPERS

ENTRY FEE: \$60 PER CLASS

.65m	267, 276, 277.	.80m Children's/Adult Amateur Jumper	223, 224, 225.
		Riders may not cross enter into any class with fences 3'6" or higher.	
.65m Jr/Am	268, 269, 278.		
.70m	263, 264, 265, 266.	.90m Child/Adult Amateur Jumper	227, 228, 229.
		Riders may not cross enter into any class with fences 3'6" or higher.	
.80m	200, 201, 202, 211.		
.90m	203, 204, 205, 206.		

### 416. \$250 PLAID HORSE CAROUSEL HUNTER DERBY-CHILD/ADULT OUTREACH

Entry Fee: \$75

To be eligible, horses must have competed in at least two classes over fences in any 2'6" or 2'9" sections at the same show. Riders may not have shown over 3'0" or in the USHJA National Hunter Derby at the same show. Riders may show multiple horses in this class. Open to junior and amateur riders only. Horse and rider combinations to jump a Classic round consisting of 5-6 fences. Directly after the completion of the Classic round, horses will pick up their pace and pass through a set of markers to begin the Handy portion of the class. The Handy round will consist of 4-5 fences, where pace, brilliance, and a shorter track are to be rewarded. Option fences may be used in either round, at the course designer's discretion. This class will be judged by one judge giving one score. Formal attire is requested, but not required. Prize money is divided as follows: 30%, 22%, 15%, 10%, 7%, 6%, 5%, 5%.

### 401. \$250 LOCAL HUNTER DERBY- 2' OUTREACH

Entry Fee: \$75

To be eligible, horses must have competed in at least two classes over fences in any of the Outreach sections at the same show. Riders may not have shown over 2'9" or in the USHJA National Hunter Derby at the same show. Riders may show multiple horses in this class. Open to junior and amateur riders only. Horse and rider combinations to jump a Classic round consisting of 5-6 fences. Directly after the completion of the Classic round, horses will pick up their pace and pass through a set of markers to begin the Handy portion of the class. The Handy round will consist of 4-5 fences, where pace, brilliance, and a shorter track are to be rewarded. Option fences may be used in either round, at the course designer's discretion. Two scores will be given by the judging panel, with one score for the Classic round, and one score for the Handy round. The scores will be added together to determine the total score and placement. In the case of a tie, the Handy score will be designated as the tie breaker. Formal attire is requested, but not required. Prize money is divided as follows: 30%, 22%, 15%, 10%, 7%, 6%, 5%, 5%.

# MEDAL & EQUITATION CLASSES

ENTRY FEE: \$60 PER CLASS. Medal Class specifications will be available in the Horse Show Office

<b>326. ASCPA MACLAY</b> Fence Height 3'6"	<b>336. PCHA HORSEMANSHIP CLASS 14 &amp; UNDER</b> Fence Height 3'3"	<b>315. LAHJA SILVER JUNIOR MEDAL</b> Fence Height 3'
<b>327. CPHA JUNIOR MEDAL</b> Fence Height 3'6"	<b>337. PCHA ADULT MEDAL CLASS</b> Fence Height 3'3"	<b>316. LAHJA SILVER SENIOR MEDAL</b> Fence Height 3'
<b>328. CPHA SENIOR MEDAL</b> Fence Height 3'6"	<b>329. PCHA ADULT MEDAL CLASS 18-34</b> Fence Height 3'3"	<b>317. LAHJA GOLD MEDAL</b> Fence Height 3'3"
<b>330. WCE</b> Fence Height 1.10m	<b>338. THIS NATIONAL CHILD MEDAL</b> Fence Height 3'	<b>349. USEF PONY MEDAL</b> Fence Height 2'3", 2'6", 2'9"
<b>331. CPHA FOUNDATION</b> Fence Height 3'3"	<b>339. ARIAT NATIONAL ADULT MEDAL</b> Fence Height 3'	<b>EQUITATION 14 &amp; UNDER</b> <b>360.</b> Equitation, Flat <b>361, 362.</b> Equitation, Fences, 3'
<b>332. DOVER SADDLERY USEF HUNTER SEAT MEDAL</b> Fence Height 3'6"	<b>340. CPHA CHILD/ADULT MEDAL</b> Fence Height 3'	<b>EQUITATION 15 - 17</b> <b>363.</b> Equitation, Flat <b>364, 365.</b> Equitation, Fences, 3'
<b>333. FOXFIELD MEDAL - 18 &amp; OVER</b> Fence Height 3'3"	<b>354. CPHA STYLE OF RIDING MEDAL</b> Fence Height 1.0m	<b>EQUITATION 18 &amp; OVER</b> <b>366.</b> Equitation, Flat <b>367, 368.</b> Equitation, Fences, 3'
<b>334. USEF ADULT MEDAL</b> Fence Height 3'3"	<b>356. EMO/USHJA JUMPING SEAT MEDAL</b> Fence Height 3'3"	
<b>335. ONONDARKA MEDAL</b> Fence Height 3'		

## JUMPER SECTIONS

PLEASE REFERENCE WEEKLY SCHEDULES AS ALL CLASSES BELOW MAY NOT BE OFFERED EACH WEEK.

### JUMPER METER TABLE

<b>0.80 m</b>	Fences 2'9" in height
<b>0.85 m</b>	Fences 2'10" in height
<b>0.90 m</b>	Fences 2'11" in height
<b>0.95 m</b>	Fences 3'1" in height
<b>1.00 m</b>	Fences 3'3" in height
<b>1.05 m</b>	Fences 3'5" in height
<b>1.10 m</b>	Fences 3'7" in height
<b>1.15 m</b>	Fences 3'9" in height
<b>1.20 m</b>	Fences 3'11" in height
<b>1.25 m</b>	Fences 4'1" in height
<b>1.30 m</b>	Fences 4'3" in height
<b>1.35 m</b>	Fences 4'5" in height
<b>1.40 m</b>	Fences 4'7" in height

### Entry Fee: \$60 per class

1.00m	207, 208, 209, 210.
1.10m	212, 213, 214, 215.
1.20m	218, 219.
1.05m Pony Jumper	230, 231, 232.
1.0m Low Children's/Adult Amateur Jumper	236, 237, 238.
1.10m Children's Jumper	240, 241, 242.
1.10m Adult Amateur Jumper	244, 245, 246.

### Entry Fee: \$65 per class

\$250 1.20m Low Junior/Amateur Jumper	248, 249, 250.
\$250 1.30m Medium Junior/Amateur Jumper	270, 271.
\$250 1.30m Jumper	251, 252, 253.
\$250 1.35m Jumper	254, 255.
\$250 1.40m Jumper	256, 258.
\$250 1.40m High Junior/Amateur	273, 274.



# THIS *is* *Horsetrader country.*

*California Horsetrader and horsetrader.com,*  
proud sponsors of West Palms Events since 2008

Official West Palms photo by Amy McCool  
[www.mccoolphotos.com](http://www.mccoolphotos.com)

West Palms trainers, exhibitors  
and owners have special online and  
print promotion privileges!

**Enjoy yours today:** <http://bit.ly/19westpalms>

California  
**Horsetrader**  
[horsetrader.com](http://horsetrader.com)

**760/546-1184**



# SPECIAL CLASSES

## CLASSICS

Declaration of all special classes must be made in the Horse show office by 4:00 p.m. the day before the class takes place. Riders are required to wear formal attire in all special classes. Riders must ride for awards. A suitable horse should be available. Failure to show up for the awards presentation in these classes will result in the forfeiture of prize money. Trophy to first, ribbons through 8, and prize money divided as follows unless otherwise stated: 30%, 22%, 15%, 10%, 7%, 6%, 5%, 5%.

The final round of each division will be the first round of the classic. Exhibitors must enter the classic prior to the start of the first round class. Scratches are not permitted after the first round class has begun. See the time Schedule for the designated first round class. Horses must have entered, shown, and completed the course in at least two of the respective hunter division classes over fences at this show. To be judged on performance and soundness, suitability and manners to count. To be scored under the open numerical judging system. To be shown over a course of approximately 10 jumps of height designated by the qualifying division. The twelve horses with the highest scores from the first round will return to jump a second round over a different course. In the event of equality in the first round, all equal scores will return for the second round. Scores will be combined from the first round with the second round to determine overall winners.

---

<b>402. \$500 CHILDREN'S/ADULT HUNTER CLASSIC</b>	<b>Entry Fee: \$50</b>
---	------------------------

---

---

<b>404. \$500 PONY HUNTER CLASSIC</b>	<b>Entry Fee: \$50</b>
---------------------------------------	------------------------

---

---

<b>405. \$1,000 3'3" &amp; 3'6" JUNIOR/AO HUNTER CLASSIC</b>	<b>Entry Fee: \$100</b>
--	-------------------------

---

---

<b>407. \$250 LOW CHILD/ADULT JUMPER CLASSIC - 1.0M</b>	<b>Entry Fee: \$65</b>
---	------------------------

---

---

<b>408. \$500 CHILDREN'S/ADULT JUMPER CLASSIC - 1.10M</b>	<b>Entry Fee: \$75</b>
---	------------------------

---

---

<b>411. \$1,000 LOW JUNIOR/AMATEUR JUMPER CLASSIC - 1.20M</b>	<b>Entry Fee: \$125</b>
---	-------------------------

---

---

<b>421. \$3,500 GGT FOOTING 1.30M</b>	 <b>Entry Fee: \$275</b>
---------------------------------------	---

---

---

<b>414. \$2,500 USHJA NATIONAL HUNTER DERBY</b>	<b>Entry Fee: \$225</b>
---	-------------------------

Please refer to [www.ushja.org](http://www.ushja.org) for current specifications.

---

---

<b>420. \$9,999 SUMMERTIME GRAND PRIX</b>	<b>AUGUST 27</b>
---	------------------

---

---

<b>420. \$9,999 LABOR DAY GRAND PRIX</b>	<b>SEPTEMBER 3</b>
--	--------------------

**Entry Fee: \$400**

1.30m. Ribbons to twelfth. Prize money is divided as follows: 30%, 22%, 13%, 8%, 6%, 5%, 4%, 3%, 3%, 2%, 2%, 2%.



# SPECIAL CLASSES



## 2022 LAHJA MEDAL FINALS

### SCHOOLING

1. Schooling will be allowed only in the designated schooling area.
2. For safety reasons schooling jumps may be restricted; these restrictions will be posted at the entrance to the schooling area.
3. The LAHJA may designate a schooling supervisor who will have authority in the schooling area during the finals.

### WARM-UP CLASS

1. A warm-up class must be offered for each final and held in the same arena and under the same conditions as the scheduled final.
2. It is recommended that the warm-up class immediately precede the first round of the Medal Final.
3. The warm-up class is open only to those riders qualified for and entered in the final that the warm-up class corresponds to. A guest rider is not eligible for the warm-up class.
4. Riders may ride any horse of their choosing, but in no case may a rider participate on more than one horse.
5. The warm-up class will not be judged, but a posted order will be adhered to.
6. The warm-up class will be presided over by a USEF judge and riders must follow the posted course. Although the class is not judged, riders will be eliminated for the same things that constitute elimination in an equitation class.
7. The course will be set according to the same specifications as the first round of the corresponding medal final.

### TECHNICAL DELEGATE

There must be a Technical Delegate (TD). The TD will be recommended by the Hunter/Jumper/Equitation Committee and approved by the Board of Directors. The TD will be responsible for interfacing with the Horse Show Management, officials, and exhibitors. The Association will be responsible for lodging (if needed) and a fee of \$275 per day.

1. The TD will meet with the Executive Administrator and management in a timely fashion before the event to go over the class schedule and class specifications, and to make sure the judges are given copies of the class format prior to the competition. The TD should go over lighting and time schedule to ensure that as many problems as possible are foreseen and avoided. The TD should also plan to be present at the presentation of awards.
2. The TD should be present at the drawing for the order of go. At this time he should be available to answer any questions posed by exhibitors. The TD should also be present and available to exhibitors at any social functions.
3. The TD should set up daily meetings, if necessary, with the Executive Administrator and officials to go over details such as:
  - a. The course plan (making sure each judge has a copy, and that one copy is posted in a timely manner)
  - b. Scoring
  - c. Score keeping and announcing
  - d. Preceding the work-off the TD will meet with the judges and have work-off courses pre-planned, should they be necessary.
5. The TD will collect copies of judge's cards, course plans, score sheets, and official printed results from each round and send them to the association.
6. The TD will ensure that each judge has the opportunity to walk the course prior to the beginning of the competition.

### STEWARDS and APPEALS COMMITTEE

A USEF Steward must be present. The Appeals Committee will consist of the LAHJA appointed Technical Delegate, one USEF Steward, the LAHJA Executive Administrator and the horse show manager. Any protest must be filed within one hour of the conclusion of the class. No money need be given with the protest, but it must be written, signed and handed to a member of the Appeals Committee. Except for what is specified above, USEF rules regarding equitation classes will be followed. Additional specifications and/or clarification may be sent out by the LAHJA prior to the Finals and will take precedence over the listed specifications. In cases of inclement weather or other unforeseen circumstances the format for the medal finals may be modified. The Appeals Committee must approve the method of modification.

### HORSE

The same horse or pony must be ridden through all phases of competition. However, due to illness or injury of the horse, a rider may petition the Appeals Committee to ride a substitute horse.

### COURSE DESIGNER

The course designer designated by the horse show management hosting the medal finals will design the medal finals courses. The same course designer will be used throughout the finals.

### AWARDS:

LAHJA to provide all awards. Winners of each round will receive a trophy and ribbons through 10th. At the completion of the final, championship awards will be presented to the Overall top ten riders. Riders must complete all rounds (work-off not included) to be eligible for an Overall award.





# SPECIAL CLASSES



## LAHJA MEDAL FINALS WARM UP ROUNDS

Entry Fee: \$50

500. COPPER MEDAL FINAL WARM UP

502. SILVER MEDAL FINAL WARM UP

501. BRONZE MEDAL FINAL WARM UP

503. GOLD MEDAL FINAL WARM UP

## LAHJA GOLD MEDAL FINAL: JUNIOR & AMATEUR

Entry Fee: \$125

**FORMAT** The finals will be held over two days.

- Day one – **503.** Warm-up                      **608.** LAHJA Gold Medal Final Round 1
- Day two – **609.** LAHJA Gold Medal Final Round 2 and Work Off

**JUDGING PROCEDURES** The Medal Finals will consist of two over fences rounds and a flat phase. All riders will return for the second round. The top ten riders plus any rider with total score of 160 or above from rounds 1 and 2 will return for the flat phase. Scores will be announced in the first three rounds; work-off scores (if any) will not be announced. The first two rounds will be judged by two judges sitting apart. Each judge will provide one score per rider. The judges will sit together for round three (the flat phase). Following round 3 (the flat phase), any riders with a three round score of 240 or better will be required to work off. The score from the work-off will be added to the three round total to determine the winner. The judges will sit together for the work-off. The same judges must be used for all rounds.

**SCORING** Scores from round 1 will be averaged, scores from round 2 will be averaged and added to the scores from round 1 to determine the top ten that will return for the flat phase. To obtain a final score after the flat phase the scores from rounds 1, 2 and 3 will be added. The score for the work-off (if any) will be added to the three round total to determine the winner. Ties in rounds 1 and 2 will be broken by the call judge who will be determined and announced prior to the start of the class. In the event of a tie following round 3 for the overall placing the rider with the highest score in round 3 2 will receive the higher placing.

**ORDER OF GO** Round 1 will be drawn. Round 2 will be the reverse order of Round 1. If a work-off is necessary, riders will work in reverse order of the three round total score (low score working first).

**COURSES** The courses for the two qualifying rounds will consist of one straight-forward hunter/equitation-type round (Round 1) held in the main hunter ring and one jumper/equitation-type course (Round 2) held in the main jumper ring. Water and liver pools are not allowed. Fences not to exceed 3'3".

## DIRECTIONS TO LOS ANGELES EQUESTRIAN CENTER

**480 West Riverside Drive  
Burbank, CA 91506  
Tel: (818) 840-9063**

### DIRECTIONS

Take I-5 to W Alameda Avenue, Exit 145B.  
Follow W Alameda Avenue for a half mile.  
Turn left onto S Main Street and follow into  
the LA Equestrian Center.





# SPECIAL CLASSES



## LAHJA SILVER MEDAL FINAL: JUNIOR & AMATEUR

Entry Fee: \$125

**FORMAT** The finals will be held over two days.

- Day one – **502.** Warm-up    **600.** LAHJA Silver Medal Final Junior Round 1    **603.** LAHJA Silver Medal Final Senior Round 1
- Day two – **601.** LAHJA Silver Medal Final Junior Round 2 & Work Off  
                  **604.** LAHJA Silver Medal Final Senior Round 2 & Work Off

**JUDGING PROCEDURES** The Medal Finals will consist of two over fences rounds. All riders will return for the second round. The top ten riders plus any rider with total score of 160 or above from rounds 1 and 2 will return for round three. Scores will be announced in the first three rounds; work-off scores (if any) will not be announced. The first two rounds will be judged by two judges sitting apart. Each judge will provide one score per rider. The judges will sit together for the third round and work-off (if any). Following round 3, any riders with a three round score of 240 or better will be required to work off. The score from the work-off will be added to the three round total to determine the winner. The judges will sit together for the work-off. The same judges must be used for all rounds.

**SCORING** Scores from round 1 will be averaged, scores from round 2 will be averaged and added to the scores from round 1 to determine the top ten that will return for round three. To obtain a final score after round 3 the scores from rounds 1, 2 and 3 will be added. The score for the work-off (if any) will be added to the three round total to determine the winner. Ties in rounds 1 and 2 will be broken by the call judge who will be determined and announced prior to the start of the class. In the event of a tie following round 3 for the overall placing the rider with the highest score in round 3 will receive the higher placing.

**ORDER OF GO** Round 1 will be drawn. Round 2 will be the reverse order of Round 1. Round 3 will ride low score to high score from the total score of the first two rounds. The top ten scores and any ties for 10th place will return for Round 3. If a work-off is necessary, riders will work in reverse order of the three round total score (low score working first).

**COURSES** All three rounds will be hunter seat equitation courses. The first round will be a straight forward hunter seat equitation course. The second and third rounds will be of increasing difficulty for intermediate level riders. Fences not to exceed 3'.

---

## LAHJA BRONZE MEDAL FINAL: JUNIOR & AMATEUR

Entry Fee: \$125

**ELIGIBILITY** Open to junior and amateur riders who have not shown above 3' in the current qualifying season.

**FORMAT** The final will be held over two days.

- Day one – **501.** Warm-up    **611.** LAHJA Bronze Medal Final Round 1
- Day two – **612.** LAHJA Bronze Medal Final Round 2 & Work Off

The final will be held at two heights (2'6" and 2'9"). Qualified riders may compete at the height of their choice but may only compete at one height for all rounds of the final. In all rounds, including the work-off, the riders competing at 2'9" will compete first followed by the riders competing at 2'6". Riders in both height sections will be judged together.

**JUDGING PROCEDURES** The Medal Finals will consist of two over fences rounds and a work-off. All riders will return for the second round. Following the second round, the top four plus any rider within three points of the leader will return for the work-off. Scores will be announced in the first two rounds; work-off scores will not be announced. The first two rounds will be judged by two judges sitting apart. Each judge will provide one score per rider. The judges will sit together for the work-off. The same judges must be used for all rounds.

**SCORING** Scores from round 1 will be averaged, scores from round 2 will be averaged and added to the score from round 1 to determine the riders that will return for the work-off. The score for the work-off will be added to the two round total to determine the winner. Ties in rounds 1 and 2 will be broken by the call judge who will be determined and announced prior to the start of the class.

**ORDER OF GO** Round 1 will be drawn. Round 2 will be the reverse order of Round 1. In the work-off riders will work in reverse order of the two round total score (low score working first). In all rounds, including the work-off, all riders competing at 2'9" will compete first followed by the riders competing at 2'6".

**COURSES** Both rounds will be hunter seat equitation courses for the novice rider. Fences not to exceed 2'9". Each round will be set at two heights, the 2'9" height will be first followed by 2'6".



# SPECIAL CLASSES



## LAHJA COPPER MEDAL FINAL: JUNIOR & AMATEUR

Entry Fee: \$125

**ELIGIBILITY** Open to junior and amateur riders who have not shown above 2'6" in the current qualifying season.

**FORMAT** The final will be held over one day.

- Day one – **500.** Warm-up     **606.** LAHJA Copper Medal Final Round 1  
   **607.** LAHJA Copper Medal Final Round 2 & Work Off

The final will be held at two heights (2' and 2'3"). Qualified riders may compete at the height of their choice. The riders competing at 2'3" will compete first followed by the riders competing at 2'. Riders in both height sections will be judged together.

**JUDGING PROCEDURES** The Medal Final will consist of one over fences rounds and a flat phase. All riders will return for the flat phase. Scores will be announced in the first round; flat phase scores will not be announced. The final will be judged by two judges sitting together. The same judges must be used for both the over fences and the flat phase.

**SCORING** Scores from round 1 and the flat phase will be added together to determine the winner

**ORDER OF GO** Round 1 will be drawn. all riders competing at 2'3" will compete first followed by the riders competing at 2'.

**COURSES** The course will include one test (USEF 1-8). Fences not to exceed 2'3". The course will be set at two heights, the 2'3" height will be first followed by 2'.





PHOTO © ANDREW RYBACK PHOTOGRAPHY



# The Plaid Horse

North America's Horse Show Magazine

Celebrating our 16th year  
covering the hunter/jumper world.  
[theplaidhorse.com](http://theplaidhorse.com)





*RiataDesigns.com*

[www.riatadesigns.com](http://www.riatadesigns.com)

Sun Protection Made Beautiful



WEST PALMS  
EVENT MANAGEMENT

## LA Summer Classic

August 25-28, 2022

Entries submitted online. For details visit: [www.westpalmsevents.com](http://www.westpalmsevents.com)

Entries are due by August 8, 2022

OWNER										RIDER ONE										RIDER TWO										TRAINER									
Owner Name										Rider Name										Trainer Name																			
Address										Address										Address																			
City/State/Zip										City/State/Zip										City/State/Zip																			
Telephone										Telephone										Telephone																			
Social Security # (if corporation see below)										E-Mail										E-Mail																			
PCHA										USEF/USHJA										USEF/USHJA																			
E-Mail										ASPCA										ASPCA																			
PRIZE MONEY PAID TO										PCHA										PCHA																			
Individual Name (one name only) or Corporation Name										Rider Name										Credit Card #																			
Social Security #										Address										Cardholder Name																			
Fed #										City/State/Zip										Signature																			
Address										USEF/USHJA										Deposit Received \$																			
City/State/Zip										PCHA										Closeout \$																			
NAME OF HORSE										RIDER ONE										CLASSES																			
COLOR										SEX										HEIGHT																			
AGE										BIRTHDAY										RIDER 1																			
Please circle below if applicable										1st Yr										2nd Yr																			
Sm										Med										Lg																			
USHJA#										BIRTHDAY										RIDER 2																			
FEDERATION ENTRY AGREEMENT By entering a Federation-licensed Competition and signing this entry blank as the Owner, Lessee, Trainer, Manager, Agent, Coach, Driver, Rider, Handler, Vaulter or Longeur and on behalf of myself and my principals, representatives, employees and agents, I agree that I am subject to the Bylaws and Rules of The United States Equestrian Federation, Inc. (the "Federation") and the local rules of LA Summer Classic. I agree to be bound by the Bylaws and Rules of the Federation and of the competition. I will accept as final the decision of the Hearing Committee on any question arising under the Rules, and agree to release and hold harmless the competition, the Federation, their officials, directors and employees for any action taken under the Rules. I represent that I am eligible to enter and/or participate under the Rules, and agree to release and enter is eligible as entered. I also agree that as a condition of and in consideration of acceptance of entry, the Federation and/or the Competition may use or assign photographs, videos, audios, cable - casts, broadcasts, internet, film, new media or other likenesses of me and my horse taken during the course of the competition for the promotion, coverage or benefit of the Federation. Those likenesses shall not be used to advertise a product and they may not be used in such a way as to jeopardize amateur status. I hereby expressly and irrevocably waive and release any rights in connection with such use, including any claim to compensation, invasion of privacy, right of publicity, or to misappropriation. The construction and application of Federation rules are governed by the laws of the State of New York, and any action instituted against the Federation must be filed in New York State. See GR908.4.										ASSOCIATION										ASSOCIATION																			
USEF FEDERATION DRUG										\$23.00										USEF FEDERATION DRUG																			
CDFA DRUG										\$8.00										CDFA DRUG																			
USHJA										\$7.00										USHJA																			
USEF SHOW PASS										\$45.00										USEF SHOW PASS																			
USHJA SHOW PASS										\$30.00										USHJA SHOW PASS																			
HORSE SHOW										HORSE SHOW										HORSE SHOW																			
STALL										\$400.00										STALL																			
LATE										\$75.00										LATE																			
OFFICE/GROUNDS										\$85.00										OFFICE/GROUNDS																			
NOMINATION LEVEL 1										\$75.00										NOMINATION LEVEL 1																			
NOMINATION LEVEL 2										\$125.00										NOMINATION LEVEL 2																			
FACILITY										\$85.00										FACILITY																			
RV										\$495.00										RV																			
4% CREDIT CARD																				4% CREDIT CARD																			
Please refer to the rules and regulations for complete details.																				Please refer to the rules and regulations for complete details.																			
SEND ONLY NOMINATION AND STALL/TACK FEES WITH ENTRY TOTAL AMOUNT DUE.																				SEND ONLY NOMINATION AND STALL/TACK FEES WITH ENTRY TOTAL AMOUNT DUE.																			
STABLE WITH:																				STABLE WITH:																			

OWNER/MANAGER (Mandatory)										TRAINER (Mandatory)									
Signature: _____										Signature: _____									
Print Name: _____										Print Name: _____									
PARENT/GUARDIAN (Mandatory if rider/handler is a minor)										COACH (if applicable)									
Signature: _____										Signature: _____									
Print Name: _____										Print Name: _____									

RIDER/HANDLER (Mandatory)										RIDER/HANDLER (Mandatory)									
Is Rider/Driver/Handler a U.S. citizen? (please circle)										Is Rider/Driver/Handler a U.S. citizen? (please circle)									
Signature: _____										Signature: _____									
Print Name: _____										Print Name: _____									

EMERGENCY CONTACT										ENTER ONLINE AT: <a href="http://www.westpalmsevents.com">www.westpalmsevents.com</a>									
Name: _____										Name: _____									
PHONE: _____										PHONE: _____									



OWNER										RIDER ONE										RIDER TWO										TRAINER									
Owner Name										Rider Name										Trainer Name																			
Address										Address										Address																			
City/State/Zip										City/State/Zip										City/State/Zip																			
Telephone										Telephone										Telephone																			
Social Security # (if corporation see below)										E-Mail										E-Mail																			
PCHA										USEF/USHJA										USEF/USHJA																			
E-Mail										ASPCA										ASPCA																			
USEF/USHJA										PCHA										PCHA																			
PRIZE MONEY PAID TO										RIDER TWO										PAYMENT INFO																			
Individual Name (one name only) or Corporation Name										Rider Name										Credit Card #																			
Social Security #										Address										Cardholder Name																			
Fed #										City/State/Zip										Signature																			
Address										USEF/USHJA										Deposit Received \$																			
City/State/Zip										PCHA										Closeout \$																			
NAME OF HORSE										RIDER ONE										CLASSES																			
COLOR										SEX										HEIGHT																			
AGE										BIRTHDAY										ASSOCIATION																			
USHJA#										RIDER TWO										USHJA																			
Please circle below if applicable										RIDER TWO										CDFA DRUG																			
1st Yr										2nd Yr										3rd Yr																			
Sm										Med										Lg																			
By signing below as owner, agent, rider, handler, lessee, trainer, coach or as parent or adult guardian of a minor, I am fully aware and acknowledge that horse sports and competitions involve inherent dangerous risks of accident, loss, and serious bodily injury including broken bones, head injuries, trauma, pain, suffering and/or death ("Harm"). By signing below, I agree to release the competition from all claims for money damages or otherwise for any Harm to me or my horse and for any Harm caused by me or my horse to others, even if the Harm resulted directly or indirectly from the negligence of the competition. If I am signing as a parent or guardian of a junior exhibitor, I consent to the child's participation and agree to all of the above provisions and agree to assume all of the obligations of this release on the child's behalf. I agree that the term "competition" as used above includes, but is not limited to, the horse show, West Palms Event Management and LEG Shows & Events, its officials, officers, directors, employees, contractors, agents, personnel, volunteers and affiliated organizations, as well as the facility (Hansen Dam Horse Park or LA Equestrian Center).										RIDER TWO										ASSOCIATION																			
RIDER/HANDLER (Mandatory)										OWNER/MANAGER (Mandatory)										HORSE SHOW																			
Is Rider/Driver/Handler a U.S. citizen? (please circle)										Signature: _____										STALL																			
Yes No										Print Name: _____										LATE																			
OFFICE/GROUNDS FEE										Signature: _____										\$2.00																			
NOMINATION LEVEL 1										Print Name: _____										\$7.50																			
NOMINATION LEVEL 2										Signature: _____										\$8.00																			
NOMINATION LEVEL 3										Print Name: _____										\$75.00																			
FACILITY										Signature: _____										\$125.00																			
RV										Print Name: _____										\$85.00																			
4% CREDIT CARD PROCESSING										Signature: _____										\$495.00																			
Please refer to the rules and regulations for complete details.										Print Name: _____																													
SEND ONLY NOMINATION AND STALL/TACK FEES WITH ENTRY										Signature: _____																													
TOTAL AMOUNT DUE										Print Name: _____																													
STABLE WITH:										Signature: _____																													
EMERGENCY CONTACT										Signature: _____																													
Name: _____										Print Name: _____																													
PHONE: _____										Signature: _____																													
ENTER ONLINE AT: <a href="http://www.westpalmssevents.com">www.westpalmssevents.com</a>										Print Name: _____																													

OWNER										RIDER ONE										RIDER TWO										TRAINER									
Owner Name					Rider Name					Trainer Name																													
Address					Address					Address																													
City/State/Zip					City/State/Zip					City/State/Zip																													
Social Security # (if corporation see below)					Telephone					E-Mail					Telephone					E-Mail																			
E-Mail					PCHA					USEF/USHJA					USEF/USHJA					USEF/USHJA					PCHA														
USEF/USHJA					PCHA					PCHA					PCHA					PCHA					PCHA														
PRIZE MONEY PAID TO																																							
Individual Name (one name only) or Corporation Name																																							
Social Security #					Address					Telephone					Cardholder Name					Exp.					CV#														
Fed #					City/State/Zip					E-Mail					Signature					Billing Zip																			
Address					USEF/USHJA					Ct#					Deposit Received \$					Ct#					Date														
City/State/Zip					PCHA					ASPCA					Closeout \$					Ct#					Date														
NAME OF HORSE																																							
RIDER ONE										RIDER TWO										CLASSES																			
USHA#										USHA#										ASSOCIATION																			
FEDERATION ENTRY AGREEMENT By entering a Federation-licensed Competition and signing this entry blank as the Owner, Lessee, Trainer, Manager, Agent, Coach, Driver, Rider, Handler, Valet or Longeur and on behalf of myself and my principals, representatives, employees and agents, I agree that I am subject to the Bylaws and Rules of The United States Equestrian Federation, Inc. (the "Federation") and the local rules of LA Labor Day Classic. I agree to be bound by the Bylaws and Rules of the Federation and of the competition. I will accept as final the decision of the Hearing Committee on any question arising under the Rules, and agree to release and hold harmless the competition, the Federation, their officials, directors and employees for any action taken under the Rules. I represent that I am eligible to enter and/or participate under the Rules, and agree to release and enter is eligible as entered. I also agree that as a condition of and in consideration of acceptance of entry, the Federation and/or the Competition may use or assign photographs, videos, audios, cable - casts, broadcasts, internet, film, new media or other likenesses of me and my horse taken during the course of the competition for the promotion, coverage or benefit of the competition, sport, or the Federation. Those likenesses shall not be used to advertise a product and they may not be used in such a way as to jeopardize amateur status. I hereby expressly and irrevocably waive and release any rights in connection with such use, including any claim to compensation, invasion of privacy, right of publicity, or to misappropriation. The construction and application of Federation rules are governed by the laws of the State of New York, and any action instituted against the Federation must be filed in New York State. See GR908.4.										FEDERATION RELEASE, ASSUMPTION OF RISK, WAIVER, AND INDEMNIFICATION I HAVE CAREFULLY READ THIS DOCUMENT IN ITS ENTIRETY, UNDERSTAND ALL OF ITS TERMS AND CONDITIONS, AND KNOW IT CONTAINS AN ASSUMPTION OF RISK, RELEASE AND WAIVER FROM LIABILITY, AS WELL AS A HOLD HARMLESS AND INDEMNIFICATION OBLIGATIONS. By signing below, I (as the participant or as the Parent/Legal Guardian of the minor identified below) hereby accept and agree to the terms and conditions of this Agreement in connection with my (or the minor's) participation in any USEF Event, if, despite this Agreement, I, or anyone on my behalf or the minor's behalf, makes a claim for liability against any of the Released Parties, I will indemnify, defend and hold harmless each of the Released Parties from any such liabilities as the result of such claim. BY SIGNING BELOW, I AGREE to be bound by all applicable Federation Rules and all terms and provisions of this Prize List. If I am signing and submitting this Agreement electronically, I acknowledge that my electronic signature shall have the same validity, force and effect as if I affixed my signature by my own hand.										USEF FEDERATION DRUG \$23.00										USEF FEDERATION DRUG \$23.00									
																				CDFA DRUG \$8.00										CDFA DRUG \$8.00									
																				USHJA \$7.00										USHJA \$7.00									
																				USEF SHOW PASS \$45.00										USEF SHOW PASS \$45.00									
																				USHJA SHOW PASS \$30.00										USHJA SHOW PASS \$30.00									
HORSE SHOW																																							
STALL \$400.00																																							
LATE \$75.00																																							
OFFICE/GROUNDS \$85.00																																							
NOMINATION LEVEL 1 \$75.00																																							
NOMINATION LEVEL 2 \$75.00																																							
NOMINATION LEVEL 3 \$125.00																																							
FACILITY \$85.00																																							
RV \$495.00																																							
4% CREDIT CARD																																							
Please refer to the rules and regulations for complete details.																																							
SEND ONLY NOMINATION AND STALL/TACK FEES WITH ENTRY TOTAL AMOUNT DUE																																							
STABLE WITH:																																							

RIDER/HANDLER (Mandatory)		OWNER/MANAGER (Mandatory)		TRAINER (Mandatory)	
Is Rider/Driver/Handler a U.S. citizen? (please circle)	Yes No	Signature: _____	Signature: _____	Signature: _____	
		Print Name: _____	Print Name: _____	Print Name: _____	
RIDER/HANDLER (Mandatory)		PARENT/GUARDIAN (Mandatory if rider/handler is a minor)		COACH (if applicable)	
Is Rider/Driver/Handler a U.S. citizen? (please circle)	Yes No	Signature: _____	Signature: _____	Signature: _____	
		Print Name: _____	Print Name: _____	Print Name: _____	

EMERGENCY CONTACT		ENTER ONLINE AT: <a href="http://www.westpalmsevents.com">www.westpalmsevents.com</a>	
Name: _____	PHONE: _____		



## September 1-4, 2022

Entries are due by August 8, 2022

[illegible]



## WAIVER AND RELEASE OF LIABILITY, ASSUMPTION OF RISK AND INDEMNITY AGREEMENT

For and in consideration of United States Equestrian Federation, Inc. dba US Equestrian ("USEF") allowing me, the undersigned, to participate in any capacity (including as a rider, driver, handler, vaulter, longeur, lessee, owner, agent, coach, official, trainer or volunteer) in a USEF sanctioned, licensed or approved event or activity, including but not limited to equestrian clinics, practices, shows, competitions and related or incidental activities and ("USEF Event" or "USEF Events"); I, for myself, and on behalf of my spouse, children, heirs and next of kin, and any legal and personal representatives, executors, administrators, successors, and assigns, hereby agree to and make the following contractual representations pursuant to this Agreement (the "Agreement"):

A. RULES AND REGULATIONS: I hereby agree that I have read, understand, and agree to be bound by all applicable Federation Bylaws, rules, and policies including the USEF Safe Sport Policy and Minor Athlete Abuse Prevention Policies (MAAPP) as published at [www.usef.org](http://www.usef.org), as amended from time to time.

B. ACKNOWLEDGMENT OF RISK: I knowingly, willingly, and voluntarily acknowledge the inherent risks associated with the sport of equestrian and know that horseback riding and related equestrian activities are inherently dangerous, and that participation in any USEF Event involves risks and dangers including, without limitation, the potential for serious bodily injury (including broken bones, head or neck injuries), sickness and disease (including communicable diseases), trauma, pain & suffering, permanent disability, paralysis and death; loss of or damage to personal property (including my mount & equipment) arising out of the unpredictable behavior of horses; exposure to extreme conditions and circumstances; accidents involving other participants, event staff, volunteers or spectators; contact or collision with other participants and horses, natural or manmade objects; adverse weather conditions; facilities issues and premises conditions; failure of protective equipment (including helmets); inadequate safety measures; participants of varying skill levels; situations beyond the immediate control of the USEF Event organizers and competition management; and other undefined, not readily foreseeable and presently unknown risks and dangers ("Risks").

### EQUINE ACTIVITY LIABILITY ACT WARNING:

CAUTION: HORSEBACK RIDING AND EQUINE ACTIVITIES CAN BE DANGEROUS. RIDE AT YOUR OWN RISK.

**Under the laws of most States, an equine activity sponsor or equine professional is not liable for any injury to, or the death of, a participant in equine activities resulting from the inherent risks of equine activities.**

C. ASSUMPTION OF RISK: I understand that the aforementioned Risks may be caused in whole or in part or result directly or indirectly from the negligence of my own actions or inactions, the actions or inactions of others participating in the USEF Events, or the negligent acts or omissions of the Released Parties defined below, and I hereby voluntarily and knowingly assume all such Risks and responsibility for any damages, liabilities, losses, or expenses that I incur as a result of my participation in any USEF Events. I also agree to be responsible for any injury or damage caused by me, my horse, my employees or contractors under my direction and control at any USEF Event.

D. WAIVER AND RELEASE OF LIABILITY, HOLD HARMLESS AND INDEMNITY: In conjunction with my participation in any USEF Event, I hereby release, waive and covenant not to sue, and further agree to indemnify, defend and hold harmless the following parties: USEF, USEF Recognized Affiliate Associations, the United States Olympic & Paralympic Committee (USOPC), USEF clubs, members, Event participants (including athletes/riders, coaches, trainers, judges/officials, and other personnel), the Event owner, licensee, and competition managers; the promoters, sponsors, or advertisers of any USEF Event; any charity or other beneficiary which may benefit from the USEF Event; the owners, managers, or lessors of any facilities or premises where a USEF Event may be held; and all directors, officers, employees, agents, contractors, and volunteers of any of the aforementioned parties (**Individually and Collectively, the "Released Parties" or "Event Organizers"**), with respect to any liability, claim(s), demand(s), cause(s) of action, damage(s), loss, or expense (including court costs and reasonable attorney fees) of any kind or nature ("**Liability**") which may arise out of, result from, or relate in any way to my participation in the USEF Events, including claims for Liability caused in whole or in part by the negligent acts or omissions of the Released Parties.

E. COMPLETE AGREEMENT AND SEVERABILITY CLAUSE: This Agreement represents the complete understanding between the parties regarding these issues and no oral representations, statements or inducements have been made apart from this Agreement. If any provision of this Agreement is held to be unlawful, void, or for any reason unenforceable, then that provision shall be deemed severable from this Agreement and shall not affect the validity and enforceability of any remaining provisions.

**I HAVE CAREFULLY READ THIS DOCUMENT IN ITS ENTIRETY, UNDERSTAND ALL OF ITS TERMS AND CONDITIONS, AND KNOW IT CONTAINS AN ASSUMPTION OF RISK, RELEASE AND WAIVER FROM LIABILITY, AS WELL AS A HOLD HARMLESS AND INDEMNIFICATION OBLIGATIONS.**

By signing below, I (as the participant or as the Parent/Legal Guardian of the minor identified below) hereby accept and agree to the terms and conditions of this Agreement in connection with my (or the minor's) participation in any USEF Event. If, despite this Agreement, I, or anyone on my behalf or the minor's behalf, makes a claim for Liability against any of the Released Parties, I will indemnify, defend and hold harmless each of the Released Parties from any such Liabilities as the result of such claim.

**The parties agree that this agreement may be electronically signed. The parties agree that the electronic signatures appearing on this agreement are the same as handwritten signatures for the purposes of validity, enforceability, and admissibility.**

☐ RIDER/DRIVER/HANDLER/VAULTER/LONGEUR ☐ OWNER ☐ TRAINER ☐ OFFICIAL ☐ STAFF ☐ VOLUNTEER ☐ COACH (IF APPLICABLE)

Signature: \_\_\_\_\_ Date: \_\_\_\_\_

Print Name: \_\_\_\_\_

Parent/Guardian Signature: (Required if Rider/Driver/Handler/Vaulter/Longeur is a minor) \_\_\_\_\_ Date: \_\_\_\_\_

Print Parent//Guardian Name: \_\_\_\_\_ Emergency Contact Phone No. \_\_\_\_\_

6.17.20



Serving West Coast Equestrians Since 1986

# RIDING

CALIFORNIA RIDING MAGAZINE



Pick up your **FREE** copy of the leading source of Equestrian News and information at your California tack & feed store.



2021 California  
Horseman's  
Directory

California's #1 Equine Directory  
**FREE** at your local tack & feed store  
*2021 edition coming soon!*



888.272.0472 | [info@ridingmagazine.com](mailto:info@ridingmagazine.com) | [info@cahorse.com](mailto:info@cahorse.com)


[www.ridingmagazine.com](http://www.ridingmagazine.com) | [www.cahorse.com](http://www.cahorse.com)





LA Summer Classic  
August 25-28, 2022  
Tentative Schedule

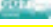


	WEDNESDAY	THURSDAY	FRIDAY	SATURDAY	SUNDAY
Equidome	Warm Up Vouchers Available in the show office. Arena open for Warm Ups from 11:00-4:00	204 .90m IV	208 1.00m IIb	276 .65m IV	278 .65m Jr/Am IV
		203 .90m IIb	214 1.10m II.1	269 .65m Jr/Am IV	266 .70m IV
		207 1.0m IIb	220 1.20m II.1	211 .80m IIb	225 .80m Pre-Child/Adult IIb
		213 1.10m IIb	253 1.30m II.1	224 .80m Pre-Child/Adult IIb	229 .90m Modified Child/AA IIb
		219 1.20m IIb	258 1.40m IIb	206 .90m II.1	232 Pony Jumper IIb
			268 .65m Jr/Am IV	228 .90m Mod Child/Adult II.1	238 1.0m Low Child/Adult IIb
		270 1.30m Med Jr/Am IIb	202 .80m IV	210 1.00m IIb	407 Low Child/Adult Classic IIb
		273 1.40m High Jr/Am IIb	223 .80m Pre-Child/Adult IIb	237 1.0m Low Child/AA IIb	408 Child/AA Classic IIb
		421 \$3,500 GGT Footing 1.30m IIb	205 .90m IV	231 Pony Jumper IIb	411 Low Junior/Amateur Classic 1.20m IIb
			227 .90m Mod Child/Adult IIb	242 1.10m Children's II.1	271 1.30m Med Jr/Am II.1
Allen Arena East		Not To start before 2:00	236 1.0m Low Child/Adult IIb	246 1.10m Adult II.1	274 1.40m High Jr/Am II.1
		240 1.10m Children's IIb	230 Pony Jumper IIb	250 1.20m Low Jr/Am II.1	
		244 1.10m Adult IIb	241 1.10m Children's IIb	255 1.35m II.1	
		248 1.20m Low Jr/Am IIb	245 1.10m Adult IIb	420 Summertime Grand Prix 1.30m IIa	
			249 1.20m Low Jr/Am IIb		
Hap Hansen Arena	Warm Up Vouchers Available in the show office. Arena open for Warm Ups from 10:00-5:00	267 .65m IV	277 .65m IV	280.281 Beginnine Child/Adult Hunter	399 2'6" Child/Adult Eq Flat
		263 .70m IV	265 .70m IV	125.126 Child/Adult Hunter 2'6"	397.398 2'6" Child/Adult Eq O/F 2'6"
		264 .70m IV	360 Equitation Flat 14 & Under	187,188,189 Walk Trot Pleasure	396 Rusty Stirrup Eq Flat
		200 .80m IV	363 Equitation Flat 15-17	176 Trot Pole Eq Flat	393 Long Stirrup Eq Flat
		201 .80m IIb	361,362 Equitation O/F 14 & Under	174, 175 Trot Pole Equitation	390 Short Stirrup Eq Flat
		316 LAHJA Silver Senior Medal 3'- Final 2022 Qualifier	364,365 Equitation O/F 15-17	191, 192,193 Cross Rail Hunter	394,395 Rusty Stirrup Eq O/F 2'
		315 LAHJA Silver Junior Medal 3'- Final 2022 Qualifier	366 Equitation Flat 18 & Over	194 Cross Rail Hunter U/S	391,392 Long Stirrup Eq O/F 2'
		354 CPHA Style of Riding Medal	367,368 Equitation O/F 18 & Over	338 THIS Children's Medal	388,389 Short Stirrup Eq O/F 2'
		356 USHJA Jumping Seat Medal	335 Onondarka Medal	339 Ariat Adult Medal	170,171,172 Walk Trot Equitation
		330 WCE Medal	331 CPHA Foundation	317 LAHJA Gold Medal 3'3"	195,196,197 Cross Rail Equitation
East Ring	Warm Up Vouchers Available in the show office. Arena open for Warm Ups from 9:00-5:00	17 Conformation Hunter Model	121 USHJA Hunter 3'	604 LAHJA Silver Medal Final Senior Round 2 & Work Off	70,71** 3'3" A/O Hunter 18-35
		118,119,120 USHJA Hunter 3'	40,41 Green Hunter 3'	601 LAHJA Silver Medal Final Junior Round 2 & Work Off	184,185** 3'3" A/O Hunter 36 & +
		38,39 Green Hunter 3'	45,46 Green Hunter 3'3"	153,154* 3'3" Small Junior Hunter	60,61** A/O Hunter 18-35
		122 USHJA Hunter 3' U/S	30,31 Performance Hunter 3'3"	163,164* 3'3" Large Junior Hunter	65,66** A/O Hunter 36 & +
		42 Green Hunter 3' U/S	35,36 Performance Hunter 3'6"	157 3'3" Small Junior Hunter U/S	50,51** Small Junior Hunter
		28,29* Performance Hunter 3'3"	20,21 Conformation Hunter	167 3'3" Large Junior Hunter U/S	55,56** Large Junior Hunter
		43,44 Green Hunter 3'3"	3,4 Green Hunter 3'6"	48,49* Small Junior Hunter	155,156** 3'3" Small Junior Hunter
		47 Green Hunter 3'3" U/S	8,9 Green Hunter 3'9"	53,54* Large Junior Hunter	165,166** 3'3" Large Junior Hunter
		32 Performance Hunter 3'3" U/S	25,26 High Performance	52 Small Junior Hunter U/S	405 3'3" & 3'6" Junior/AO Hunter Classic
		33,34* Performance Hunter 3'6"	502 LAHJA Silver Medal Final Warm Up	57 Large Junior Hunter U/S	324 PCHA Horsemanship 2'9"



LA Labor Day Classic  
September 1-4, 2022  
Tentative Schedule



Equidome	WEDNESDAY	THURSDAY	FRIDAY	SATURDAY	SUNDAY
	Warm Up Vouchers Available in the show office. Arena open for Warm Ups from 11:00-4:00	204 .90m IV 203 .90m ILb  207 1.0m ILb 213 1.10m ILb 219 1.20m ILb  270 1.30m Med Jr/Am ILb  273 1.40m High Jr/Am ILb <b>421 \$3,500 GGT Footing 1.30m ILb</b>  <b>Not To start before 2:00</b>  240 1.10m Children's ILb 244 1.10m Adult ILb 248 1.20m Low Jr/Am ILb	208 1.00m ILb 214 1.10m IL.1 220 1.20m IL.1 253 1.30m IL.1 258 1.40m ILb  268 .65m Jr/Am IV 202 .80m IV  223 .80m Pre-Child/Adult ILb 205 .90m IV  227 .90m Mod Child/Adult ILb  236 1.0m Low Child/Adult ILb  230 Pony Jumper ILb 241 1.10m Children's ILb 245 1.10m Adult ILb 249 1.20m Low Jr/Am ILb	276 .65m IV 269 .65m Jr/Am IV 211 .80m ILb 224 .80m Pre-Child/Adult ILb 206 .90m IL.1  228 .90m Mod Child/Adult IL.1  210 1.00m ILb  237 1.0m Low Child/AA ILb  231 Pony Jumper ILb 242 1.10m Children's IL.1 246 1.10m Adult IL.1 250 1.20m Low Jr/Am IL.1 255 1.35m IL.1 <b>420 Labor Day Grand Prix 1.30m ILa</b>	278 .65m Jr/Am IV 266 .70m IV 225 .80m Pre-Child/Adult ILb 229 .90m Modified Child/AA ILb  232 Pony Jumper ILb 238 1.0m Low Child/Adult ILb 407 Low Child/Adult Classic ILb 408 Child/AA Classic ILb 411 Low Junior/Amateur Classic 1.20m ILb  271 1.30m Med Jr/Am IL.1 274 1.40m High Jr/Am IL.1
Allen Arena East		267 .65m IV 263 .70m IV 264 .70m IV  200 .80m IV 201 .80m ILb 316 LAHJA Silver Senior Medal 3'- Final 2022 Qualifier 315 LAHJA Silver Junior Medal 3'- Final 2022 Qualifier 354 CPHA Style of Riding Medal 356 USHIA Jumping Seat Medal 330 WCE Medal	277 .65m IV 265 .70m IV  360 Equitation Flat 14 & Under  363 Equitation Flat 15-17  361,362 Equitation O/F 14 & Under 364,365 Equitation O/F 15-17 366 Equitation Flat 18 & Over 367,368 Equitation O/F 18 & Over 335 Onondarka Medal 331 CPHA Foundation 328 CPHA Senior Medal 327 CPHA Junior Medal	290,281 Beginning Child/Adult Hunter 125,126 Child/Adult Hunter 2'6" 187,188,189 Walk Trot Pleasure  176 Trot Pole Eq Flat  174, 175 Trot Pole Equitation 191, 192,193 Cross Rail Hunter 194 Cross Rail Hunter U/S 338 THIS Children's Medal 339 Ariat Adult Medal 317 LAHJA Gold Medal 3'3" 333 Foxfield Medal 334 USEF Adult Medal 326 ASPCA Maclav 332 Dover Saddlery USEF Medal	282,283 Beginning Child/Adult Hunter 2'3" 284 Beginning Child/Adult Hunter U/S 396 Rusty Stirrup Eq Flat  393 Long Stirrup Eq Flat  390 Short Stirrup Eq Flat 394,395 Rusty Stirrup Eq O/F 2' 391,392 Long Stirrup Eq O/F 2' 388,389 Short Stirrup Eq O/F 2' 170,171,172 Walk Trot Equitation 195,196,197 Cross Rail Equitation 198 Cross Rail Equitation Flat 337 PCHA Adult Medal 329 PCHA Adult Horsemanship Medal 18-34 336 PCHA Horsemanship Class
Hap Hansen Arena	Warm Up Vouchers Available in the show office. Arena open for Warm Ups from 10:00-5:00	17 Conformation Hunter Model  118,119,120 USHJA Hunter 3' 38,39 Green Hunter 3' 122 USHJA Hunter 3' U/S  42 Green Hunter 3' U/S 28,29* Performance Hunter 3'3" 43,44 Green Hunter 3'3" 47 Green Hunter 3'3" U/S 32 Performance Hunter 3'3" U/S 33,34* Performance Hunter 3'6" 18,19 Conformation Hunter  1,2* Green Hunter 3'6"  22 Conformation Hunter U/S 5 Green Hunter 3'6" U/S 37 Performance Hunter 3'6" U/S 6,7* Green Hunter 3'9" 23, 24* High Performance 27 High Performance U/S 10 Green Hunter 3'9" U/S	121 USHJA Hunter 3'  40,41 Green Hunter 3' 45,46 Green Hunter 3'3" 30,31 Performance Hunter 3'3"  35,36 Performance Hunter 3'6" 20,21 Conformation Hunter 3,4 Green Hunter 3'6" 8,9 Green Hunter 3'9" 25, 26 High Performance 503 LAHJA Gold Medal Final Warm Up <b>414 \$2,500 USHJA National Hunter Derby</b>  608 LAHJA Gold Medal Final Round 1	609 LAHJA Gold Medal Final Round 2 & Work Off  153,154* 3'3" Small Junior Hunter 163,164* 3'3" Large Junior Hunter  157 3'3" Small Junior Hunter U/S 167 3'3" Large Junior Hunter U/S 48,49* Small Junior Hunter 53,54* Large Junior Hunter 52 Small Junior Hunter U/S 57 Large Junior Hunter U/S 58,59* A/O Hunter 18-35  63,64* A/O Hunter 36 & +  62 A/O 18-35 U/S 67 A/O 36 & Over U/S 68,69* 3'3" A/O Hunter 18 - 35 182, 183* 3'3" A/O Hunter 36 & + 72 3'3" A/O Hunter U/S 18 - 35 186 3'3" A/O Hunter U/S 36 & + 88,89 Children's 13 & Under 93,94 Children's Hunter 14-17 98,99 Adult Hunter 18-35 103,104 Adult Hunter 36 & Over	70,71** 3'3" A/O Hunter 18-35  184,185** 3'3" A/O Hunter 36 & + 60,61** A/O Hunter 18-35 65,66** A/O Hunter 36 & +  50,51** Small Junior Hunter 55,56** Large Junior Hunter 155,156** 3'3" Small Junior Hunter 165,166** 3'3" Large Junior Hunter 405 3'3" & 3'6" Junior/AO Hunter Classic 324 PCHA Horsemanship 2'9" 387 2'9" Child/Adult Eq Flat  385, 386 2'9" Child/Adult Eq O/F  340 CPHA Child/Adult Medal 102 Adult Hunter 18-35 U/S 107 Adult Hunter 36 & Over U/S  100,101** Adult Hunter 18-35 105,106** Adult Hunter 36 & Over 92 Children's Hunter 13 & Under U/S 97 Children's Hunter 14-17 U/S 90,91** Children's Hunter 13 & Under 95,96** Children's Hunter 14-17 402 Children's/Adult Hunter Classic
East Ring	Warm Up Vouchers Available in the show office. Arena open for Warm Ups from 9:00-5:00	113,114,115 USHJA Hunter 2' 117 USHJA Hunter 2' U/S 148,149,150 USHJA Hunter 2'3" 152 USHJA Hunter 2'3" U/S  108,109 USHJA Hunter 2'6" 112 USHJA Hunter 2'6" U/S 11,12,13 USHJA Hunter 2'9" 15 USHJA Hunter 2'9" U/S	116 USHJA Hunter 2' 110,111 USHJA Hunter 2'6" 14 USHJA Hunter 2'9" 123,124 Child/Adult Hunter 2'6" 127 2'6" Child/Adult Hunter U/S 343 CPHA Horsemanship Medal 132 2'9" Child/Adult Hunter U/S 128,129 Child/Adult Hunter 2'9" 323 LAHJA Bronze Medal 2'6"/2'9"- Final Qualifier of 2022 322 LAHJA Copper Medal 2'/2'3"  143,144 Rusty Stirrup Hunter 2' 138,139 Long Stirrup Hunter 2' 133,134 Short Stirrup Hunter 2'  290,291,292 Children's Pony Hunter  293 Children's Pony Hunter U/S	130,131 Child/Adult Hunter 2'9" 147 Rusty Stirrup Hunter U/S 142 Long Stirrup Hunter U/S 137 Short Stirrup Hunter U/S  135,136 Short Stirrup Hunter 2' 140,141 Long Stirrup Hunter 2' 145,146 Rusty Stirrup Hunter 2' 73,74* Sm Pony Conformation, Sm Pony Handy 78,79* Med Pony Conformation, Med Pony Handy 83,84* Lg Pony Conformation, Lg Pony Handy  77 Small Pony Hunter U/S  82 Medium Pony Hunter U/S  87 Large Pony Hunter U/S 501 LAHJA Bronze Medal Warm Up 611 LAHJA Bronze Medal Final Round 1	612 LAHJA Bronze Medal Final Round 2 & Work Off 416 The Plaid Horse Carousel Derby Ch/Ad 399 2'6" Child/Adult Eq Flat 397,398 2'6" Child/Adult Eq O/F 2'6"  401 Local Hunter Derby 2' 349 USEF Pony Medal  75,76** Small Pony Hunter 80,81** Medium Pony Hunter 85,86** Large Pony Hunter 404 Pony Hunter Classic
	(*) Handy Round				
	(**) First Classic Round				
	HIGHLIGHT = OUTREACH				
	Tables are tentative				



Pacific Coast Horse Shows Association  
P.O. Box 5570, Glendale, CA 91221  
(818)842-8194  
pcha@pchorseshows.org

TODAYS DATE \_\_\_\_\_

### Membership Application

\_\_\_\_ NEW \_\_\_\_ RENEWAL

\_\_\_\_ SENIOR/FARM: \$75 \_\_\_\_ JUNIOR: \$55.00 \_\_\_\_ LIFE: \$1,000.00

\_\_\_\_ SENIOR/FARM 3 YEARS: \$200.00 \_\_\_\_ JUNIOR FOR 3 YEARS: \$150.00

\*no increase if a junior becomes a senior during 3 year plan

CHECK ALL THAT APPLY: \_\_\_\_ PROFESSIONAL \_\_\_\_ AMATEUR \_\_\_\_ HUNTER/JUMPER \_\_\_\_ WESTERN  
\_\_\_\_ STEWARD \_\_\_\_ SHOW MANAGER \_\_\_\_ SHOW CONTACT

NAME \_\_\_\_\_

DATE OF BIRTH REQUIRED \_\_\_\_\_

ADDRESS \_\_\_\_\_

CITY/STATE \_\_\_\_\_ ZIP \_\_\_\_\_

TELEPHONE \_\_\_\_\_ E-MAIL \_\_\_\_\_

NAME OF TRAINER(MUST BE A MEMBER) \_\_\_\_\_

CREDIT CARD \_\_\_\_\_ CHECK# \_\_\_\_\_

EXPIRATION DATE \_\_\_\_\_ SECURITY CODE \_\_\_\_\_

NAME ON CARD \_\_\_\_\_

BILLING ADDRESS \_\_\_\_\_

**RIDER, HORSE, OWNER AND TRAINER MUST ALL BE MEMBERS TO COMPETE FOR POINTS**



Pacific Coast Horse Shows Association  
P.O. Box 5570, Glendale, CA 91221  
(818)842-8194  
pcha@pchorseshows.org

### HORSE REGISTRATION

Horse must be member to compete for year end points

\_\_\_\_ HUNTER/JUMPER \_\_\_\_ WESTERN

\_\_\_\_ YEARLY REGISTRATION: \$40.00 \_\_\_\_ LIFETIME REGISTRATION: \$100.00

SHOW NAME OF HORSE \_\_\_\_\_

COLOR \_\_\_\_\_ SEX \_\_\_\_\_ HT \_\_\_\_\_ YR. FOALED \_\_\_\_\_ BREED \_\_\_\_\_

OWNER OF HORSE(MUST BE A MEMBER) \_\_\_\_\_

\_\_\_\_ SHOW NAME CHANGE:\$10.00

FORMER NAME \_\_\_\_\_

\_\_\_\_ TRANSFER OF OWNERSHIP: \$10.00

FORMER OWNER \_\_\_\_\_





## LOS ANGELES HUNTER JUMPER ASSOCIATION

480 W. Riverside Drive, Suite 1

Burbank, California 91506

[www.lahja.org](http://www.lahja.org) — 818.840.9337

### 2022 MEMBERSHIP APPLICATION

\$70 JUNIOR ☐ \$70 SENIOR ☐ \$35 \*\*INTRO ☐ \$700 LIFE ☐ \$25 additional HORSE REG: ☐

\* \$5 convenience fee will be charged for credit card payment

**\*\*Please note**—Intro members are not eligible to ride in medal classes or receive points towards year-end awards.

New ☐ Renewal ☐ NAME \_\_\_\_\_

E-mail address for parent of junior members \_\_\_\_\_

LAHJA # \_\_\_\_\_ USEF # \_\_\_\_\_ Date of Birth (**required**) \_\_\_\_/\_\_\_\_/\_\_\_\_

ADDRESS \_\_\_\_\_

CITY \_\_\_\_\_ STATE \_\_\_\_\_ ZIP \_\_\_\_\_

PHONE (\_\_\_\_) \_\_\_\_\_ e-mail \_\_\_\_\_

#### Payment information

Credit Card Visa ☐ MC ☐ # \_\_\_\_\_ Check # \_\_\_\_\_

Name on Card \_\_\_\_\_

Billing Address \_\_\_\_\_

Expiration Date \_\_\_\_\_ CVV Code \_\_\_\_\_

HORSE(S) NAME(S) (**first horse included with membership, additional horses at \$25**)

**\*\*Horse Owner must be a current member for points to count\*\***

\_\_\_\_\_ Height: \_\_\_\_\_ USEF #: \_\_\_\_\_

\_\_\_\_\_ Height: \_\_\_\_\_ USEF #: \_\_\_\_\_

TRAINER'S NAME \_\_\_\_\_

(YOUR TRAINER MUST BE A LAHJA MEMBER IF YOU RIDE IN ANY LAHJA MEDAL CLASS)



**Don't just stand there!**

---

**Order your subscription  
to Sidelines today!**

**SIDELINES**



SIDELINES IS DEVOTED TO THE PEOPLE AND PERSONALITIES THAT MAKE THE HORSE WORLD EXCITING.

# RIDING = BREATHING

## Elite Equestrian® magazine

*America's Favorite Equestrian Lifestyle Magazine, Published Since 2008.*



*Featuring Equine Related Fashion, Art, Health, Tack and Training For Multiple Disciplines. Find Your Hard Copy At A Shows & Quality Tack Stores  
Read Globally Online • Free On-line Subscriptions*

**R**iding a horse is not a gentle hobby,  
to be picked up and laid down like  
a game of solitaire.  
**I**t is a grand passion.

-Ralph Waldo Emerson

Ask About  
Our NEW  
UAE Edition!

[www.EliteEquestrianMagazine.com](http://www.EliteEquestrianMagazine.com)

To request on-line subscriptions and for media kit inquiries, email [info@eliteequestrian.us](mailto:info@eliteequestrian.us)



# RULES, REGULATIONS & GENERAL INFORMATION

1. These competitions are governed and approved by the United States Equestrian Federation. Every class offered herein which is covered by the rules and specifications of the current USEF Rule Book will be conducted and judged in accordance therewith. To the extent there is a conflict between the prize list and the USEF rules, USEF rules will prevail. Senior active and junior active members shall be eligible to participate in all classes at Regular Competitions, Eventing Competitions at the Modified Level or above and Combined Driving Competitions at the Advanced Level, Dressage, Reining and Vaulting Competitions and Endurance Rides. A non-member may participate as a handler, rider, driver, owner, lessee, agent, coach or trainer at Regular Competitions, Eventing Competitions, Dressage Competitions, Reining Competitions and Combined Driving Competitions upon payment of a \$45 Show Pass fee. Participants in the following classes are exempted from the Requirements of this rule: 1) leadline; 2) exhibitions; 3) games and races; 4) classes for 4-H members; 5) walk trot (exception: Friesian performance FR218) and academy classes (academy classes are classes limited to horses used regularly in a lesson program); 6) USDF introductory level tests, pas de deux and quadrille classes; 7) NRHA Endorsed Reining Competitions. 8) Opportunity classes, 9) citizens of other nations who have proof, in English, of current membership in good standing of their own National Federation, 10) USEA beginner novice division; and 11) assistant handlers in Dressage Sport Horse Breeding classes.

**REMINDER:** All USEF Life and Senior Active members, as well as participants who have regular contact with minor athletes, are required to comply with the U.S. Center for SafeSport training requirement to be eligible to participate in the competition. All participants must adhere to the U.S. Center for SafeSport Code, USEF Safe Sport Policy, and the Minor Athlete Abuse Prevention Policies. More information about these can be found at [www.usef.org](http://www.usef.org).

**2. USEF ENTRY AGREEMENT:** By entering a Federation-licensed Competition and signing this entry blank as the Owner, Lessee, Trainer, Manager, Agent, Coach, Driver, Rider, Handler, Vaultor or Longueur and on behalf of myself and my principals, representatives, employees and agents, I agree that I am subject to the Bylaws and Rules of The United States Equestrian Federation, Inc. (the "Federation"). I agree to be bound by the Bylaws and Rules of the Federation and of the competition. I will accept as final the decision of the Hearing Committee on any question arising under the Rules, and agree to release and hold harmless the competition, the Federation, their officials, directors and employees for any action taken under the Rules. I represent that I am eligible to enter and/or participate under the rules, and every horse I am entering is eligible as entered. I also agree that as a condition of and in consideration of acceptance of entry, the Federation and/or the competition may use or assign photographs, videos, audios, cablecasts, broadcasts, internet, film, new media, or other likenesses of me and my horse taken during the course of the competition for the promotion, coverage or benefit of the competition, sport, or the Federation. Those likenesses shall not be used to advertise a product and they may not be used in such a way as to jeopardize amateur status. I hereby expressly and irrevocably waive and release any rights in connection with such use, including any claim to compensation, invasion of privacy, right of publicity, or to misappropriation. The construction and application of Federation rules are governed by the laws of the State of New York, and any action instituted against the Federation must be filed in New York State. See GR 908.4. The Horse Show Committee reserves the right to itself to interpret all questions and conditions in regard to or arising out of, or incident to the show without claims for damages or recourse of any kind. All questions not covered in these Rules and Regulations shall be decided by the Horse Show Management; its decision to be final. The Horse Show Management reserves to itself the right to limit entries in any class, section or division, to refuse, accept conditionally, or to cancel any

entries, disqualify any riders or exhibitors, prohibit exhibition of entries, and cancel award prizes, without any claim for damages; to change any course, to add a dotted line, to cancel or combine any unfilled classes, or to reschedule classes, after due notice to exhibitors; to change rings or rotate judges; to change specifications in Jumper classes as competition warrants. Every horse entered herein for competition will be under the control of the Horse Show Management, but the Show Management will in no case be responsible for any loss or damage that may occur, and it shall be a condition of entry that each exhibitor shall hold the horse show and the officials, employees, directors, officers, sponsoring entities of the horse show and the facilities at which the horse show is held blameless for any loss or accident to his horse(s), employee(s), or equipment which may occur from sickness, fire or other cause. Every class offered herein which is covered by the rules and specifications of the current USEF Rule Book will be conducted and judged in accordance therewith. In the event of a cancellation due to severe weather or other emergency, refunds of entry fees must be made upon request by the exhibitor within 30 days of the cancellation.

**USEF WAIVER AND RELEASE OF LIABILITY, ASSUMPTION OF RISK AND INDEMNITY AGREEMENT:** Effective immediately, all individuals on the property will be required to sign the USEF Waiver and Release of Liability, Assumption of Risk and Indemnity Agreement. The Agreement will be available on our website ([www.westpalmsevents.com](http://www.westpalmsevents.com)) and can be executed and signed electronically.

**3. CONDITIONS OF ENTRY:** Every horse entered for competition will be under the control of the Horse Show Management, but Horse Show Management will, in no case, be responsible for any loss or damage that may occur, and it shall be a condition of entry that each exhibitor shall defend, indemnify and hold harmless the Horse Show and its officials, employees, directors, officers, Los Angeles Equestrian Center, West Palms Event Management, and its Sponsors, etc for any loss or accident to his horse, horses, employees or equipment which may occur from sickness, fire or other cause.

**4. MANAGEMENT:** Horse Show Management reserves the right to interpret all questions and conditions in regard to or arising out of an incident to the show without claims for damages or recourse of any kind. All questions not covered in these Rules and Regulations shall be decided by Horse Show Management-their decision to be final. Horse Show Management reserves the right to refuse, accept conditionally or to cancel any entries, disqualify riders or exhibitors, prohibit exhibition of entries and cancel award prizes, without claim for damages; to change any course, to cancel or combine any unfilled classes, or to reschedule classes, after due notice to exhibitors; to change rings or rotate or change judges and officials; to change specifications in jumper classes in order to facilitate the time schedule. Management reserves the right to combine or cancel. Management reserves the right to limit entries in a class. Refused entries will be returned.

**5. ASSUMPTION OF RISK:** By signing the entry blank, the Owner, Lessee, Trainer, Manager, Agent, Coach, Driver, Rider, Handler, Vaultor or Longueur acknowledges that horseback riding, particularly jumping, is a dangerous activity and involves inherent risks that may cause serious injury and in some cases death because of the unpredictable nature and irrational behavior of horses, regardless of their training and past performance and expressly assumes all such inherent risks whether identified herein, in the entry blank, or in the Federation Rules and Regulations. A horse, without warning or any apparent cause, can buck, stumble, fall, rear, bite, kick, run, make unpredictable movements, spook, jump obstacles, step on a person's foot or push a person-all of which may cause the rider or observer to fall or be jolted, resulting in serious injury or death. A horse may also become loose and cause injury to an observer



# RULES, REGULATIONS & GENERAL INFORMATION

or rider or to another horse—a loose horse can run at full gallop in a panic and run into objects or persons or other horses. The Show Ground Facilities are bordered by highways/roads and thus noise from traffic and other sources occurs that can and will cause a horse to unexpectedly spook or react quickly. The Show Ground Facilities contain roads or driveways that are traversed by cars, golf carts, tractors, trailers and heavy equipment all of which may spook a horse. The above warnings and risks are meant as an example of some of the risks that are inherent and may be encountered but it is agreed this is not an exhaustive list and there are numerous additional conditions and/or events that may result in injuries while participating in the Competition and/or being present on the Show Ground Facility.

## 6. THE FOLLOWING IS REQUIRED FOR EACH ENTRY:

- A. All horses on grounds must be registered on an entry blank including horses not entered in classes. One entry blank per horse.
- B. Entry forms must be complete with owner, riders, trainers and payee information including association membership numbers.
- C. Date of Birth of all minor exhibitors.
- D. Signatures of owner, riders, trainer and parent or guardian of minor exhibitors. Parents or guardians of minor exhibitors shall hold the Horse Show, West Palms Event Management, Inc., Los Angeles Equestrian Center and staff harmless for injury to such minor(s).
- E. Entries must be submitted electronically through [showgroundslive.com](http://showgroundslive.com).
- F. For all horses include Nomination and Stall Fees as a deposit. Make checks payable to West Palms Event Management or complete the credit card information and sign on the entry blank. If credit card information is given, the credit card authorization form must be filled out and accompany the entry.

**7. PAYMENT:** An open check or credit card is required at time of check in before numbers will be issued. See 6F for deposit information. A 4% credit card fee will be applied to all credit card transactions and is nonrefundable once the card has been processed.

**8. REFUNDS:** Request for a refund of the deposit must be in writing and received before the closing date of entries and a \$35.00 fee will be deducted. The nomination and stall fees are not refundable under any condition after the close of entries. Credit Card fees are nonrefundable at any time after the card has been processed.

**9. POST ENTRIES:** Entries received with payment after entries are due but before the Monday of each show will pay a \$75.00 late fee. All entries received at the show will pay a \$150.00 late fee.

**10. ADDS/SCRATCHES:** All adds must be made by 4:00 pm the day prior to each class. No entries will be accepted for a class scheduled on the same day. **In the unusual case the time schedule allows a management approved add the day of a class, the entry fee will be double.** Horses and riders who go in a class without entering will pay a fee of \$50.00. All scratches must be received in the show office before the start of the class in writing to be considered for a refund; scratches via phone call or at the gate will NOT be considered. In divisions that are entered by complete section, no refund will be considered if the horse shows in any class of the division. The only other refunds given will be for cancellation of a class by Management, overpayment of fees, or the rejection of entries because of ineligibility or lack of stall space.

**11. RAIN:** In the event of rain prior to the Show, it is the riders' responsibility to call Show Management to determine whether the show is canceled.

**12. RESPONSIBILITY OF PAYMENT OF SERVICES AND SUPPLIES:** All owners and exhibitors will be held responsible for any damage incurred by them, their animals, agents, or employees, to stalls, buildings and other properties on the Show grounds and shall be billed accordingly. All bills for veterinary, farrier services and feed/bedding are due and payable during the Show. Management reserves the right to deduct any unpaid veterinary, farrier and feed/bedding bills from premium money due the exhibitor. Any exhibitor not meeting his obligations to the official Show Veterinarian, farrier and feed/bedding vendor will be termed an undesirable exhibitor and entries from that exhibitor may not be accepted at subsequent shows.

**13. RETURNED CHECKS/CHARGEBACKS:** Checks returned by the bank or Credit card chargebacks for any reason are regarded as a most serious offense and will be handled according to the following procedure: A \$50 penalty will be assessed for each returned check or chargeback OR 10% of the face value of the check or chargeback, whichever is greater. Accounts will be given ten (10) days to be paid in full with cash or cash equivalent or they will be reported to the U.S. Equestrian Federation, Inc., PCHA and other appropriate association(s) for further disciplinary action. Checks will not be deposited a second time. In the case that the debt is not cleared within 30 days of the conclusion of the show, all prize money will be forfeited.

**14. UNPAID CHARGES:** Any exhibitor leaving the show with an unpaid balance will be billed for these charges and a \$50 billing fee will be added to the total due. Until these charges are settled, all further entries of rider and owner will be returned.

**15. SAFETY REGULATIONS:** Unauthorized use of the light fixtures will result in removal of your appliance. Smoking or open flame devices are not permitted within the stables. Keep flammable decorations to a minimum. Electrical outlets are provided.

**16. CLOSED RINGS:** Horses are not permitted in any ring where a course is set unless otherwise given permission from management, or when there is equipment in the ring. Please check with the show office for information regarding schooling policies. Horses and riders must yield immediately for watering and dragging. Violations of the above mentioned rules may be considered cause for elimination from the show.

**17. RING INFORMATION:** All warm up and competitions arenas contain either geotextile or sand footing. Dimensions are:

**Los Angeles Equestrian Center:** Hap Hansen Arena-150' x 300', Equidome-150' x 300', East Ring-135' x 285', Allen Arena East & West-150' x 300'

**18. STABLING:** LAEC permanent stalls and tack rooms will be available for \$400.00, 10' x 12' with top and bottom doors and dirt flooring. **Only shavings will be permitted for bedding of stalls. Exhibitors may be assessed a disposal fee for anything other than shavings.** However, we cannot guarantee stabling for post entries, and we recommend that your entries be received before the closing date. The show office handles all stall transactions and charges. Private transactions involving stalls are not permitted. Management reserves the right to limit tack stalls. Hauling in is not permitted. All horses entered must either purchase a show stall or board at the facility. Stall fees are not refundable after the entry due date. **IF YOU LEAVE ANYTHING BEHIND IN THE STABLE AREA, YOU WILL BE BILLED A MINIMUM OF \$500. IF YOU LEAVE SYRINGES ANYWHERE OTHER THAN THE RECEPTACLES PROVIDED YOU WILL BE BILLED \$500 PER SYRINGE. THIS WILL BE STRICTLY ENFORCED.**

# RULES, REGULATIONS & GENERAL INFORMATION

**19. ROLEX/USEF RANKING LIST:** Please visit [ryegate.com/uset.php](http://ryegate.com/uset.php) Upcoming Classes to determine which classes will be included in the Rolex Computer Ranking List.

**20. FEED AND BEDDING:** Pre-orders and onsite orders must be submitted through [www.westpalmsevents.com](http://www.westpalmsevents.com). (online order) Orders must be made by NOON, each day for same-day delivery through the website.

**21. TIES:** In all jumper classes, ties involving first place will be jumped off. All other ties will be determined by time taken to complete the first round.

**22. SCHOOLING SUPERVISION:** Gate Stewards are schooling supervisors and have absolute authority to scratch riders who do not follow USEF, FEI or appropriate association schooling rules.

**23. NUMBERS:** Management will provide a number card for each competitor which shall be worn clearly visible to the judge at all times when in competition. Riders wearing the wrong number or no number at all MAY be eliminated from the class by the judges.

**24. DOGS:** Dogs and other pets must be confined to the Stable Area. Dogs must be on a leash at all times. Stray dogs and dogs in violation will be impounded by Animal Control authorities. Under no circumstances are dogs allowed at the arenas.

**25. VACCINATION INFORMATION:** Beginning December 1, 2015, all horses entering the grounds of a Federation- licensed competition must be accompanied by documentation of Equine Influenza Virus and Equine Herpes Virus (Rhinopneumonitis) vaccinations within six months prior to entering the stables. The management in consultation with respected veterinarians and local animal health authorities strongly recommend and urge that all horses attending the show follow a two-part West Nile vaccination protocol consisting of a primary vaccination, followed by a booster 3-6 weeks later. Should you have any questions please contact the CDFA. Please refer to the [www.westpalmsevents.com](http://www.westpalmsevents.com) and the show office for current Equine Health and Biosecurity measures.

**26. ARRIVAL AND DEPARTURE:** Please check with management on the current Horse health requirements for horse arrival times. **LA Summer:** Stalls will be available at 10:00 on Tuesday, August 23 for setting up. All stalls must be vacated by Sunday, August 28 unless staying for the second week.

**LA Labor Day Classic:** Stalls will be available at 10:00 on Tuesday, August 30 for setting up. All stalls must be vacated by Sunday, September 4.

**27. MAIL/TELEPHONE:** All mail during the show should be sent to exhibitors as follows: c/o Horse Show Office, Los Angeles Equestrian Center: 480 Riverside Dr., Burbank, CA 91506  
Phone numbers: (818) 987-3336.

**28. PROTEST:** Any USEF member lodging a protest must first deposit \$200 (non-members \$300) payable to West Palms Event Management with the Show Secretary, which sum shall be forfeited to the Horse Show, if same is not sustained. All protests must be in writing, signed by the protester and filed within 48 hours of the occurrence of the alleged violation. A protest may be filed with the Show Manager, the Federation Hearing committee or Show Secretary. If the protest is sustained, the entries standing next in award shall be moved up accordingly. See USEF GR603 and GR603.1.

**29. HELMET RULE:** It is compulsory for all persons at Federation licensed hunter, jumper or hunter/jumper competitions when mounted anywhere on the competition grounds, to wear properly fastened protective headgear which meets or exceeds ASTM (American Society for Testing and Materials)/SEI (Safety Equipment Institute) standards for equestrian use and carries the SEI tag. It must be properly fitted with harness secured. Exception: In Hunter or Jumper classes, adults may be allowed to remove their headgear while accepting prizes and during the playing of the National Anthem only; they must refasten their headgear prior to the lap of honor. It is compulsory for riders in Paso Fino classes, both open and breed restricted including Hunter Hack, where jumping is required and when jumping anywhere on the competition grounds to wear properly fastened protective headgear which meets or exceeds ASTM (American Society for Testing and Materials)/SEI (Safety Equipment Institute) standards for equestrian use and carries the SEI tag. It must be properly fitted with harness secured. A Show Committee, Competition Management, and Licensed Officials must bar riders without protective headgear from entering the ring for classes in which protective headgear is required and may bar any entry or person from entering the ring if not suitably presented to appear before an audience.

**30. DRUG TESTING:** State of California drug testing rules apply. For a copy contact the Show Office.

**31. GOLF CARTS AND BICYCLES:** Minors who do not have a valid driver's license which allows them to operate a motorized vehicle in the state in which they reside will not be permitted to operate a motorized vehicle of any kind, including, but not limited to, golf carts, motorcycles, scooters, or farm utility vehicles, on the competition grounds of licensed competitions. Minors who have a valid temporary license may operate the above described motorized vehicles as long as they are accompanied by an adult with a valid driver's license. The parent/legal guardian or individual who signs the entry blank as a parent or guardian of a minor operating a motorized vehicle in violation of this rule are solely responsible for any damages, claims, losses or actions resulting from that operation. Violations of this rule will be cause for penalties against those responsible for the child committing the offense. Wheelchairs and other mobility assistance devices for individuals with disabilities are exempt from this rule. The unsafe use of personal electronic transport devices, as determined by the competition officials and management in their sole discretion, that do not require a driver's license to operate, including but not limited to segways, hover boards, and single wheeled scooters is prohibited on competition grounds. Operating such devices in areas where people gather may be deemed "unsafe use" if there is a risk of harm to others. If the operator of the device is a minor, the parent/legal guardian or individual who signs the entry blank as a parent or guardian of a minor operating the device in violation of this rule is accountable and may be subject to penalties. Wheelchairs and other mobility assistance devices for individuals with disabilities are exempt from this rule.

**32. PARKING:** Parking allowed in designated areas only. Violators parked in NO PARKING ZONES and FIRE LANES will be issued citations and/or towed from the premises at the owner's expense. There are Handicap parking areas in the Stable Area and public parking lot.

**33. WASHING HORSES:** Nozzles are required on all hoses to help conserve water.

**34. STALL CLEANING:** Please deposit all manure at the ends of the barn aisles and NOT in the middle or in front of the stalls. **If excessive cleanup is required after departure from the show, there will be a \$500 fee charged. Trainers are encouraged to supervise their staff to avoid this fee.**

# RULES, REGULATIONS & GENERAL INFORMATION

**35. TURNOUTS AND LUNGING:** Horses may not be turned-out in arenas at any time. Lunging in designated areas only.

**36. MEDICAL WASTE:** All needles and syringes MUST be deposited in designated disposal containers and not left in stalls or thrown in trash receptacles. Violators will be fined \$75 per needle/syringe. For the first offense the trainer/owner will be notified as well as the appropriate association. The second offense will disqualify the individual and horse and they will be banished from the show with NO REFUND.

**37. POLING:** Poling is prohibited in the State of California. No bamboo or offsets allowed on the Show ground's. Non-compliance will result in elimination from the show.

**38. ORDER OF GO:** There will be a posted order of go in all classes that will be computer generated unless otherwise stated. All jumper classes will run in strict posted order. Any anticipated scheduling conflicts should be brought to the attention of the starters who will advise you on how it will be resolved. Under no circumstances will the Horse Show be interrupted due to a competitor failing to present himself at the gate in a timely manner. Multiple rides must be shown in the correct order. Failure to do so will result in elimination. In hunter classes with double rounds, a posted order will be observed with a rotation of three rounds unless otherwise posted.

**39. AWARDS PRESENTATIONS:** In all classes, an awards presentation will be made. Riders should be present to accept these awards. A suitable horse should be available for classes where it is required to ride for awards. Riders failing to present themselves for awards presentations will forfeit all prize money. Trophy to First Place, Ribbons through eighth place in all classes, except where otherwise noted.

**40. PRIZE MONEY:** Prize money will be deducted from each account at the show. Prize money checks will also be available at the show once the horse has completed showing. NO PRIZE MONEY WILL BE DEDUCTED/PAID/MAILED UNLESS THE OWNER'S OR PAYEE'S SOCIAL SECURITY/TAX ID NUMBER IS LISTED ON THE ENTRY FORM. Any prize money that is to be paid to someone other than the owner listed on the entry blank must be written on the entry blank at the time of entry. Change of payee will not be permitted at the show. The Internal Revenue Service requires 30% of prize money won by foreign exhibitors to be withheld. Foreign exhibitors should apply for a U.S. Social Security number and are required to complete a W-8 Certificate of Foreign Status Form. Unless otherwise stated, prize money will be distributed through 6th place as follows- 30%, 22%, 16%, 12%, 10%, 10%. Management reserves the right to adjust the prize money of any class at any time. No prize money will be paid to classes that are run with fewer than 3 entries. Jumper classics and special classes require a minimum of 6 entries to be held or they will be combined or canceled, and may be run with no prize money and the entry fee will not be adjusted.

**41. CHAMPION AND RESERVE CHAMPION AWARDS:** Champion and Reserve will be awarded in all divisions with 3 classes that fill.

**42. INSURANCE:** All owners and competitors are personally responsible for damages to third parties caused by themselves, their employees, their agents, or their animals. They are therefore strongly advised to take out third-party insurance providing full coverage for participation in equestrian events at home and abroad, and to keep the policy up to date.

**43. FOOD:** Food will be served in the food court.

**44. ATTIRE:** Proper attire is required in all hunter, equitation rings during competition as well as Jumper classes with \$1,000 or more in prize money. Proper Attire is requested for all other jumper classes.

**45. NON-SHOWING HORSES:** Non-Showing horses are not allowed in the show areas.

**46. SUBSTITUTIONS:** Substitution of horses are allowed with the same owner.

**47. NON SMOKING EVENT:** The events included in this prize list are non smoking events in accordance with California State Law SB-977 Tobacco: youth sports events.

**48. MICROCHIP VERIFICATION:** All horses competing in classes that require USHJA horse registration must provide a microchip number that verifies their animal's identity in order to compete for points, money won or be eligible for Federation and/or USHJA programs and awards where horses are required to be recorded or registered. A microchip used to verify identity must be a fifteen-digit ISO compliant 11784/11785 chip and be implanted in the nuchal ligament of the animal. All horses that are competing in classes which require USHJA registration which are not microchipped will be ineligible to compete in Federation licensed competitions, Exceptions: USHJA Outreach and those activities enumerated in GR901.9, items 1-9.

**49. SAFE SPORT VERIFICATION:** As of January 1, 2019 all USEF members 18-years-old and older, with a Competing Membership, must complete SafeSport Training in order to be eligible to participate in USEF activities, including competitions. Please see the USEF website at <https://www.usef.org/compete/resources-forms/rulesregulations/safe-sport> for more information. Those who do not complete the training will be ineligible to participate in USEF activities, including competitions.

## **50. NEAREST HOSPITAL AND LEVEL 1 TRAUMA CENTER:**

**Hospital:** Verdugo Hills Hospital - 1812 Verdugo Blvd, Glendale, CA 91208. 818-790-7100

**Level 1 Trauma Center:** LAC/University of Southern California Medical Center - 1200 N State St, Los Angeles, CA 90033. 323-226-2622

**51. RV RESERVATIONS:** Contact [feed@westpalmsevents.com](mailto:feed@westpalmsevents.com). RV space reservations must be received in advance to guarantee a space.

**52. OFFICE & GROUNDS:** All horses entered in the competition must pay a mandatory office/grounds fee of \$85.00.

**53. FACILITY FEE:** All horses entered in the competition that do not have a show stall in the show stabling area must pay a mandatory fee of \$50.00.





# MAAP

## MINOR ATHLETE ABUSE PREVENTION

### LEARN ABOUT MAAP POLICIES



SafeSport Training



One-On-One Interactions



Local Travel



Social Media and  
Electronic Communications



Read about these and more at  
[usef.org/MAAPP](https://usef.org/MAAPP)

### REPORT MAAP POLICY VIOLATIONS



[usef.org/safe-sport/reporting](https://usef.org/safe-sport/reporting)  
859-225-6915

# 2022 ZONE 10 SPECIFICATIONS CA & NV

**In accordance with GR1111.4: All members may compete for Zone Awards or money in any state contiguous to Zone 10: OR, ID, UT, AZ**

**JUDGING FOR ALL HUNTER SECTIONS:** To be judged on performance and soundness, suitability to count.

**ELIGIBILITY FOR ADULT AMATEURS: HUNTER, JUMPER AND EQUITATION:** To be ridden by exhibitors who have reached their 18th birthday as of December 1 of the current competition year and who hold a current USEF Amateur certification. Open to horses and ponies.

**ELIGIBILITY FOR CHILDREN'S SECTIONS: HUNTER, JUMPER AND EQUITATION:** To be ridden by exhibitors who have not reached their 18th birthday as of December 1 of the current competition year.

**ADULT AMATEUR HUNTER Sections offered and requirements:** Adult Amateurs – may be split into three (3) sections. **Cross Entry:** **Riders:** Riders may not cross enter into any Amateur Owner Hunter (at the same competition), Green Hunter 3'6", Green Hunter 3'9" or High Performance Hunter class at the same competition. Exception - under saddle classes. Adult Amateur Riders may not cross enter into any class at the same competition with fences exceeding 3'3" except Jumper Classes not exceeding 1.25m, Equitation and Medal Classes, and the USHJA National Hunter Derby. An Adult Amateur rider may ride an Amateur Owner Hunter in the A/O Under Saddle Class for an Amateur Owner Hunter rider that has more than one horse entered. No cross entry restrictions at one-day competitions. **Horses:** Horses may not cross enter into any Amateur Owner hunter class (at the same show). No cross entry restrictions at one-day competitions. **Horse and Rider Combination:** No cross entry restrictions at one-day competitions. **Fence Height:** 3'0" with spreads not to exceed the fence height. Courses will not be adjusted for ponies. Combinations are permitted. **Classics:** Three (3) entries are required to conduct a Hunter Classic. **Combining/Dividing Sections:** May be split into three (3) sections: Adult Amateurs 18 – 35; Adult Amateurs 36– 49; Adult Amateurs 50 & Over. If there are fewer than three (3) entries, the Adult Amateur Hunter section may be combined with the Children's Hunter Horse section. **Awards:** Zone Horse of the Year Awards will be presented annually to the following sections: Adult Amateur Hunter 18– 35, Adult Amateur 36– 49, Adult Amateurs 50 & Over.

**LOW ADULT AMATEUR HUNTER Eligibility:** Open to exhibitors who have reached their 18th birthday as of December 1 of the current competition year. **Cross Entry:** **Riders:** Riders may not cross enter into any class or section at the same competition where fences exceed 3'0" **Fence Height:** 2'6" **Combining/Dividing Sections:** If there are fewer than three (3) entries in the Low Adult Amateur Hunter section, it may be combined with the Low Children's Hunter Horse section. The Low Adult Amateur Hunter Horse section may only be combined with the Children's Hunter Pony and Low Children's Hunter Horse sections after those sections have been combined and still do not meet the three (3) entry minimum. **Awards:** Zone Horse of the Year Awards will be presented annually to the following section: Low Adult Amateur Hunter.

**ADULT AMATEUR JUMPER Sections offered and requirements:** Low Adult Amateur Jumper; High Adult Amateur Jumper. **Cross Entry:** No

cross entry restrictions at one day competitions. **Rider:** Adult Amateur Jumper riders may not cross enter into any jumper class with fences exceeding 1.25m. **Horse/Pony:** n/a. **Horse and Rider Combination:** n/a. **Fence Height:** Low Adult Amateur Jumper 1.00m to 1.05m. High Adult Amateur Jumper 1.10m for the first class of the section. In all other classes of the section fences to be set no lower than 1.10m and no higher than 1.15m. **Combining/Dividing Sections:** Low Children's and Low Adult Amateur Jumper sections must combine if there are less than three (3) in either section and may combine if there are less than six (6) in either section. If after combining the Low sections there are less than three (3) entries then competition management must further combine the Low sections with the High sections, allowing each section to compete at their respective height. High Children's and High Adult Amateur Jumper sections must combine if there are less than three (3) in either section and may combine if there are less than six (6) in either section. If after combining the High sections there are less than three (3) entries then competition management must further combine the High sections with the Low sections, allowing each section to compete at their respective height. **Awards:** Zone Horse of the Year Awards will be presented annually to the following sections: Low Adult Amateur Jumper; High Adult Amateur Jumper.

**AGE GROUP EQUITATION: ADULT SECTION** Refer to GR1131. **Fence Height:** Fence heights cannot exceed 3'5" and wings are optional. To be shown over a course of not less than eight fences. **Combining/Dividing Sections:** Competition management may offer Age Group Equitation classes divided at their discretion. Equitation that is offered by age will be awarded points that will be credited to the age groups defined in GR1131 or the relevant Zone Specifications. **Awards:** Zone Horse of the Year Awards will be presented annually to the following sections: Equitation 18-35; Equitation 36 and Over.

**CHILDREN'S HUNTER HORSE Sections offered and requirements:** Children's Hunter Horse. **Cross Entry:** **Rider:** Riders may not cross enter into any Junior Hunter, Green Hunter 3'6", Green Hunter 3'9" or High Performance Hunter class at the same show. Exception - under saddle classes. Children's riders may not cross enter into any class at the same competition with fences exceeding 3'3" (exception: Jumper Classes not exceeding 1.25m, Equitation and Medal Classes, and the USHJA National Hunter Derby). A Children's Hunter rider may ride a Junior Hunter in the Junior Hunter Under Saddle class for a Junior Hunter rider that has more than one horse entered. No cross entry restrictions at one-day competitions. **Horses/Ponies:** Horses may not cross enter into any 3'6" Junior Hunter Class at the same competition. No cross entry restrictions at one-day competition. **Horse and rider combination:** No cross entry restrictions at one-day competitions. **Classics:** Three (3) entries are required to conduct a Hunter Classic. **Fence Height:** Horses 3'0" with spreads not to exceed fence height. Combinations are permitted. Distances will not be adjusted for ponies. **Combining/Dividing Sections:** If there are fewer than three (3) entries, the Children's Hunter section may be combined with the Adult Amateur Hunter section. **Awards:** Zone Horse of the Year Awards will be presented annually to the following sections: Children's Hunter Horse.

**LOW CHILDREN'S HUNTER HORSE Eligibility:** Open to exhibitors who have not yet reached their 18th birthday as of December 1 of the current competition year. **Cross Entry:** **Riders:** Riders may not cross enter at the same competition into any class/section where fences exceed 3'0" **Fence Height:** 2'6" **Combining/Dividing**

# 2022 ZONE 10 SPECIFICATIONS CA & NV

**Sections:** If there are fewer than three (3) horses entered in the Low Children's Hunter Horse section, then they may be combined and judged with the Children's Hunter Ponies or the Low Adult Amateur Hunter section. If there are still fewer than three (3) entries after the Children's Hunter Pony section has been combined with the Low Children's Hunter Horse section, these sections may only then combine with the Low Adult Amateur Hunter Horse section. **Awards:** Zone Horse of the Year Awards will be presented annually to the following section: Low Children's Hunter Horse.

**CHILDREN'S HUNTER PONY Sections offered and requirements:** Small/Medium Children's Pony; Large Children's Pony. **Cross Entry:** **Rider:** Rider may not cross enter in any division where the fences exceed 3'3" (exception: Children's Jumper sections). **Horse/Pony:** n/a. **Horse and Rider Combination:** n/a. **Fence Height:** Small/Medium Ponies: 2'0"; spreads not to exceed height of fence. Large Ponies: 2'6"; spreads not to exceed height of fence. Combinations are not permitted. **Combining/Dividing Sections:** If there are fewer than three (3) ponies in the Children's Hunter Small/Medium Pony or Children's Hunter Large Pony, then the classes may be combined and judged together. If there are still fewer than three (3) ponies after the Small/Medium and Large sections have been combined, the Children's Hunter Pony sections may combine with the Low Children's Hunter Horse section. If there are still fewer than three (3) entries after the Children's Hunter Small/Medium and Large Pony sections have been combined with the Low Children's Hunter Horse section, these sections may only then combine with the Low Adult Amateur Hunter Horse section. **Awards:** Zone Horse of the Year Awards will be presented annually to the following sections: Children's Hunter Pony.

**CHILDREN'S JUMPER Sections offered and Requirements:** Low Children's Jumper; High Children's Jumper. **Cross Entry:** No cross

entry restrictions at one day competitions. **Rider:** Children's Jumper riders may not cross enter into any jumper class with fences exceeding 1.25m. **Horse/Pony:** n/a. **Horse and Rider Combination:** n/a. **Fence Height:** Low Children's Jumper 1.00m to 1.05m. High Children's Jumper 1.10m for the first class of the section. In all other classes of the section fences to be set no lower than 1.10m and no higher than 1.15m. **Combining/Dividing Sections:** Low Children's and Low Adult Amateur Jumper sections must combine if there are less than three (3) in either section and may combine if there are less than six (6) in either section. If after combining the Low sections there are less than three (3) entries then competition management must further combine the Low sections with the High sections, allowing each section to compete at their respective height. High Children's and High Adult Amateur Jumper sections must combine if there are less than three (3) in either section and may combine if there are less than six (6) in either section. If after combining the High sections there are less than three (3) entries then competition management must further combine the High sections with the Low sections, allowing each section to compete at their respective height. **Awards:** Zone Horse of the Year Awards will be presented annually to the following sections: Low Children's Jumper section; High Children's Jumper section.

**AGE GROUP EQUITATION: CHILDREN'S/JUNIOR SECTION** Refer to GR1131. **Fence Height:** Fence heights cannot exceed 3'5" and wings are optional. To be shown over a course of not less than eight fences. **Combining/Dividing Sections:** Competition management may offer Age Group Equitation classes divided at their discretion. Equitation that is offered by age will be awarded points that will be credited to the age groups defined in GR1131 or the relevant Zone Specifications. **Awards:** Zone Horse of the Year Awards will be presented annually to the following sections: Equitation 14 and Under; Equitation 15-17.



# Join Us!

 /westpalmsevents

 /WestPalmsEvents

Get all the latest news and updates, event information, photos, show results, and more on social media!

  
WEST PALMS  
EVENT MANAGEMENT

[www.westpalmsevents.com](http://www.westpalmsevents.com)

PHOTOS: KRISTIN LEE PHOTOGRAPHY, ALDEN CORRIGAN MEDIA, GRAND PIX PHOTOGRAPHY, MCCOOL PHOTOGRAPHY



Vegetarian, Glycerin-free, Petroleum-free, pH Matched Premium Leather Care

## It's not about the ribbons you win. It's about how well you cared for your horse along the way.

Top ranking riders realize that caring for your leather is as important to your horse as buckling on your helmet for every ride is to you. Imagine how good your horse feels when tack maintained with Sterling Essentials touches his delicate skin. You can see how he appreciates the gentle, safe ingredients and your thoughtfulness, can you not?

His health is up to you. Take the reins to improve the health and wellness of your horse, your tack, and yourself by using Sterling Essentials, the premier all natural leather care brand for equestrians around the world.



**"A superior quality cleaner, simply amazing!"**

Genevieve Munson - USEF Top Ranking Junior  
Jumper Rider, USHJA Individual Junior Jumper Gold  
Medalist, NAYC Team Silver Medalist

Photo Credit  
Genevieve Munson

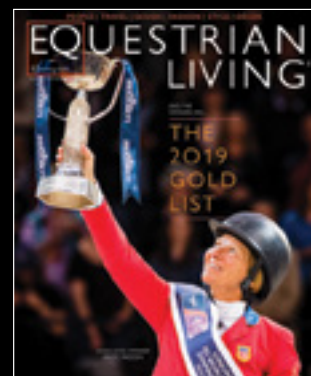
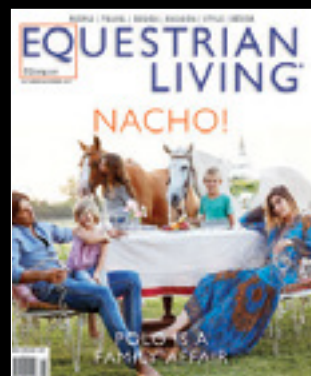
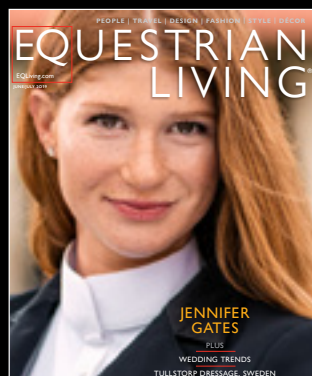
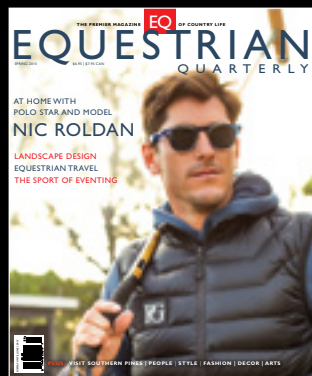
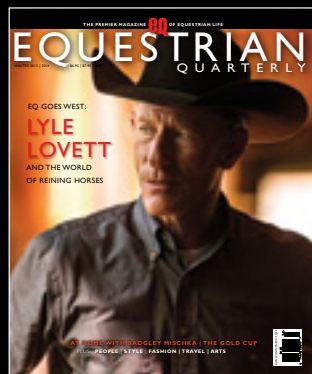


**STERLING  
ESSENTIALS**  
— LLC —  
EMPOWERED EQUESTRIAN

Purchase your favorite fragrance at retailers nationwide or  
learn more at:

[WWW.STERLING-ESSENTIALS.COM](http://WWW.STERLING-ESSENTIALS.COM)





Don't miss a single issue!

[WWW.EQLIVING.COM/SUBSCRIBE](http://WWW.EQLIVING.COM/SUBSCRIBE)

**READ EQ FREE ONLINE**  
[eqliving.com/category/newsstand](http://eqliving.com/category/newsstand)

**BUY COLLECTOR EDITIONS**  
[eqliving.com/pastissues](http://eqliving.com/pastissues)

**ADVERTISE**  
[eqliving.com/advertise](http://eqliving.com/advertise)

Facebook: EquestrianLivingMagazine | Instagram @eqliving | Twitter @eqliving

# W

# WEST PALMS

EVENT MANAGEMENT

PO Box 1092 | Camarillo, CA 93011

---

 /westpalmsevents

 /WestPalmsEvents

WWW.WESTPALMSEVENTS.COM